



**ELECTRONIC COPY**

**LABORATORY GROWN DIAMOND REPORT**

July 2, 2022  
 IGI Report Number **LG536292390**  
 Description **LABORATORY GROWN  
DIAMOND**  
 Shape and Cutting Style **OVAL BRILLIANT**  
 Measurements **10.70 X 7.42 X 4.66 MM**

**GRADING RESULTS**

Carat Weight **2.28 CARATS**  
 Color Grade **E**  
 Clarity Grade **VS 1**

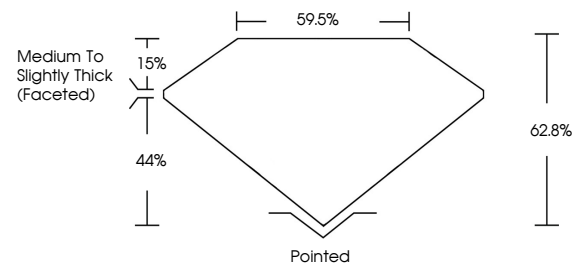
**ADDITIONAL GRADING INFORMATION**

Polish **EXCELLENT**  
 Symmetry **EXCELLENT**  
 Fluorescence **NONE**

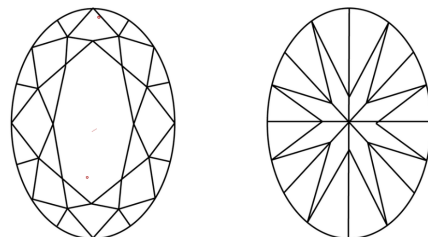
Inscription(s) **LABGROWN IGI LG536292390**  
 Comments: This Laboratory Grown Diamond was created by Chemical Vapor Deposition (CVD) growth process and may include post-growth treatment. Type IIa

**LG536292390**

**PROPORTIONS**



**CLARITY CHARACTERISTICS**

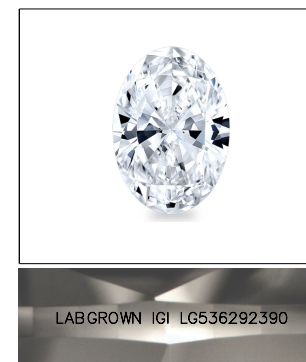


**KEY TO SYMBOLS**

Red symbols indicate internal characteristics.  
 Green symbols indicate external characteristics.

**GRADING SCALES**

| COLOR GRADING SCALE         | CL                           | NC                 | FT                          | VL                     | LT                |          |
|-----------------------------|------------------------------|--------------------|-----------------------------|------------------------|-------------------|----------|
|                             | COLORLESS D-F                | NEAR COLORLESS G-J | FAINT K-M                   | VERY LIGHT N-R         | LIGHT S-Z         |          |
| CLARITY (10x) GRADING SCALE | FL                           | IF                 | VVS                         | VS                     | SI                | I        |
|                             | FLAWLESS INTERNALLY FLAWLESS | INTERNAL FLAWLESS  | VERY VERY SLIGHTLY INCLUDED | VERY SLIGHTLY INCLUDED | SLIGHTLY INCLUDED | INCLUDED |

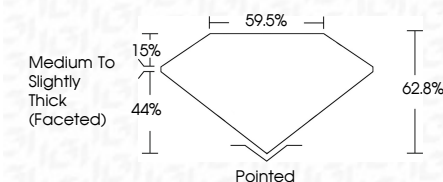


LABGROWN IGI LG536292390

**LASERSCRIBE<sup>SM</sup>**

Sample Image Used

July 2, 2022  
 IGI Report Number **LG536292390**  
 Description **LABORATORY GROWN  
DIAMOND**  
 Shape and Cutting Style **OVAL BRILLIANT**  
 Measurements **10.70 X 7.42 X 4.66 MM**  
**GRADING RESULTS**  
 Carat Weight **2.28 CARATS**  
 Color Grade **E**  
 Clarity Grade **VS 1**



**ADDITIONAL GRADING INFORMATION**

Polish **EXCELLENT**  
 Symmetry **EXCELLENT**  
 Fluorescence **NONE**  
 Inscription(s) **LABGROWN IGI LG536292390**

Comments: This Laboratory Grown Diamond was created by Chemical Vapor Deposition (CVD) growth process and may include post-growth treatment. Type IIa



**IGI**

July 2, 2022  
 IGI Report No **LG536292390**  
**OVAL BRILLIANT**  
 Carat Weight **2.28 CARATS**  
 Color Grade **E**  
 Clarity Grade **VS 1**  
 Depth **62.8%**  
 Table **15%**  
 Girdle **Medium To Slightly Thick (Faceted)**  
 Culet **Pointed**  
 Polish **EXCELLENT**  
 Symmetry **EXCELLENT**  
 Fluorescence **NONE**  
 Inscription(s) **LABGROWN IGI LG536292390**  
 Comments:

This Laboratory Grown Diamond was created by Chemical Vapor Deposition (CVD) growth process and may include post-growth treatment. Type IIa

