

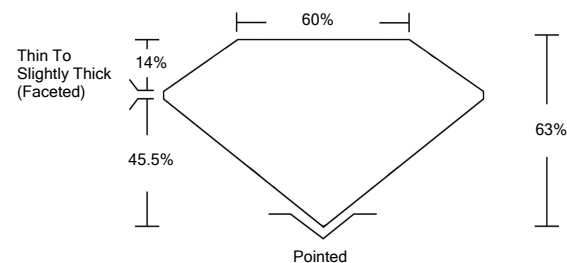


ELECTRONIC COPY

LABORATORY GROWN DIAMOND REPORT

LG532263950

PROPORTIONS



GRADING SCALES

COLOR GRADING SCALE	CL	NC	FT	VL	LT	
	COLORLESS D-F	NEAR COLORLESS G-J	FAINT K-M	VERY LIGHT N-R	LIGHT S-Z	
CLARITY (10x) GRADING SCALE	FL	IF	VVS	VS	SI	I
	FLAWLESS INTERNALLY FLAWLESS	VERY VERY SLIGHTLY INCLUDED	VERY SLIGHTLY INCLUDED	SLIGHTLY INCLUDED	INCLUDED	

June 6, 2022

IGI Report Number

LG532263950

Description

**LABORATORY GROWN
DIAMOND**

Shape and Cutting Style

OVAL BRILLIANT

Measurements

11.64 X 8.28 X 5.22 MM

GRADING RESULTS

Carat Weight

3.09 CARATS

Color Grade

G

Clarity Grade

SI 1

June 6, 2022

IGI Report Number

LG532263950

Description

**LABORATORY GROWN
DIAMOND**

Shape and Cutting Style

OVAL BRILLIANT

Measurements

11.64 X 8.28 X 5.22 MM

GRADING RESULTS

Carat Weight

3.09 CARATS

Color Grade

G

Clarity Grade

SI 1

ADDITIONAL GRADING INFORMATION

Polish

EXCELLENT

Symmetry

EXCELLENT

Fluorescence

NONE

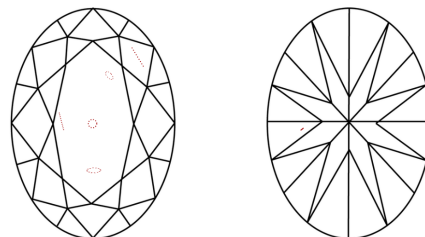
Inscription(s)

LABGROWN IGI LG532263950

Comments: This Laboratory Grown Diamond was created by Chemical Vapor Deposition (CVD) growth process and may include post-growth treatment.

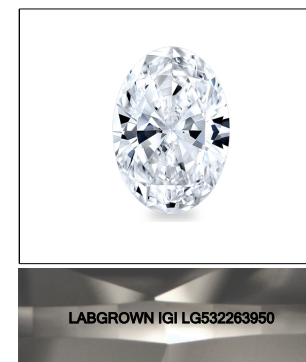
Type IIa

CLARITY CHARACTERISTICS



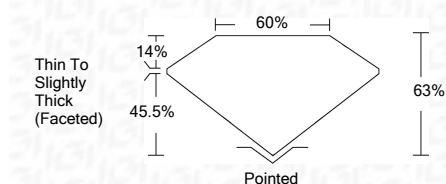
KEY TO SYMBOLS

Red symbols indicate internal characteristics.
Green symbols indicate external characteristics.



LASERSCRIBESM

Sample Image Used



ADDITIONAL GRADING INFORMATION

Polish

EXCELLENT

Symmetry

EXCELLENT

Fluorescence

NONE

Inscription(s)

LABGROWN IGI LG532263950

Comments: This Laboratory Grown Diamond was created by Chemical Vapor Deposition (CVD) growth process and may include post-growth treatment.

Type IIa



IGI

IGI Report No. LG532263950	3.09 CARATS	G	SI 1	63%	60%	Pointed
OVAL BRILLIANT	11.64 X 8.28 X 5.22 MM					EXCELLENT
Carat Weight						EXCELLENT
Color Grade						NONE
Clarity Grade						LABGROWN IGI LG532263950
Depth						
Table						
Girdle						
Culet						
Polish						
Symmetry						
Fluorescence						
Inscription(s)						
Comments:	This Laboratory Grown Diamond was created by Chemical Vapor Deposition (CVD) growth process and may include post-growth treatment. Type IIa					