

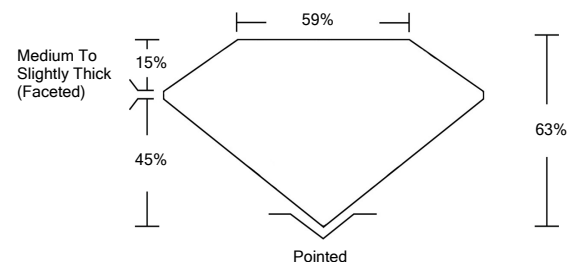


ELECTRONIC COPY

LABORATORY GROWN DIAMOND REPORT

LG532262284

PROPORTIONS



GRADING SCALES

COLOR GRADING SCALE	CL	NC	FT	VL	LT	
	COLORLESS D-F	NEAR COLORLESS G-J	FAINT K-M	VERY LIGHT N-R	LIGHT S-Z	
CLARITY (10x) GRADING SCALE	FL	IF	VVS	VS	SI	I
	FLAWLESS INTERNALLY FLAWLESS	VERY VERY SLIGHTLY INCLUDED	VERY SLIGHTLY INCLUDED	SLIGHTLY INCLUDED	INCLUDED	

June 4, 2022

IGI Report Number

LG532262284

Description

**LABORATORY GROWN
DIAMOND**

Shape and Cutting Style

OVAL BRILLIANT

Measurements

11.56 X 8.21 X 5.17 MM

GRADING RESULTS

Carat Weight

3.02 CARATS

Color Grade

G

Clarity Grade

VS 1

June 4, 2022

IGI Report Number

LG532262284

Description

**LABORATORY GROWN
DIAMOND**

Shape and Cutting Style

OVAL BRILLIANT

Measurements

11.56 X 8.21 X 5.17 MM

GRADING RESULTS

Carat Weight

3.02 CARATS

Color Grade

G

Clarity Grade

VS 1

ADDITIONAL GRADING INFORMATION

Polish

EXCELLENT

Symmetry

EXCELLENT

Fluorescence

NONE

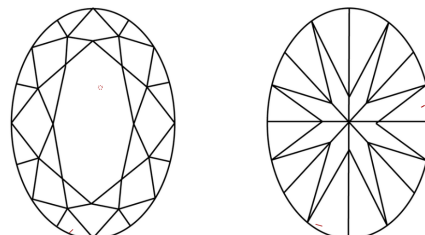
Inscription(s)

LABGROWN IGI LG532262284

Comments: This Laboratory Grown Diamond was created by Chemical Vapor Deposition (CVD) growth process and may include post-growth treatment.

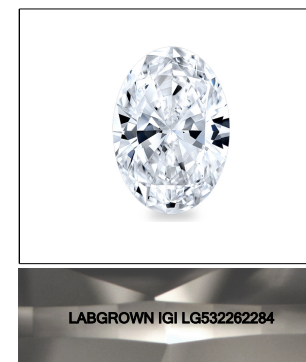
Type IIa

CLARITY CHARACTERISTICS



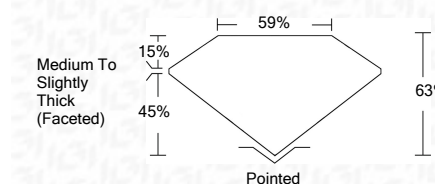
KEY TO SYMBOLS

Red symbols indicate internal characteristics.
Green symbols indicate external characteristics.



LASERSCRIBESM

Sample Image Used



ADDITIONAL GRADING INFORMATION

Polish

EXCELLENT

Symmetry

EXCELLENT

Fluorescence

NONE

Inscription(s)

LABGROWN IGI LG532262284

Comments: This Laboratory Grown Diamond was created by Chemical Vapor Deposition (CVD) growth process and may include post-growth treatment.

Type IIa



IGI

IGI Report No. LG532262284	3.02 CARATS	G	VS 1	63%	59%	Medium To Slightly Thick (Faceted)	Pointed
OVAL BRILLIANT	11.56 X 8.21 X 5.17 MM						
Carat Weight							
Color Grade							
Clarity Grade							
Depth							
Table							
Girdle							
Culet							
Polish							
Symmetry							
Fluorescence							
Inscription(s)							
Comments:							

This Laboratory Grown Diamond was created by Chemical Vapor Deposition (CVD) growth process and may include post-growth treatment.
Type IIa