



**INTERNATIONAL
GEMOLOGICAL
INSTITUTE**

LABORATORY GROWN DIAMOND REPORT

IGI LABORATORY GROWN DIAMOND IDENTIFICATION REPORT

June 3, 2022
 IGI Report Number LG532259595
 Description LABORATORY GROWN DIAMOND
 Shape and Cutting Style PEAR BRILLIANT
 Measurements 8.42 X 5.22 X 3.24 MM

GRADING RESULTS

Carat Weight 0.80 CARAT
 Color Grade E
 Clarity Grade VS 1

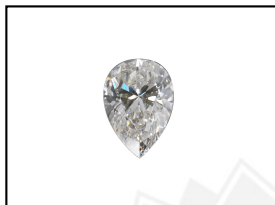
ADDITIONAL GRADING INFORMATION

Polish EXCELLENT
 Symmetry EXCELLENT
 Fluorescence NONE
 Inscription(s) LABGROWN IGI LG532259595

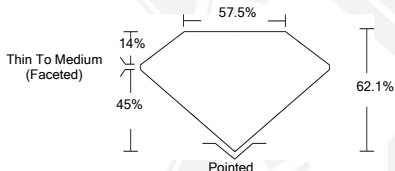
Comments: This Laboratory Grown Diamond was created by Chemical Vapor Deposition (CVD) growth process and may include post-growth treatment. Type IIa

**ELECTRONIC COPY LABORATORY GROWN
DIAMOND REPORT**

LG532259595



LASERSCRIBESM
Sample Images Used



**IGI LABORATORY GROWN
DIAMOND ID REPORT**

June 3, 2022
 IGI Report Number **LG532259595**
PEAR BRILLIANT
8.42 X 5.22 X 3.24 MM
 Carat Weight 0.80 CARAT
 Color Grade E
 Clarity Grade VS 1
 Polish EXCELLENT
 Symmetry EXCELLENT
 Fluorescence NONE
 Inscription(s) LABGROWN IGI
 LG532259595

Comments: This Laboratory Grown Diamond was created by Chemical Vapor Deposition (CVD) growth process and may include post-growth treatment. Type IIa

**IGI LABORATORY GROWN
DIAMOND ID REPORT**

June 3, 2022
 IGI Report Number **LG532259595**
PEAR BRILLIANT
8.42 X 5.22 X 3.24 MM
 Carat Weight 0.80 CARAT
 Color Grade E
 Clarity Grade VS 1
 Polish EXCELLENT
 Symmetry EXCELLENT
 Fluorescence NONE
 Inscription(s) LABGROWN IGI
 LG532259595

Comments: This Laboratory Grown Diamond was created by Chemical Vapor Deposition (CVD) growth process and may include post-growth treatment. Type IIa

THIS DOCUMENT WAS PRODUCED WITH THE FOLLOWING SECURITY MEASURES: SPECIAL DOCUMENT PAPER, INK SCREENS, WATERMARK, BACKGROUND DESIGN, HOLOGRAM AND OTHER SECURITY FEATURES NOT LISTED AND DO EXCEED DOCUMENT SECURITY INDUSTRY GUIDELINES.

For terms & conditions and to verify this report, please visit www.igi.org