



ELECTRONIC COPY

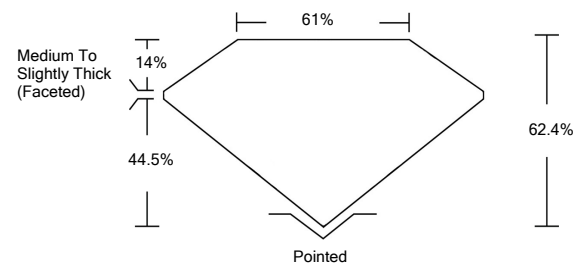
LABORATORY GROWN DIAMOND REPORT

LG532258331

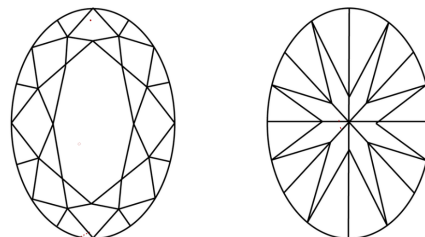
GRADING SCALES

COLOR GRADING SCALE	CL	NC	FT	VL	LT	
	COLORLESS D-F	NEAR COLORLESS G-J	FAINT K-M	VERY LIGHT N-R	LIGHT S-Z	
CLARITY (10x) GRADING SCALE	FL	IF	VVS	VS	SI	I
	FLAWLESS INTERNALLY FLAWLESS	VERY VERY SLIGHTLY INCLUDED	VERY SLIGHTLY INCLUDED	SLIGHTLY INCLUDED	INCLUDED	

PROPORTIONS

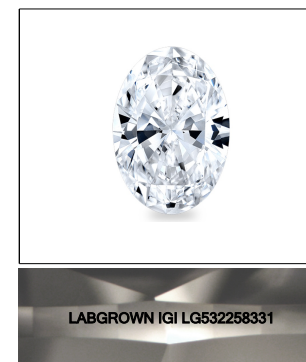


CLARITY CHARACTERISTICS



KEY TO SYMBOLS

Red symbols indicate internal characteristics.
Green symbols indicate external characteristics.



LASERSCRIBESM
Sample Image Used

June 4, 2022

IGI Report Number **LG532258331**

Description **LABORATORY GROWN DIAMOND**

Shape and Cutting Style **OVAL BRILLIANT**

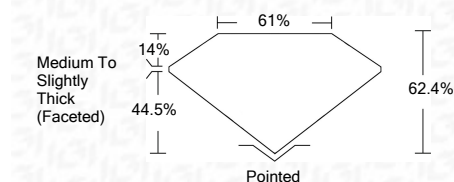
Measurements **10.50 X 7.27 X 4.54 MM**

GRADING RESULTS

Carat Weight **2.15 CARATS**

Color Grade **F**

Clarity Grade **VS 1**



ADDITIONAL GRADING INFORMATION

Polish **EXCELLENT**

Symmetry **EXCELLENT**

Fluorescence **NONE**

Inscription(s) **LABGROWN IGI LG532258331**

Comments: This Laboratory Grown Diamond was created by Chemical Vapor Deposition (CVD) growth process and may include post-growth treatment.
Type IIa

June 4, 2022

IGI Report Number **LG532258331**

Description **LABORATORY GROWN DIAMOND**

Shape and Cutting Style **OVAL BRILLIANT**

Measurements **10.50 X 7.27 X 4.54 MM**

GRADING RESULTS

Carat Weight **2.15 CARATS**

Color Grade **F**

Clarity Grade **VS 1**

ADDITIONAL GRADING INFORMATION

Polish **EXCELLENT**

Symmetry **EXCELLENT**

Fluorescence **NONE**

Inscription(s) **LABGROWN IGI LG532258331**

Comments: This Laboratory Grown Diamond was created by Chemical Vapor Deposition (CVD) growth process and may include post-growth treatment.
Type IIa



IGI Report No. LG532258331	2.15 CARATS	F	VS 1	62.4%	61%	Pointed	EXCELLENT	EXCELLENT	NONE	LABGROWN IGI LG532258331
IGI Report No. LG532258331	10.50 X 7.27 X 4.54 MM	2.15 CARATS	VS 1	62.4%	61%	Pointed	EXCELLENT	EXCELLENT	NONE	LABGROWN IGI LG532258331
IGI Report No. LG532258331	10.50 X 7.27 X 4.54 MM	2.15 CARATS	VS 1	62.4%	61%	Pointed	EXCELLENT	EXCELLENT	NONE	LABGROWN IGI LG532258331
IGI Report No. LG532258331	10.50 X 7.27 X 4.54 MM	2.15 CARATS	VS 1	62.4%	61%	Pointed	EXCELLENT	EXCELLENT	NONE	LABGROWN IGI LG532258331

This Laboratory Grown Diamond was created by Chemical Vapor Deposition (CVD) growth process and may include post-growth treatment.
Type IIa