

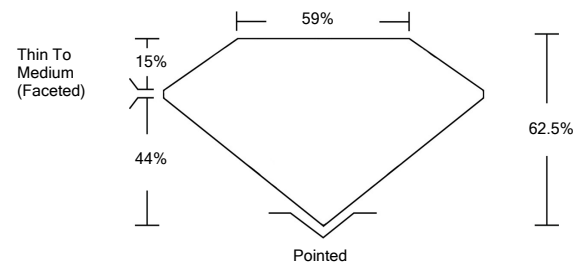


**ELECTRONIC COPY**

**LABORATORY GROWN DIAMOND REPORT**

LG530210631

**PROPORTIONS**



**GRADING SCALES**

COLOR GRADING SCALE	CL	NC	FT	VL	LT	
	COLORLESS D-F	NEAR COLORLESS G-J	FAINT K-M	VERY LIGHT N-R	LIGHT S-Z	
CLARITY (10x) GRADING SCALE	FL	IF	VVS	VS	SI	I
	FLAWLESS INTERNALLY FLAWLESS	VERY VERY SLIGHTLY INCLUDED	VERY SLIGHTLY INCLUDED	SLIGHTLY INCLUDED	INCLUDED	

May 28, 2022  
 IGI Report Number **LG530210631**  
 Description **LABORATORY GROWN DIAMOND**  
 Shape and Cutting Style **OVAL BRILLIANT**  
 Measurements **13.20 X 9.14 X 5.71 MM**

May 28, 2022  
 IGI Report Number **LG530210631**  
 Description **LABORATORY GROWN DIAMOND**  
 Shape and Cutting Style **OVAL BRILLIANT**  
 Measurements **13.20 X 9.14 X 5.71 MM**

**GRADING RESULTS**

Carat Weight **4.22 CARATS**  
 Color Grade **F**  
 Clarity Grade **VS 1**

**GRADING RESULTS**  
 Carat Weight **4.22 CARATS**  
 Color Grade **F**  
 Clarity Grade **VS 1**

**ADDITIONAL GRADING INFORMATION**

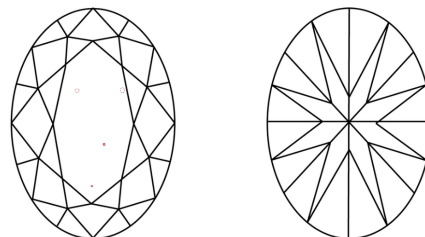
Polish **EXCELLENT**  
 Symmetry **EXCELLENT**  
 Fluorescence **NONE**  
 Inscription(s) **LABGROWN IGI LG530210631**

**ADDITIONAL GRADING INFORMATION**  
 Polish **EXCELLENT**  
 Symmetry **EXCELLENT**  
 Fluorescence **NONE**  
 Inscription(s) **LABGROWN IGI LG530210631**

Comments: This Laboratory Grown Diamond was created by Chemical Vapor Deposition (CVD) growth process and may include post-growth treatment.  
 Type IIa

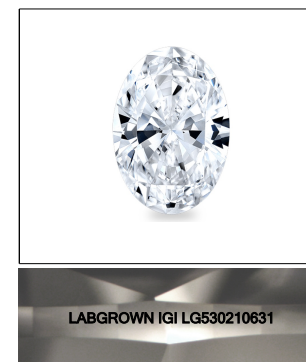
Comments: This Laboratory Grown Diamond was created by Chemical Vapor Deposition (CVD) growth process and may include post-growth treatment.  
 Type IIa

**CLARITY CHARACTERISTICS**

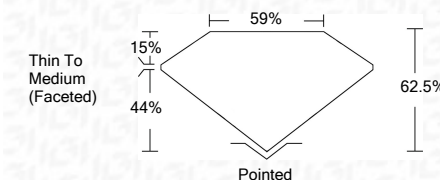


**KEY TO SYMBOLS**

Red symbols indicate internal characteristics.  
 Green symbols indicate external characteristics.



**LASERSCRIBE<sup>SM</sup>**  
 Sample Image Used



**IGI**

May 28, 2022  
 IGI Report No. **LG530210631**  
**OVAL BRILLIANT**  
 13.20 X 9.14 X 5.71 MM  
 Carat Weight **4.22 CARATS**  
 Color Grade **F**  
 Clarity Grade **VS 1**  
 Depth **62.5%**  
 Table **59%**  
 Girdle **Thin To Medium (Faceted)**  
 Culet **Pointed**  
 Polish **EXCELLENT**  
 Symmetry **EXCELLENT**  
 Fluorescence **NONE**  
 Inscription(s) **LABGROWN IGI LG530210631**  
 Comments: **This Laboratory Grown Diamond was created by Chemical Vapor Deposition (CVD) growth process and may include post-growth treatment. Type IIa**