



ELECTRONIC COPY

LABORATORY GROWN DIAMOND REPORT

May 24, 2022
 IGI Report Number **LG529281767**
 Description **LABORATORY GROWN
DIAMOND**
 Shape and Cutting Style **PEAR BRILLIANT**
 Measurements **9.93 X 6.03 X 3.63 MM**

GRADING RESULTS

Carat Weight **1.24 CARAT**
 Color Grade **F**
 Clarity Grade **VS 1**

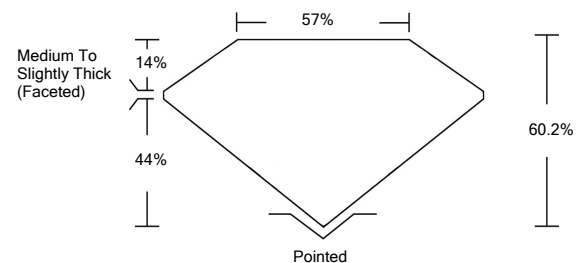
ADDITIONAL GRADING INFORMATION

Polish **EXCELLENT**
 Symmetry **VERY GOOD**
 Fluorescence **NONE**
 Inscription(s) **LABGROWN IGI LG529281767**

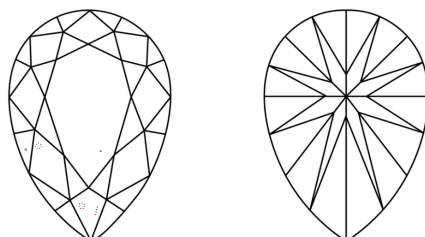
Comments: This Laboratory Grown Diamond was created by Chemical Vapor Deposition (CVD) growth process and may include post-growth treatment.
 Type IIa

LG529281767

PROPORTIONS



CLARITY CHARACTERISTICS

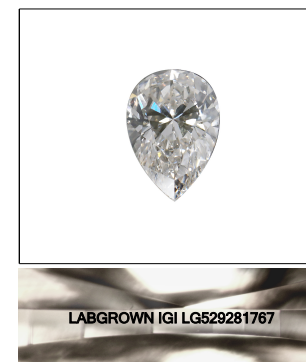


KEY TO SYMBOLS

Red symbols indicate internal characteristics.
 Green symbols indicate external characteristics.

GRADING SCALES

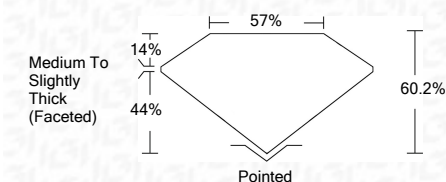
COLOR GRADING SCALE	CL	NC	FT	VLT	LT	
	COLORLESS D-F	NEAR COLORLESS G-J	FAINT K-M	VERY LIGHT N-R	LIGHT S-Z	
CLARITY (10x) GRADING SCALE	FL	IF	VVS	VS	SI	I
	FLAWLESS INTERNALLY FLAWLESS	VERY VERY SLIGHTLY INCLUDED	VERY SLIGHTLY INCLUDED	SLIGHTLY INCLUDED	INCLUDED	



LASERSCRIBESM

Sample Image Used

May 24, 2022
 IGI Report Number **LG529281767**
 Description **LABORATORY GROWN
DIAMOND**
 Shape and Cutting Style **PEAR BRILLIANT**
 Measurements **9.93 X 6.03 X 3.63 MM**
GRADING RESULTS
 Carat Weight **1.24 CARAT**
 Color Grade **F**
 Clarity Grade **VS 1**



ADDITIONAL GRADING INFORMATION

Polish **EXCELLENT**
 Symmetry **VERY GOOD**
 Fluorescence **NONE**
 Inscription(s) **LABGROWN IGI LG529281767**

Comments: This Laboratory Grown Diamond was created by Chemical Vapor Deposition (CVD) growth process and may include post-growth treatment.
 Type IIa



May 24, 2022
 IGI Report No. **LG529281767**
PEAR BRILLIANT
9.93 X 6.03 X 3.63 MM
 Carat Weight
 Color Grade **F**
 Clarity Grade **VS 1**
 Depth **60.2%**
 Table **57%**
 Girdle **Medium To Slightly Thick (Faceted)**
 Culet **Pointed**
 Polish **EXCELLENT**
 Symmetry **VERY GOOD**
 Fluorescence **NONE**
 Inscription(s) **LABGROWN IGI LG529281767**
 Comments:
 This Laboratory Grown Diamond was created by Chemical Vapor Deposition (CVD) growth process and may include post-growth treatment.
 Type IIa