



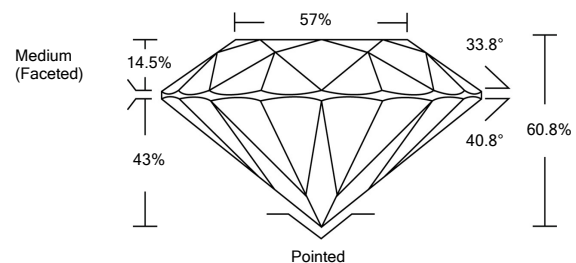
ELECTRONIC COPY

LG529264885

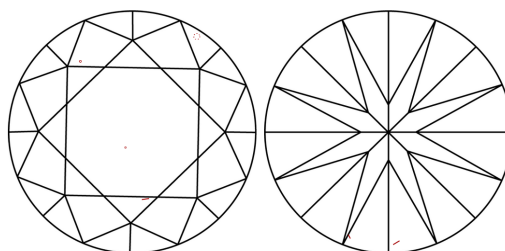
GRADING SCALES

COLOR GRADING SCALE	CL	NC	FT	VLT	LT	
	COLORLESS D-F	NEAR COLORLESS G-J	FAINT K-M	VERY LIGHT N-R	LIGHT S-Z	
CLARITY (10x) GRADING SCALE	FL	IF	VVS	VS	SI	I
	FLAWLESS INTERNALLY FLAWLESS	VERY VERY SLIGHTLY INCLUDED	VERY SLIGHTLY INCLUDED	SLIGHTLY INCLUDED	INCLUDED	

PROPORTIONS

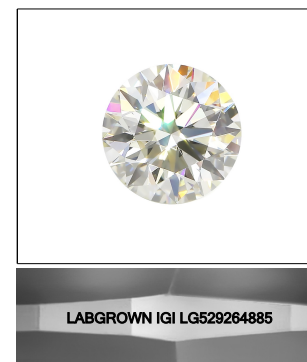


CLARITY CHARACTERISTICS



KEY TO SYMBOLS

Red symbols indicate internal characteristics. Green symbols indicate external characteristics.



LASERSCRIBESM Sample Image Used

May 20, 2022

IGI Report Number **LG529264885**

Description **LABORATORY GROWN DIAMOND**

Shape and Cutting Style **ROUND BRILLIANT**

Measurements **11.32 - 11.35 X 6.89 MM**

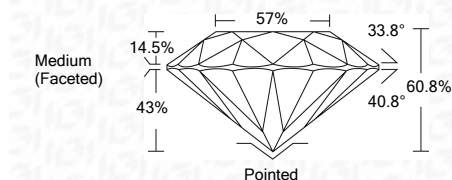
GRADING RESULTS

Carat Weight **5.39 CARATS**

Color Grade **F**

Clarity Grade **VS 1**

Cut Grade **IDEAL**



ADDITIONAL GRADING INFORMATION

Polish **EXCELLENT**

Symmetry **EXCELLENT**

Fluorescence **NONE**

Inscription(s) **LABGROWN IGI LG529264885**

Comments: This Laboratory Grown Diamond was created by Chemical Vapor Deposition (CVD) growth process and may include post-growth treatment. Type IIa



IGI Report No. LG529264885	ROUND BRILLIANT	5.39 CARATS	F
11.32 - 11.35 X 6.89 MM	IDEAL	VS 1	VS 1
Carat Weight	60.8%	40.8%	57%
Color Grade	Medium (Faceted)		
Clarity Grade	Pointed		
Cut Grade	EXCELLENT		
Depth	EXCELLENT		
Table	NONE		
Girdle	LABGROWN IGI Laserscribe		
Culet			
Polish			
Symmetry			
Fluorescence			
Inscription(s)			

Comments: This Laboratory Grown Diamond was created by Chemical Vapor Deposition (CVD) growth process and may include post-growth treatment. Type IIa

