

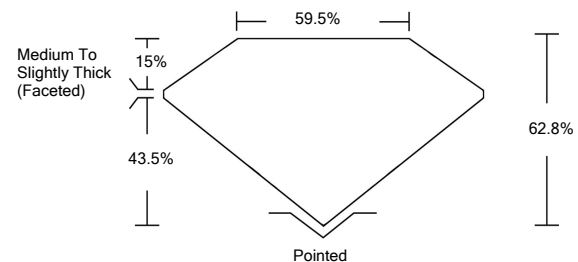


ELECTRONIC COPY

LABORATORY GROWN DIAMOND REPORT

LG529261488

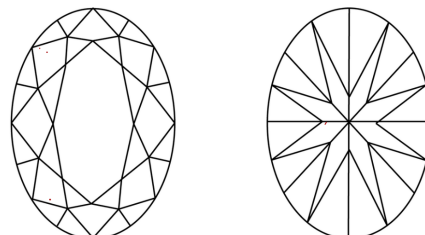
PROPORTIONS



GRADING SCALES

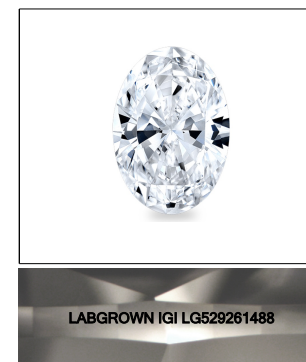
COLOR GRADING SCALE	CL	NC	FT	VL	LT	
	COLORLESS D-F	NEAR COLORLESS G-J	FAINT K-M	VERY LIGHT N-R	LIGHT S-Z	
CLARITY (10x) GRADING SCALE	FL	IF	VVS	VS	SI	I
	FLAWLESS INTERNALLY FLAWLESS	VERY VERY SLIGHTLY INCLUDED	VERY SLIGHTLY INCLUDED	SLIGHTLY INCLUDED	INCLUDED	

CLARITY CHARACTERISTICS



KEY TO SYMBOLS

Red symbols indicate internal characteristics.
Green symbols indicate external characteristics.



LASERSCRIBESM
Sample Image Used

May 20, 2022

IGI Report Number **LG529261488**

Description **LABORATORY GROWN DIAMOND**

Shape and Cutting Style **OVAL BRILLIANT**

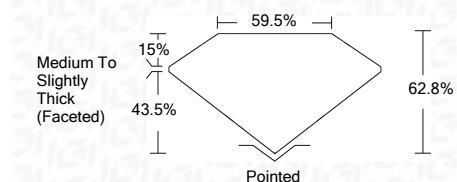
Measurements **10.43 X 7.18 X 4.51 MM**

GRADING RESULTS

Carat Weight **2.12 CARATS**

Color Grade **G**

Clarity Grade **VVS 2**



ADDITIONAL GRADING INFORMATION

Polish **EXCELLENT**

Symmetry **EXCELLENT**

Fluorescence **NONE**

Inscription(s) **LABGROWN IGI LG529261488**

Comments: This Laboratory Grown Diamond was created by Chemical Vapor Deposition (CVD) growth process and may include post-growth treatment.
Type IIa

May 20, 2022

IGI Report Number **LG529261488**

Description **LABORATORY GROWN DIAMOND**

Shape and Cutting Style **OVAL BRILLIANT**

Measurements **10.43 X 7.18 X 4.51 MM**

GRADING RESULTS

Carat Weight **2.12 CARATS**

Color Grade **G**

Clarity Grade **VVS 2**

ADDITIONAL GRADING INFORMATION

Polish **EXCELLENT**

Symmetry **EXCELLENT**

Fluorescence **NONE**

Inscription(s) **LABGROWN IGI LG529261488**

Comments: This Laboratory Grown Diamond was created by Chemical Vapor Deposition (CVD) growth process and may include post-growth treatment.
Type IIa



May 20, 2022	IGI Report No. LG529261488	2.12 CARATS	G
	OVAL BRILLIANT	VVS 2	
	10.43 X 7.18 X 4.51 MM	62.8%	
	Carat Weight	59.5%	
	Color Grade	Medium To Slightly Thick (Faceted)	Pointed
	Clarity Grade		EXCELLENT
	Depth		EXCELLENT
	Table		NONE
	Girdle		LABGROWN IGI LG529261488
	Culet		
	Polish		
	Symmetry		
	Fluorescence		
	Inscription(s)		
	Comments:		

This Laboratory Grown Diamond was created by Chemical Vapor Deposition (CVD) growth process and may include post-growth treatment.
Type IIa