



ELECTRONIC COPY

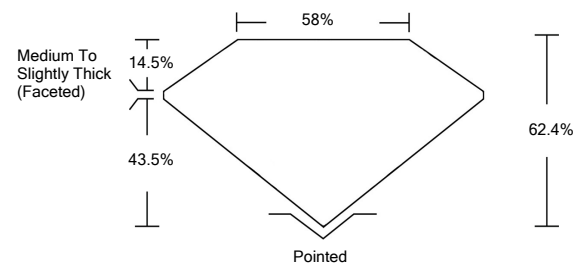
LABORATORY GROWN DIAMOND REPORT

LG529247006

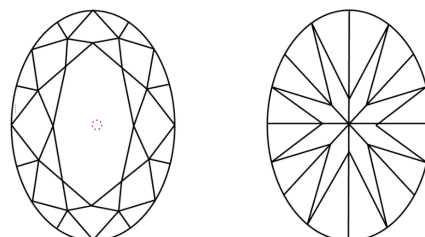
GRADING SCALES

COLOR GRADING SCALE	CL	NC	FT	VL	LT	
	COLORLESS D-F	NEAR COLORLESS G-J	FAINT K-M	VERY LIGHT N-R	LIGHT S-Z	
CLARITY (10x) GRADING SCALE	FL	IF	VVS	VS	SI	I
	FLAWLESS INTERNALLY FLAWLESS	VERY VERY SLIGHTLY INCLUDED	VERY SLIGHTLY INCLUDED	SLIGHTLY INCLUDED	INCLUDED	

PROPORTIONS

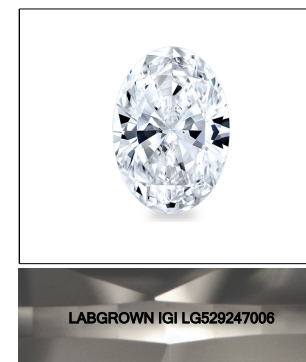


CLARITY CHARACTERISTICS



KEY TO SYMBOLS

Red symbols indicate internal characteristics.
Green symbols indicate external characteristics.



LASERSCRIBESM
Sample Image Used

May 18, 2022

IGI Report Number **LG529247006**

Description **LABORATORY GROWN DIAMOND**

Shape and Cutting Style **OVAL BRILLIANT**

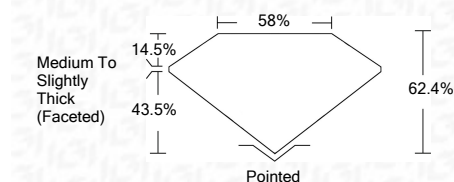
Measurements **10.42 X 7.16 X 4.47 MM**

GRADING RESULTS

Carat Weight **2.09 CARATS**

Color Grade **E**

Clarity Grade **VVS 2**



ADDITIONAL GRADING INFORMATION

Polish **EXCELLENT**

Symmetry **EXCELLENT**

Fluorescence **NONE**

Inscription(s) **LABGROWN IGI LG529247006**

Comments: This Laboratory Grown Diamond was created by Chemical Vapor Deposition (CVD) growth process and may include post-growth treatment.
Type IIa

May 18, 2022

IGI Report Number **LG529247006**

Description **LABORATORY GROWN DIAMOND**

Shape and Cutting Style **OVAL BRILLIANT**

Measurements **10.42 X 7.16 X 4.47 MM**

GRADING RESULTS

Carat Weight **2.09 CARATS**

Color Grade **E**

Clarity Grade **VVS 2**

ADDITIONAL GRADING INFORMATION

Polish **EXCELLENT**

Symmetry **EXCELLENT**

Fluorescence **NONE**

Inscription(s) **LABGROWN IGI LG529247006**

Comments: This Laboratory Grown Diamond was created by Chemical Vapor Deposition (CVD) growth process and may include post-growth treatment.
Type IIa



May 18, 2022	IGI Report No. LG529247006	2.09 CARATS	E
IGI Report No. LG529247006	OVAL BRILLIANT	10.42 X 7.16 X 4.47 MM	VVS 2
IGI Report No. LG529247006	LABGROWN IGI LG529247006	2.09 CARATS	62.4%
IGI Report No. LG529247006	LABGROWN IGI LG529247006	10.42 X 7.16 X 4.47 MM	58%
IGI Report No. LG529247006	LABGROWN IGI LG529247006	2.09 CARATS	Medium To Slightly Thick (Faceted)
IGI Report No. LG529247006	LABGROWN IGI LG529247006	10.42 X 7.16 X 4.47 MM	Pointed
IGI Report No. LG529247006	LABGROWN IGI LG529247006	2.09 CARATS	EXCELLENT
IGI Report No. LG529247006	LABGROWN IGI LG529247006	10.42 X 7.16 X 4.47 MM	EXCELLENT
IGI Report No. LG529247006	LABGROWN IGI LG529247006	2.09 CARATS	NONE
IGI Report No. LG529247006	LABGROWN IGI LG529247006	10.42 X 7.16 X 4.47 MM	LABGROWN IGI LG529247006
IGI Report No. LG529247006	LABGROWN IGI LG529247006	2.09 CARATS	Comments: This Laboratory Grown Diamond was created by Chemical Vapor Deposition (CVD) growth process and may include post-growth treatment. Type IIa