



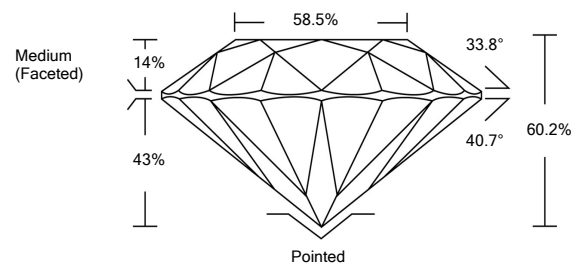
ELECTRONIC COPY

LG528242526

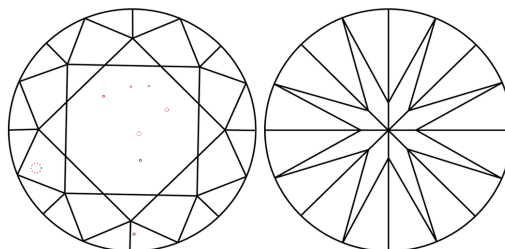
GRADING SCALES

COLOR GRADING SCALE	CL	NC	FT	VL	LT	
	COLORLESS D-F	NEAR COLORLESS G-J	FAINT K-M	VERY LIGHT N-R	LIGHT S-Z	
CLARITY (10x) GRADING SCALE	FL	IF	VVS	VS	SI	I
	FLAWLESS INTERNALLY FLAWLESS	VERY VERY SLIGHTLY INCLUDED	VERY SLIGHTLY INCLUDED	SLIGHTLY INCLUDED	INCLUDED	

PROPORTIONS

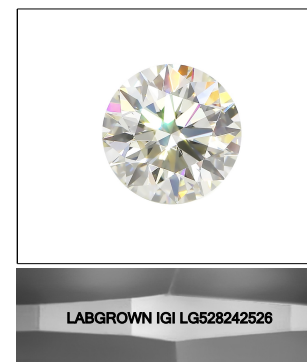


CLARITY CHARACTERISTICS



KEY TO SYMBOLS

Red symbols indicate internal characteristics. Green symbols indicate external characteristics.



LASERSCRIBESM Sample Image Used

May 17, 2022

IGI Report Number **LG528242526**

Description **LABORATORY GROWN DIAMOND**

Shape and Cutting Style **ROUND BRILLIANT**

Measurements **10.31 - 10.37 X 6.22 MM**

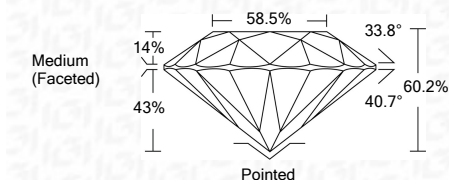
GRADING RESULTS

Carat Weight **4.06 CARATS**

Color Grade **G**

Clarity Grade **VS 2**

Cut Grade **IDEAL**



ADDITIONAL GRADING INFORMATION

Polish **EXCELLENT**

Symmetry **EXCELLENT**

Fluorescence **NONE**

Inscription(s) **LABGROWN IGI LG528242526**

Comments: This Laboratory Grown Diamond was created by Chemical Vapor Deposition (CVD) growth process and may include post-growth treatment. Type IIa



IGI

IGI Report No. LG528242526	4.06 CARATS	G	VS 2	IDEAL	60.2%	58.5%	Medium (Faceted)	Pointed	EXCELLENT	EXCELLENT	NONE	LABGROWN IGI LG528242526
ROUND BRILLIANT	Carat Weight	Color Grade	Clarity Grade	Cut Grade	Depth	Table	Girdle	Culet	Polish	Symmetry	Fluorescence	Inscription(s)
10.31 - 10.37 X 6.22 MM												

May 17, 2022

FD - 10 20

© IGI 2020, International Gemological Institute



Comments: This Laboratory Grown Diamond was created by Chemical Vapor Deposition (CVD) growth process and may include post-growth treatment. Type IIa