



ELECTRONIC COPY

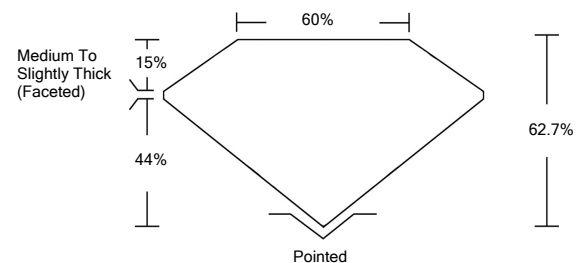
LABORATORY GROWN DIAMOND REPORT

LG528242496

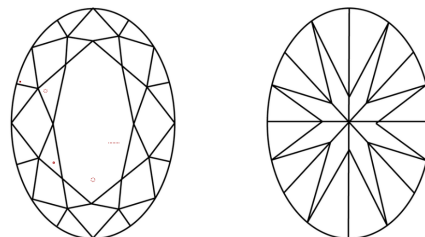
GRADING SCALES

COLOR GRADING SCALE	CL	NC	FT	VL	LT	
	COLORLESS D-F	NEAR COLORLESS G-J	FAINT K-M	VERY LIGHT N-R	LIGHT S-Z	
CLARITY (10x) GRADING SCALE	FL	IF	VVS	VS	SI	I
	FLAWLESS INTERNALLY FLAWLESS	VERY VERY SLIGHTLY INCLUDED	VERY SLIGHTLY INCLUDED	SLIGHTLY INCLUDED	INCLUDED	

PROPORTIONS

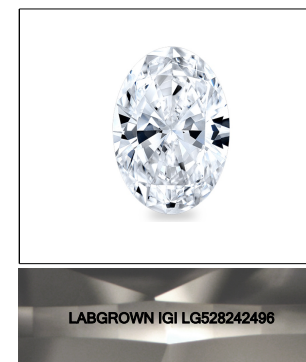


CLARITY CHARACTERISTICS



KEY TO SYMBOLS

Red symbols indicate internal characteristics.
Green symbols indicate external characteristics.



LASERSCRIBESM
Sample Image Used

May 14, 2022

IGI Report Number **LG528242496**

Description **LABORATORY GROWN DIAMOND**

Shape and Cutting Style **OVAL BRILLIANT**

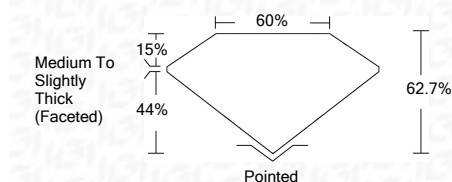
Measurements **10.51 X 7.23 X 4.53 MM**

GRADING RESULTS

Carat Weight **2.16 CARATS**

Color Grade **G**

Clarity Grade **VS 1**



ADDITIONAL GRADING INFORMATION

Polish **EXCELLENT**

Symmetry **EXCELLENT**

Fluorescence **NONE**

Inscription(s) **LABGROWN IGI LG528242496**

Comments: This Laboratory Grown Diamond was created by Chemical Vapor Deposition (CVD) growth process and may include post-growth treatment.
Type IIa

May 14, 2022

IGI Report Number **LG528242496**

Description **LABORATORY GROWN DIAMOND**

Shape and Cutting Style **OVAL BRILLIANT**

Measurements **10.51 X 7.23 X 4.53 MM**

GRADING RESULTS

Carat Weight **2.16 CARATS**

Color Grade **G**

Clarity Grade **VS 1**

ADDITIONAL GRADING INFORMATION

Polish **EXCELLENT**

Symmetry **EXCELLENT**

Fluorescence **NONE**

Inscription(s) **LABGROWN IGI LG528242496**

Comments: This Laboratory Grown Diamond was created by Chemical Vapor Deposition (CVD) growth process and may include post-growth treatment.
Type IIa



IGI

May 14, 2022	IGI Report No. LG528242496	2.16 CARATS	G
IGI Report No. LG528242496	OVAL BRILLIANT	10.51 X 7.23 X 4.53 MM	VS 1
IGI Report No. LG528242496	OVAL BRILLIANT	10.51 X 7.23 X 4.53 MM	62.7%
IGI Report No. LG528242496	OVAL BRILLIANT	10.51 X 7.23 X 4.53 MM	60%
IGI Report No. LG528242496	OVAL BRILLIANT	10.51 X 7.23 X 4.53 MM	Medium To Slightly Thick (Faceted)
IGI Report No. LG528242496	OVAL BRILLIANT	10.51 X 7.23 X 4.53 MM	Pointed
IGI Report No. LG528242496	OVAL BRILLIANT	10.51 X 7.23 X 4.53 MM	EXCELLENT
IGI Report No. LG528242496	OVAL BRILLIANT	10.51 X 7.23 X 4.53 MM	EXCELLENT
IGI Report No. LG528242496	OVAL BRILLIANT	10.51 X 7.23 X 4.53 MM	NONE
IGI Report No. LG528242496	OVAL BRILLIANT	10.51 X 7.23 X 4.53 MM	LABGROWN IGI LG528242496
IGI Report No. LG528242496	OVAL BRILLIANT	10.51 X 7.23 X 4.53 MM	Comments: This Laboratory Grown Diamond was created by Chemical Vapor Deposition (CVD) growth process and may include post-growth treatment. Type IIa