

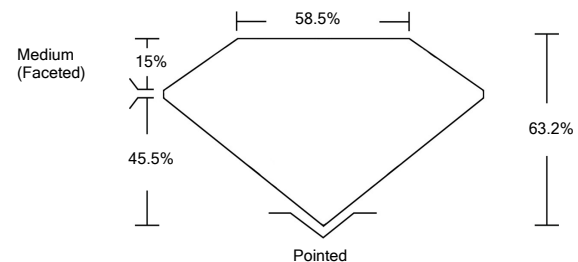


**ELECTRONIC COPY**

**LABORATORY GROWN DIAMOND REPORT**

LG528239881

**PROPORTIONS**



**GRADING SCALES**

|                             |                              |                             |                        |                   |           |   |
|-----------------------------|------------------------------|-----------------------------|------------------------|-------------------|-----------|---|
| COLOR GRADING SCALE         | CL                           | NC                          | FT                     | VLT               | LT        |   |
|                             | COLORLESS D-F                | NEAR COLORLESS G-J          | FAINT K-M              | VERY LIGHT N-R    | LIGHT S-Z |   |
| CLARITY (10x) GRADING SCALE | FL                           | IF                          | VVS                    | VS                | SI        | I |
|                             | FLAWLESS INTERNALLY FLAWLESS | VERY VERY SLIGHTLY INCLUDED | VERY SLIGHTLY INCLUDED | SLIGHTLY INCLUDED | INCLUDED  |   |

May 12, 2022  
 IGI Report Number **LG528239881**  
 Description **LABORATORY GROWN DIAMOND**  
 Shape and Cutting Style **OVAL BRILLIANT**  
 Measurements **13.01 X 8.96 X 5.66 MM**

**GRADING RESULTS**

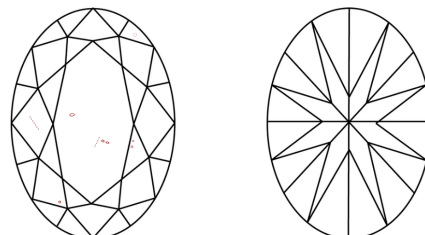
Carat Weight **4.06 CARATS**  
 Color Grade **G**  
 Clarity Grade **SI 1**

**ADDITIONAL GRADING INFORMATION**

Polish **EXCELLENT**  
 Symmetry **EXCELLENT**  
 Fluorescence **NONE**  
 Inscription(s) **LABGROWN IGI LG528239881**

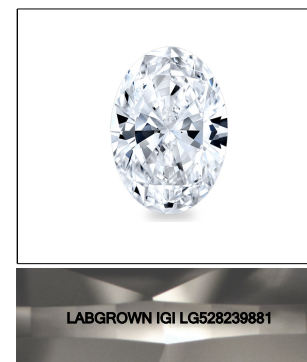
Comments: This Laboratory Grown Diamond was created by Chemical Vapor Deposition (CVD) growth process and may include post-growth treatment.  
 Type IIa

**CLARITY CHARACTERISTICS**



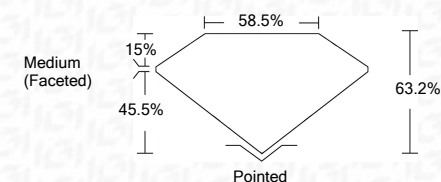
**KEY TO SYMBOLS**

Red symbols indicate internal characteristics.  
 Green symbols indicate external characteristics.



**LASERSCRIBE<sup>SM</sup>**  
 Sample Image Used

May 12, 2022  
 IGI Report Number **LG528239881**  
 Description **LABORATORY GROWN DIAMOND**  
 Shape and Cutting Style **OVAL BRILLIANT**  
 Measurements **13.01 X 8.96 X 5.66 MM**  
**GRADING RESULTS**  
 Carat Weight **4.06 CARATS**  
 Color Grade **G**  
 Clarity Grade **SI 1**



**ADDITIONAL GRADING INFORMATION**

Polish **EXCELLENT**  
 Symmetry **EXCELLENT**  
 Fluorescence **NONE**  
 Inscription(s) **LABGROWN IGI LG528239881**

Comments: This Laboratory Grown Diamond was created by Chemical Vapor Deposition (CVD) growth process and may include post-growth treatment.  
 Type IIa



|                            |                                                                                                                                             |   |      |       |       |                  |         |           |           |      |                          |
|----------------------------|---------------------------------------------------------------------------------------------------------------------------------------------|---|------|-------|-------|------------------|---------|-----------|-----------|------|--------------------------|
| IGI Report No. LG528239881 | 4.06 CARATS                                                                                                                                 | G | SI 1 | 63.2% | 58.5% | Medium (Faceted) | Pointed | EXCELLENT | EXCELLENT | NONE | LABGROWN IGI LG528239881 |
| IGI Report No. LG528239881 | 13.01 X 8.96 X 5.66 MM                                                                                                                      |   |      |       |       |                  |         |           |           |      |                          |
| Carat Weight               | 4.06 CARATS                                                                                                                                 |   |      |       |       |                  |         |           |           |      |                          |
| Color Grade                | G                                                                                                                                           |   |      |       |       |                  |         |           |           |      |                          |
| Clarity Grade              | SI 1                                                                                                                                        |   |      |       |       |                  |         |           |           |      |                          |
| Depth                      | 63.2%                                                                                                                                       |   |      |       |       |                  |         |           |           |      |                          |
| Table                      | 58.5%                                                                                                                                       |   |      |       |       |                  |         |           |           |      |                          |
| Grades                     |                                                                                                                                             |   |      |       |       |                  |         |           |           |      |                          |
| Culet                      | Pointed                                                                                                                                     |   |      |       |       |                  |         |           |           |      |                          |
| Polish                     | EXCELLENT                                                                                                                                   |   |      |       |       |                  |         |           |           |      |                          |
| Symmetry                   | EXCELLENT                                                                                                                                   |   |      |       |       |                  |         |           |           |      |                          |
| Fluorescence               | NONE                                                                                                                                        |   |      |       |       |                  |         |           |           |      |                          |
| Inscription(s)             | LABGROWN IGI LG528239881                                                                                                                    |   |      |       |       |                  |         |           |           |      |                          |
| Comments:                  | This Laboratory Grown Diamond was created by Chemical Vapor Deposition (CVD) growth process and may include post-growth treatment. Type IIa |   |      |       |       |                  |         |           |           |      |                          |

