



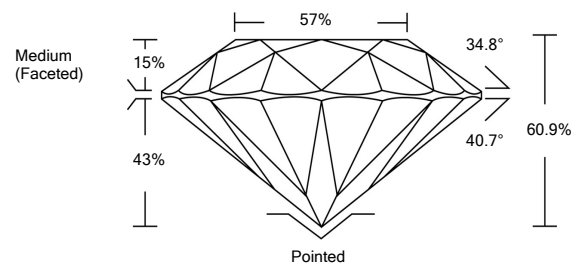
ELECTRONIC COPY

LG528238308

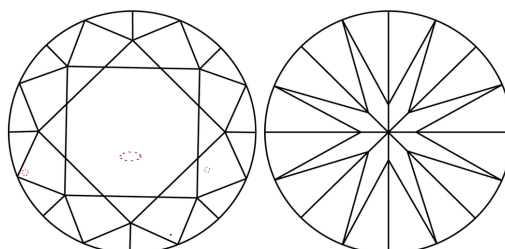
GRADING SCALES

COLOR GRADING SCALE	CL	NC	FT	VL	LT	
	COLORLESS D-F	NEAR COLORLESS G-J	FAINT K-M	VERY LIGHT N-R	LIGHT S-Z	
CLARITY (10x) GRADING SCALE	FL	IF	VVS	VS	SI	I
	FLAWLESS INTERNALLY FLAWLESS	VERY VERY SLIGHTLY INCLUDED	VERY SLIGHTLY INCLUDED	SLIGHTLY INCLUDED	INCLUDED	

PROPORTIONS

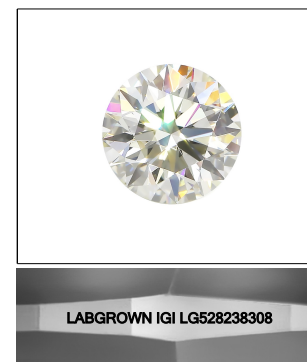


CLARITY CHARACTERISTICS



KEY TO SYMBOLS

Red symbols indicate internal characteristics. Green symbols indicate external characteristics.



LASERSCRIBE<sup>SM</sup> Sample Image Used

May 10, 2022

IGI Report Number **LG528238308**

Description **LABORATORY GROWN DIAMOND**

Shape and Cutting Style **ROUND BRILLIANT**

Measurements **9.12 - 9.19 X 5.57 MM**

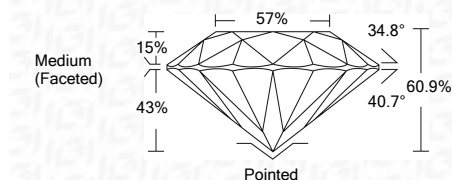
GRADING RESULTS

Carat Weight **2.82 CARATS**

Color Grade **F**

Clarity Grade **VS 1**

Cut Grade **IDEAL**



ADDITIONAL GRADING INFORMATION

Polish **EXCELLENT**

Symmetry **EXCELLENT**

Fluorescence **NONE**

Inscription(s) **LABGROWN IGI LG528238308**

Comments: This Laboratory Grown Diamond was created by Chemical Vapor Deposition (CVD) growth process and may include post-growth treatment. Type IIa



IGI Report No. <b>LG528238308</b>	<b>ROUND BRILLIANT</b>	<b>2.82 CARATS</b>	<b>F</b>
<b>9.12 - 9.19 X 5.57 MM</b>	<b>VS 1</b>	<b>IDEAL</b>	<b>60.9%</b>
Carat Weight	Color Grade	Clarity Grade	Depth
9.12 - 9.19 X 5.57 MM	F	VS 1	60.9%
2.82 CARATS	IDEAL	VS 1	60.9%
60.9%	57%	Medium (Faceted)	
57%	Pointed		
Pointed	EXCELLENT		
EXCELLENT	EXCELLENT		
NONE	LABGROWN IGI		
LABGROWN IGI	LG528238308		

