



**INTERNATIONAL
GEMOLOGICAL
INSTITUTE**

**ELECTRONIC COPY LABORATORY GROWN
DIAMOND REPORT**

**IGI LABORATORY GROWN
DIAMOND ID REPORT**

May 10, 2022
IGI Report Number **LG528238266**

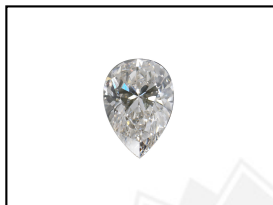
LABORATORY GROWN DIAMOND REPORT

LG528238266

PEAR BRILLIANT
8.09 X 5.05 X 3.15 MM
Carat Weight 0.75 CARAT
Color Grade F
Clarity Grade SI 1
Polish EXCELLENT
Symmetry EXCELLENT
Fluorescence NONE
Inscription(s) LABGROWN IGI
LG528238266

IGI LABORATORY GROWN DIAMOND IDENTIFICATION REPORT

May 10, 2022
IGI Report Number LG528238266
Description LABORATORY GROWN DIAMOND
Shape and Cutting Style PEAR BRILLIANT
Measurements 8.09 X 5.05 X 3.15 MM



Comments: This Laboratory Grown Diamond was created by Chemical Vapor Deposition (CVD) growth process and may include post-growth treatment.
Type IIa

GRADING RESULTS

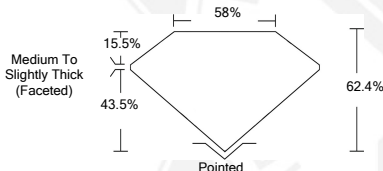
Carat Weight 0.75 CARAT
Color Grade F
Clarity Grade SI 1

ADDITIONAL GRADING INFORMATION

Polish EXCELLENT
Symmetry EXCELLENT
Fluorescence NONE
Inscription(s) LABGROWN IGI LG528238266

Comments: This Laboratory Grown Diamond was created by Chemical Vapor Deposition (CVD) growth process and may include post-growth treatment.
Type IIa

LASERSCRIBESM
Sample Images Used



**IGI LABORATORY GROWN
DIAMOND ID REPORT**

May 10, 2022
IGI Report Number **LG528238266**

PEAR BRILLIANT
8.09 X 5.05 X 3.15 MM
Carat Weight 0.75 CARAT
Color Grade F
Clarity Grade SI 1
Polish EXCELLENT
Symmetry EXCELLENT
Fluorescence NONE
Inscription(s) LABGROWN IGI
LG528238266

Comments: This Laboratory Grown Diamond was created by Chemical Vapor Deposition (CVD) growth process and may include post-growth treatment.
Type IIa

THIS DOCUMENT WAS PRODUCED WITH THE FOLLOWING SECURITY MEASURES: SPECIAL DOCUMENT PAPER, INK SCREENS, WATERMARK, BACKGROUND DESIGN, HOLOGRAM AND OTHER SECURITY FEATURES NOT LISTED AND DO EXCEED DOCUMENT SECURITY INDUSTRY GUIDELINES.

For Terms & Conditions and to verify this report, please visit www.igi.org