



ELECTRONIC COPY

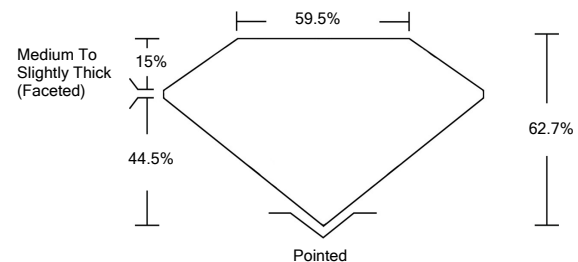
LABORATORY GROWN DIAMOND REPORT

LG528236498

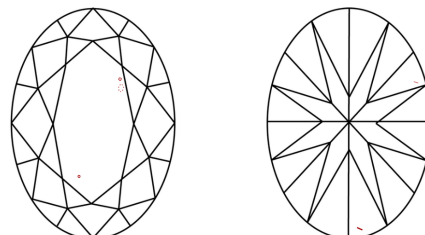
GRADING SCALES

COLOR GRADING SCALE	CL	NC	FT	VL	LT	
	COLORLESS D-F	NEAR COLORLESS G-J	FAINT K-M	VERY LIGHT N-R	LIGHT S-Z	
CLARITY (10x) GRADING SCALE	FL	IF	VVS	VS	SI	I
	FLAWLESS INTERNALLY FLAWLESS	VERY VERY SLIGHTLY INCLUDED	VERY SLIGHTLY INCLUDED	SLIGHTLY INCLUDED	INCLUDED	

PROPORTIONS

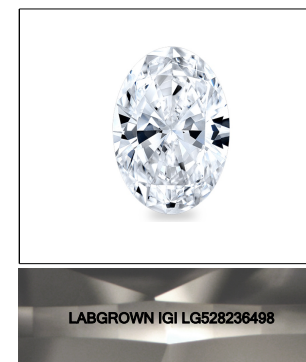


CLARITY CHARACTERISTICS



KEY TO SYMBOLS

Red symbols indicate internal characteristics.
Green symbols indicate external characteristics.



LASERSCRIBESM
Sample Image Used

May 9, 2022

IGI Report Number **LG528236498**

Description **LABORATORY GROWN DIAMOND**

Shape and Cutting Style **OVAL BRILLIANT**

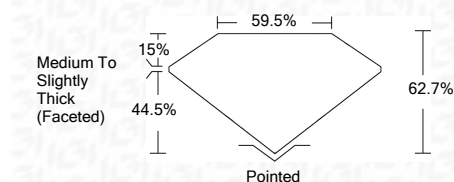
Measurements **10.76 X 7.61 X 4.77 MM**

GRADING RESULTS

Carat Weight **2.43 CARATS**

Color Grade **E**

Clarity Grade **VS 1**



ADDITIONAL GRADING INFORMATION

Polish **EXCELLENT**

Symmetry **EXCELLENT**

Fluorescence **NONE**

Inscription(s) **LABGROWN IGI LG528236498**

Comments: This Laboratory Grown Diamond was created by Chemical Vapor Deposition (CVD) growth process and may include post-growth treatment.
Type IIa

May 9, 2022

IGI Report Number **LG528236498**

Description **LABORATORY GROWN DIAMOND**

Shape and Cutting Style **OVAL BRILLIANT**

Measurements **10.76 X 7.61 X 4.77 MM**

GRADING RESULTS

Carat Weight **2.43 CARATS**

Color Grade **E**

Clarity Grade **VS 1**

ADDITIONAL GRADING INFORMATION

Polish **EXCELLENT**

Symmetry **EXCELLENT**

Fluorescence **NONE**

Inscription(s) **LABGROWN IGI LG528236498**

Comments: This Laboratory Grown Diamond was created by Chemical Vapor Deposition (CVD) growth process and may include post-growth treatment.
Type IIa



IGI



May 9, 2022	IGI Report No. LG528236498	2.43 CARATS	E
IGI Report No. LG528236498	OVAL BRILLIANT	10.76 X 7.61 X 4.77 MM	VS 1
Carat Weight	2.43 CARATS	10.76 X 7.61 X 4.77 MM	62.7%
Color Grade	E	10.76 X 7.61 X 4.77 MM	59.5%
Clarity Grade	VS 1	10.76 X 7.61 X 4.77 MM	Medium To Slightly Thick (Faceted)
Depth	62.7%	10.76 X 7.61 X 4.77 MM	Pointed
Table	59.5%	10.76 X 7.61 X 4.77 MM	EXCELLENT
Grade	Medium To Slightly Thick (Faceted)	10.76 X 7.61 X 4.77 MM	EXCELLENT
Culet	Pointed	10.76 X 7.61 X 4.77 MM	NONE
Polish	EXCELLENT	10.76 X 7.61 X 4.77 MM	LABGROWN IGI LG528236498
Symmetry	EXCELLENT	10.76 X 7.61 X 4.77 MM	
Fluorescence	NONE	10.76 X 7.61 X 4.77 MM	
Inscription(s)	LABGROWN IGI LG528236498	10.76 X 7.61 X 4.77 MM	
Comments:	This Laboratory Grown Diamond was created by Chemical Vapor Deposition (CVD) growth process and may include post-growth treatment. Type IIa	10.76 X 7.61 X 4.77 MM	