

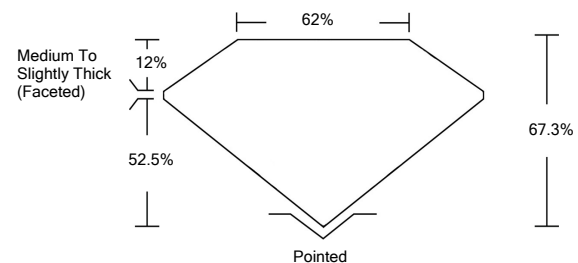


ELECTRONIC COPY

LABORATORY GROWN DIAMOND REPORT

LG528220571

PROPORTIONS



GRADING SCALES

| | | | | | | |
|-----------------------------|------------------------------|-----------------------------|------------------------|-------------------|-----------|---|
| COLOR GRADING SCALE | CL | NC | FT | VLT | LT | |
| | COLORLESS D-F | NEAR COLORLESS G-J | FAINT K-M | VERY LIGHT N-R | LIGHT S-Z | |
| CLARITY (10x) GRADING SCALE | FL | IF | VVS | VS | SI | I |
| | FLAWLESS INTERNALLY FLAWLESS | VERY VERY SLIGHTLY INCLUDED | VERY SLIGHTLY INCLUDED | SLIGHTLY INCLUDED | INCLUDED | |

May 7, 2022

IGI Report Number **LG528220571**

Description **LABORATORY GROWN DIAMOND**

Shape and Cutting Style **CUSHION BRILLIANT**

Measurements **7.97 X 6.45 X 4.34 MM**

GRADING RESULTS

Carat Weight **1.69 CARAT**

Color Grade **G**

Clarity Grade **VS 2**

May 7, 2022

IGI Report Number **LG528220571**

Description **LABORATORY GROWN DIAMOND**

Shape and Cutting Style **CUSHION BRILLIANT**

Measurements **7.97 X 6.45 X 4.34 MM**

GRADING RESULTS

Carat Weight **1.69 CARAT**

Color Grade **G**

Clarity Grade **VS 2**

ADDITIONAL GRADING INFORMATION

Polish **EXCELLENT**

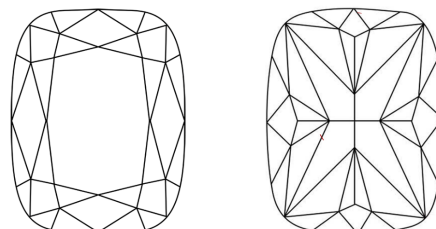
Symmetry **EXCELLENT**

Fluorescence **NONE**

Inscription(s) **LABGROWN IGI LG528220571**

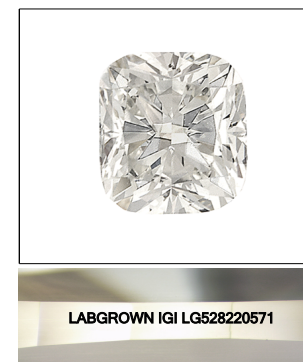
Comments: This Laboratory Grown Diamond was created by Chemical Vapor Deposition (CVD) growth process and may include post-growth treatment.
Type IIa

CLARITY CHARACTERISTICS



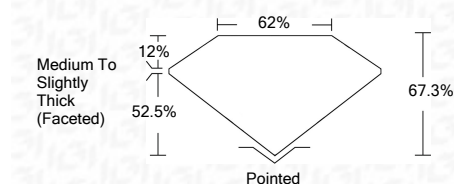
KEY TO SYMBOLS

Red symbols indicate internal characteristics.
Green symbols indicate external characteristics.



LASERSCRIBESM

Sample Image Used



ADDITIONAL GRADING INFORMATION

Polish **EXCELLENT**

Symmetry **EXCELLENT**

Fluorescence **NONE**

Inscription(s) **LABGROWN IGI LG528220571**

Comments: This Laboratory Grown Diamond was created by Chemical Vapor Deposition (CVD) growth process and may include post-growth treatment.
Type IIa



IGI



| | | |
|----------------------------|------------------------------------|--------------|
| IGI Report No. LG528220571 | 1.69 CARAT | G |
| CUSHION BRILLIANT | 67.3% | VS 2 |
| 7.97 X 6.45 X 4.34 MM | 62% | 62% |
| Carat Weight | Medium To Slightly Thick (Faceted) | Pointed |
| Color Grade | EXCELLENT | EXCELLENT |
| Clarity Grade | EXCELLENT | EXCELLENT |
| Depth | NONE | NONE |
| Table | LABGROWN IGI | LABGROWN IGI |
| Girdle | LG528220571 | LG528220571 |
| Culet | | |
| Polish | | |
| Symmetry | | |
| Fluorescence | | |
| Inscription(s) | | |
| Comments: | | |

This Laboratory Grown Diamond was created by Chemical Vapor Deposition (CVD) growth process and may include post-growth treatment.
Type IIa