



ELECTRONIC COPY

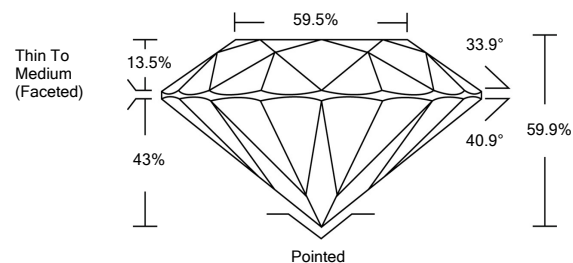
LABORATORY GROWN DIAMOND REPORT

LG528207168

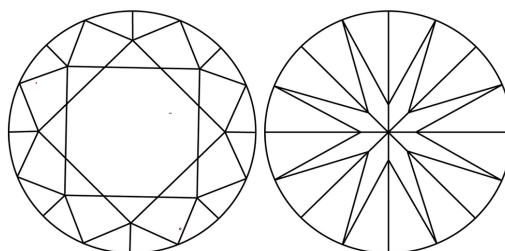
GRADING SCALES

COLOR GRADING SCALE	CL	NC	FT	VL	LT	
	COLORLESS D-F	NEAR COLORLESS G-J	FAINT K-M	VERY LIGHT N-R	LIGHT S-Z	
CLARITY (10x) GRADING SCALE	FL	IF	VVS	VS	SI	I
	FLAWLESS INTERNALLY FLAWLESS	VERY VERY SLIGHTLY INCLUDED	VERY SLIGHTLY INCLUDED	SLIGHTLY INCLUDED	INCLUDED	

PROPORTIONS

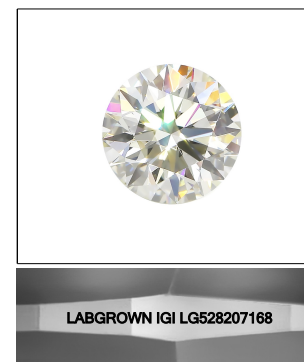


CLARITY CHARACTERISTICS



KEY TO SYMBOLS

Red symbols indicate internal characteristics. Green symbols indicate external characteristics.



LASERSCRIBESM

Sample Image Used

May 5, 2022

IGI Report Number

LG528207168

Description

LABORATORY GROWN DIAMOND

Shape and Cutting Style

ROUND BRILLIANT

Measurements

9.37 - 9.39 X 5.62 MM

GRADING RESULTS

Carat Weight

3.01 CARATS

Color Grade

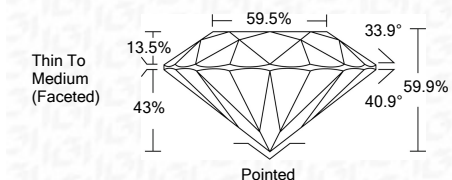
H

Clarity Grade

VS 1

Cut Grade

IDEAL



ADDITIONAL GRADING INFORMATION

Polish

EXCELLENT

Symmetry

EXCELLENT

Fluorescence

NONE

Inscription(s)

LABGROWN IGI LG528207168

Comments: This Laboratory Grown Diamond was created by Chemical Vapor Deposition (CVD) growth process and may include post-growth treatment. Type IIa



IGI



IGI Report No. LG528207168	3.01 CARATS	H	VS 1	IDEAL	59.5%	33.9°	40.9°	43%	13.5%	59.9%	Pointed	EXCELLENT	EXCELLENT	NONE	LABGROWN IGI LG528207168
ROUND BRILLIANT															
9.37 - 9.39 X 5.62 MM															
Carat Weight															
Color Grade															
Clarity Grade															
Cut Grade															
Table															
Depth															
Girdle															
Culet															
Polish															
Symmetry															
Fluorescence															
Inscription(s)															
Comments:	This Laboratory Grown Diamond was created by Chemical Vapor Deposition (CVD) growth process and may include post-growth treatment. Type IIa														