

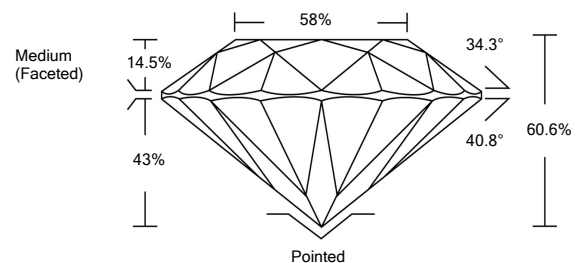


ELECTRONIC COPY

LABORATORY GROWN DIAMOND REPORT

LG528207104

PROPORTIONS



GRADING SCALES

COLOR GRADING SCALE	CL	NC	FT	VL	LT	
	COLORLESS D-F	NEAR COLORLESS G-J	FAINT K-M	VERY LIGHT N-R	LIGHT S-Z	
CLARITY (10x) GRADING SCALE	FL	IF	VVS	VS	SI	I
	FLAWLESS INTERNALLY FLAWLESS	VERY VERY SLIGHTLY INCLUDED	VERY SLIGHTLY INCLUDED	SLIGHTLY INCLUDED	INCLUDED	

May 7, 2022

IGI Report Number

LG528207104

Description

LABORATORY GROWN DIAMOND

Shape and Cutting Style

ROUND BRILLIANT

Measurements

8.13 - 8.18 X 4.94 MM

GRADING RESULTS

Carat Weight

2.00 CARATS

Color Grade

I

Clarity Grade

VS 1

Cut Grade

IDEAL

May 7, 2022

IGI Report Number

LG528207104

Description

LABORATORY GROWN DIAMOND

Shape and Cutting Style

ROUND BRILLIANT

Measurements

8.13 - 8.18 X 4.94 MM

GRADING RESULTS

Carat Weight

2.00 CARATS

Color Grade

I

Clarity Grade

VS 1

Cut Grade

IDEAL

ADDITIONAL GRADING INFORMATION

Polish

EXCELLENT

Symmetry

EXCELLENT

Fluorescence

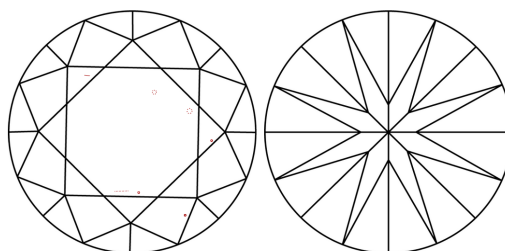
NONE

Inscription(s)

LABGROWN IGI LG528207104

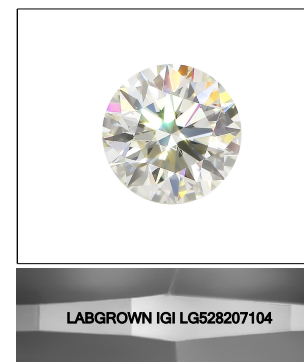
Comments: This Laboratory Grown Diamond was created by Chemical Vapor Deposition (CVD) growth process and may include post-growth treatment. Type IIa

CLARITY CHARACTERISTICS



KEY TO SYMBOLS

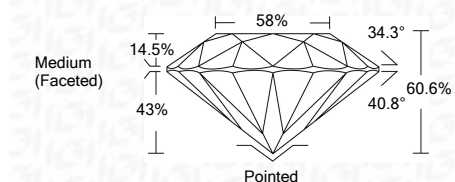
Red symbols indicate internal characteristics. Green symbols indicate external characteristics.



LABGROWN IGI LG528207104

LASERSCRIBESM

Sample Image Used



ADDITIONAL GRADING INFORMATION

Polish

EXCELLENT

Symmetry

EXCELLENT

Fluorescence

NONE

Inscription(s)

LABGROWN IGI LG528207104

Comments: This Laboratory Grown Diamond was created by Chemical Vapor Deposition (CVD) growth process and may include post-growth treatment. Type IIa



IGI

IGI Report No. LG528207104	2.00 CARATS	I	Pointed
ROUND BRILLIANT	VS 1	EXCELLENT	EXCELLENT
8.13 - 8.18 X 4.94 MM	IDEAL	EXCELLENT	EXCELLENT
Carat Weight	60.6%	NONE	NONE
Color Grade	58%	LABGROWN IGI	LABGROWN IGI
Clarity Grade	Medium (Faceted)	LG528207104	LG528207104
Cut Grade			
Depth			
Table			
Girdle			
Culet			
Polish			
Symmetry			
Fluorescence			
Inscription(s)			

Comments: This Laboratory Grown Diamond was created by Chemical Vapor Deposition (CVD) growth process and may include post-growth treatment. Type IIa