

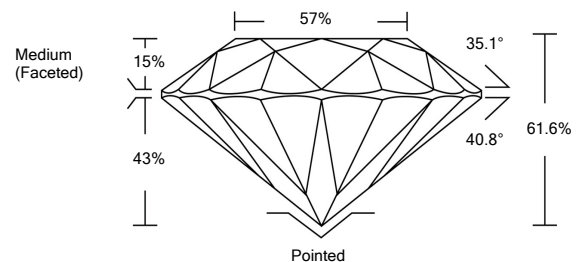


ELECTRONIC COPY

LABORATORY GROWN DIAMOND REPORT

LG526289368

PROPORTIONS



GRADING SCALES

COLOR GRADING SCALE	CL	NC	FT	VL	LT	
	COLORLESS D-F	NEAR COLORLESS G-J	FAINT K-M	VERY LIGHT N-R	LIGHT S-Z	
CLARITY (10x) GRADING SCALE	FL	IF	VVS	VS	SI	I
	FLAWLESS INTERNALLY FLAWLESS	VERY VERY SLIGHTLY INCLUDED	VERY SLIGHTLY INCLUDED	SLIGHTLY INCLUDED	INCLUDED	

May 4, 2022

IGI Report Number

LG526289368

Description

LABORATORY GROWN DIAMOND

Shape and Cutting Style

ROUND BRILLIANT

Measurements

9.45 - 9.47 X 5.83 MM

GRADING RESULTS

Carat Weight

3.20 CARATS

Color Grade

F

Clarity Grade

VS 2

Cut Grade

IDEAL

May 4, 2022

IGI Report Number

LG526289368

Description

LABORATORY GROWN DIAMOND

Shape and Cutting Style

ROUND BRILLIANT

Measurements

9.45 - 9.47 X 5.83 MM

GRADING RESULTS

Carat Weight

3.20 CARATS

Color Grade

F

Clarity Grade

VS 2

Cut Grade

IDEAL

ADDITIONAL GRADING INFORMATION

Polish

EXCELLENT

Symmetry

EXCELLENT

Fluorescence

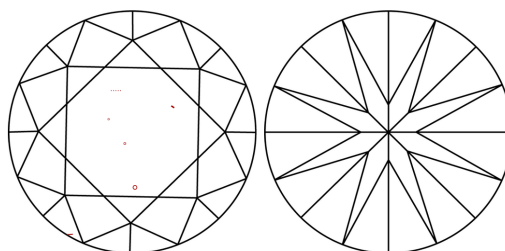
NONE

Inscription(s)

LABGROWN IGI LG526289368

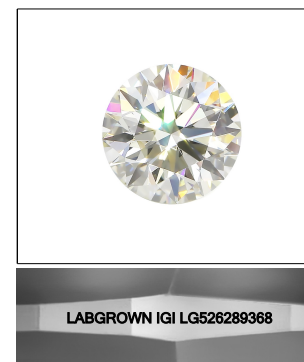
Comments: This Laboratory Grown Diamond was created by Chemical Vapor Deposition (CVD) growth process and may include post-growth treatment. Type IIa

CLARITY CHARACTERISTICS



KEY TO SYMBOLS

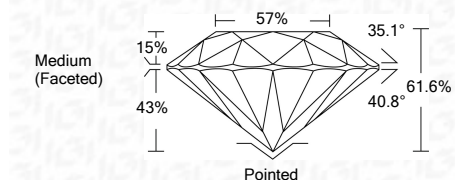
Red symbols indicate internal characteristics. Green symbols indicate external characteristics.



LABGROWN IGI LG526289368

LASERSCRIBESM

Sample Image Used



ADDITIONAL GRADING INFORMATION

Polish

EXCELLENT

Symmetry

EXCELLENT

Fluorescence

NONE

Inscription(s)

LABGROWN IGI LG526289368

Comments: This Laboratory Grown Diamond was created by Chemical Vapor Deposition (CVD) growth process and may include post-growth treatment. Type IIa



IGI

May 4, 2022
IGI Report No. LG526289368

ROUND BRILLIANT

9.45 - 9.47 X 5.83 MM

3.20 CARATS

F

VS 2

IDEAL

61.6%

57%

Medium (Faceted)

Pointed

EXCELLENT

EXCELLENT

NONE

LABGROWN IGI

LG526289368

Comments:

This Laboratory Grown Diamond was created by Chemical Vapor Deposition (CVD) growth process and may include post-growth treatment. Type IIa