

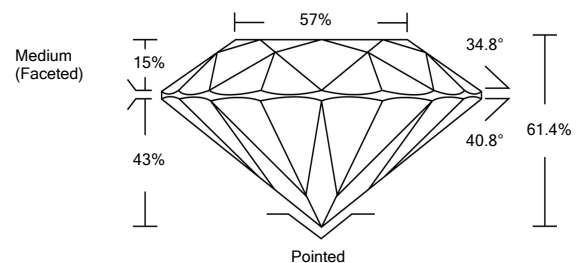


ELECTRONIC COPY

LABORATORY GROWN DIAMOND REPORT

LG526289337

PROPORTIONS



GRADING SCALES

| | | | | | | |
|-----------------------------|------------------------------|-----------------------------|------------------------|-------------------|-----------|---|
| COLOR GRADING SCALE | CL | NC | FT | VL | LT | |
| | COLORLESS D-F | NEAR COLORLESS G-J | FAINT K-M | VERY LIGHT N-R | LIGHT S-Z | |
| CLARITY (10x) GRADING SCALE | FL | IF | VVS | VS | SI | I |
| | FLAWLESS INTERNALLY FLAWLESS | VERY VERY SLIGHTLY INCLUDED | VERY SLIGHTLY INCLUDED | SLIGHTLY INCLUDED | INCLUDED | |

May 5, 2022

IGI Report Number

LG526289337

Description

LABORATORY GROWN DIAMOND

Shape and Cutting Style

ROUND BRILLIANT

Measurements

9.05 - 9.09 X 5.57 MM

GRADING RESULTS

Carat Weight

2.80 CARATS

Color Grade

E

Clarity Grade

VS 1

Cut Grade

IDEAL

May 5, 2022

IGI Report Number

LG526289337

Description

LABORATORY GROWN DIAMOND

Shape and Cutting Style

ROUND BRILLIANT

Measurements

9.05 - 9.09 X 5.57 MM

GRADING RESULTS

Carat Weight

2.80 CARATS

Color Grade

E

Clarity Grade

VS 1

Cut Grade

IDEAL

ADDITIONAL GRADING INFORMATION

Polish

EXCELLENT

Symmetry

EXCELLENT

Fluorescence

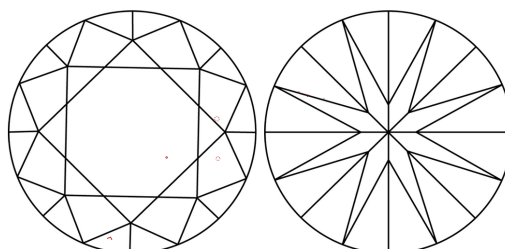
NONE

Inscription(s)

LABGROWN IGI LG526289337

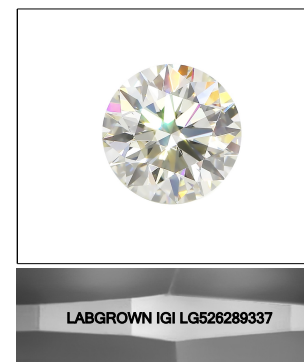
Comments: This Laboratory Grown Diamond was created by Chemical Vapor Deposition (CVD) growth process and may include post-growth treatment. Type IIa

CLARITY CHARACTERISTICS



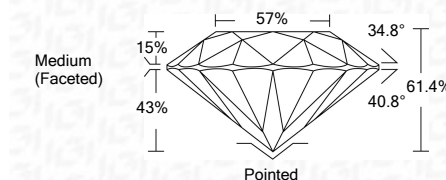
KEY TO SYMBOLS

Red symbols indicate internal characteristics. Green symbols indicate external characteristics.



LASERSCRIBESM

Sample Image Used



ADDITIONAL GRADING INFORMATION

Polish

EXCELLENT

Symmetry

EXCELLENT

Fluorescence

NONE

Inscription(s)

LABGROWN IGI LG526289337

Comments: This Laboratory Grown Diamond was created by Chemical Vapor Deposition (CVD) growth process and may include post-growth treatment. Type IIa



IGI

| | | | |
|----------------------------|------------------|--------------|--------------|
| IGI Report No. LG526289337 | 2.80 CARATS | E | Pointed |
| ROUND BRILLIANT | VS 1 | EXCELLENT | EXCELLENT |
| 9.05 - 9.09 X 5.57 MM | IDEAL | EXCELLENT | NONE |
| Carat Weight | 61.4% | LABGROWN IGI | LABGROWN IGI |
| Color Grade | 57% | LG526289337 | LG526289337 |
| Clarity Grade | Medium (Faceted) | | |
| Cut Grade | | | |
| Depth | | | |
| Table | | | |
| Girdle | | | |
| Culet | | | |
| Polish | | | |
| Symmetry | | | |
| Fluorescence | | | |
| Inscription(s) | | | |

Comments: This Laboratory Grown Diamond was created by Chemical Vapor Deposition (CVD) growth process and may include post-growth treatment. Type IIa