



**ELECTRONIC COPY**

**LABORATORY GROWN DIAMOND REPORT**

October 16, 2022  
 IGI Report Number **LG526287068**  
 Description **LABORATORY GROWN  
DIAMOND**  
 Shape and Cutting Style **CUT CORNERED RECTANGULAR  
MODIFIED BRILLIANT**  
 Measurements **9.22 X 6.35 X 4.20 MM**

**GRADING RESULTS**

Carat Weight **2.19 CARATS**  
 Color Grade **E**  
 Clarity Grade **VS 1**

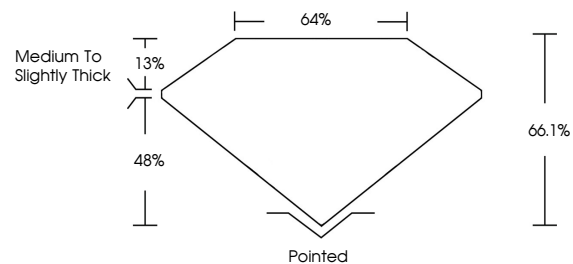
**ADDITIONAL GRADING INFORMATION**

Polish **EXCELLENT**  
 Symmetry **EXCELLENT**  
 Fluorescence **NONE**  
 Inscription(s) **LABGROWN (IGI) LG526287068**

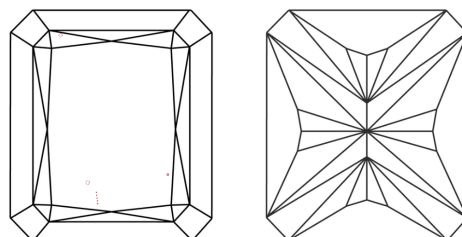
Comments: This Laboratory Grown Diamond was created by Chemical Vapor Deposition (CVD) growth process and may include post-growth treatment. Type IIa

**LG526287068**

**PROPORTIONS**



**CLARITY CHARACTERISTICS**



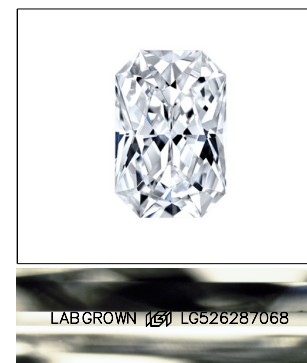
**KEY TO SYMBOLS**

Red symbols indicate internal characteristics.  
 Green symbols indicate external characteristics.

**LABORATORY GROWN  
DIAMOND REPORT**

**GRADING SCALES**

COLOR GRADING SCALE	CL	NC	FT	VLT	LT	
	COLORLESS D-F	NEAR COLORLESS G-J	FAINT K-M	VERY LIGHT N-R	LIGHT S-Z	
CLARITY (10x) GRADING SCALE	FL	IF	VVS	VS	SI	I
	FLAWLESS INTERNALLY FLAWLESS	VERY VERY SLIGHTLY INCLUDED	VERY SLIGHTLY INCLUDED	SLIGHTLY INCLUDED	INCLUDED	



**LASERSCRIBE<sup>SM</sup>**

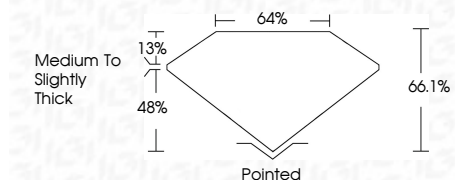
Sample Image Used

**LABORATORY GROWN DIAMOND REPORT**

October 16, 2022  
 IGI Report Number **LG526287068**  
 Description **LABORATORY GROWN  
DIAMOND**  
 Shape and Cutting Style **CUT CORNERED  
RECTANGULAR MODIFIED  
BRILLIANT**  
 Measurements **9.22 X 6.35 X 4.20 MM**

**GRADING RESULTS**

Carat Weight **2.19 CARATS**  
 Color Grade **E**  
 Clarity Grade **VS 1**



**ADDITIONAL GRADING INFORMATION**

Polish **EXCELLENT**  
 Symmetry **EXCELLENT**  
 Fluorescence **NONE**  
 Inscription(s) **LABGROWN (IGI) LG526287068**

Comments: This Laboratory Grown Diamond was created by Chemical Vapor Deposition (CVD) growth process and may include post-growth treatment. Type IIa



**IGI**

October 16, 2022	IGI Report No. <b>LG526287068</b>	<b>2.19 CARATS</b>	<b>E</b>
<b>CUT CORNERED RECT. MODIFIED</b>	<b>9.22 X 6.35 X 4.20 MM</b>	<b>VS 1</b>	<b>66.1%</b>
Carat Weight	Color Grade	Clarity Grade	Depth
2.19 CARATS	E	VS 1	66.1%
Table	Grade	Table	Grade
64%	Medium to Slightly Thick	64%	Medium to Slightly Thick
Culet	Polish	Symmetry	Fluorescence
Pointed	EXCELLENT	EXCELLENT	NONE
Inscription(s)	Comments:		
LABGROWN (IGI) LG526287068			

The Laboratory Grown Diamond was created by Chemical Vapor Deposition (CVD) growth process and may include post-growth treatment. Type IIa

