

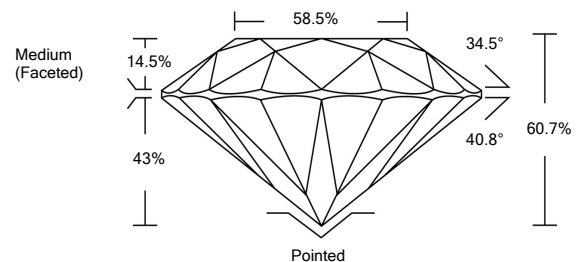


**ELECTRONIC COPY**

**LABORATORY GROWN DIAMOND REPORT**

LG526284353

**PROPORTIONS**



**GRADING SCALES**

COLOR GRADING SCALE	CL	NC	FT	VLT	LT	
	COLORLESS D-F	NEAR COLORLESS G-J	FAINT K-M	VERY LIGHT N-R	LIGHT S-Z	
CLARITY (10x) GRADING SCALE	FL	IF	VVS	VS	SI	I
	FLAWLESS INTERNALLY FLAWLESS	VERY VERY SLIGHTLY INCLUDED	VERY SLIGHTLY INCLUDED	SLIGHTLY INCLUDED	INCLUDED	

May 3, 2022

IGI Report Number **LG526284353**

Description **LABORATORY GROWN DIAMOND**

Shape and Cutting Style **ROUND BRILLIANT**

Measurements **9.40 - 9.46 X 5.73 MM**

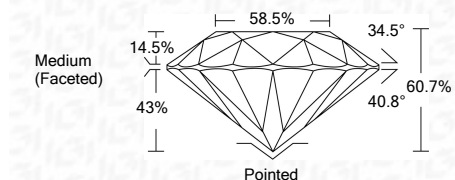
**GRADING RESULTS**

Carat Weight **3.12 CARATS**

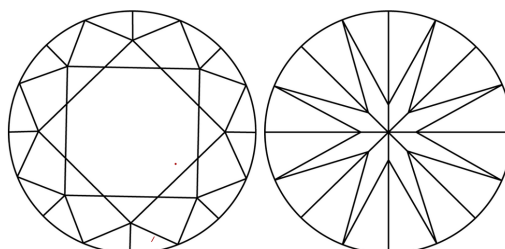
Color Grade **F**

Clarity Grade **VS 1**

Cut Grade **IDEAL**

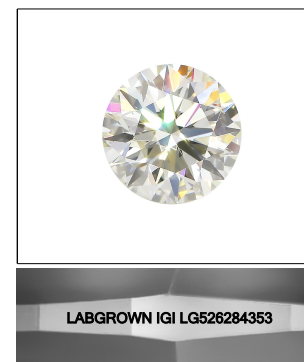


**CLARITY CHARACTERISTICS**



**KEY TO SYMBOLS**

Red symbols indicate internal characteristics.  
Green symbols indicate external characteristics.



**LASERSCRIBE<sup>SM</sup>**

Sample Image Used

**ADDITIONAL GRADING INFORMATION**

Polish **EXCELLENT**

Symmetry **EXCELLENT**

Fluorescence **NONE**

Inscription(s) **LABGROWN IGI LG526284353**

Comments: This Laboratory Grown Diamond was created by Chemical Vapor Deposition (CVD) growth process and may include post-growth treatment.  
Type IIa

May 3, 2022

IGI Report Number **LG526284353**

Description **LABORATORY GROWN DIAMOND**

Shape and Cutting Style **ROUND BRILLIANT**

Measurements **9.40 - 9.46 X 5.73 MM**

**GRADING RESULTS**

Carat Weight **3.12 CARATS**

Color Grade **F**

Clarity Grade **VS 1**

Cut Grade **IDEAL**

**ADDITIONAL GRADING INFORMATION**

Polish **EXCELLENT**

Symmetry **EXCELLENT**

Fluorescence **NONE**

Inscription(s) **LABGROWN IGI LG526284353**

Comments: This Laboratory Grown Diamond was created by Chemical Vapor Deposition (CVD) growth process and may include post-growth treatment.  
Type IIa



**IGI**

May 3, 2022	IGI Report No. LG526284353	3.12 CARATS	F	Pointed	EXCELLENT	EXCELLENT	NONE	LABGROWN IGI LG526284353	<p>Comments: This Laboratory Grown Diamond was created by Chemical Vapor Deposition (CVD) growth process and may include post-growth treatment. Type IIa</p>
ROUND BRILLIANT	9.40 - 9.46 X 5.73 MM	VS 1	IDEAL	60.7%	58.5%	Medium (Faceted)	None		
Color Grade	3.12 CARATS								
Clarity Grade									
Cut Grade									
Table									
Depth									
Girdle									
Culet									
Polish									
Symmetry									
Fluorescence									
Inscription(s)									