



ELECTRONIC COPY

LABORATORY GROWN DIAMOND REPORT

April 28, 2022
 IGI Report Number **LG526278453**
 Description **LABORATORY GROWN
DIAMOND**
 Shape and Cutting Style **OVAL BRILLIANT**
 Measurements **11.55 X 8.21 X 5.16 MM**

GRADING RESULTS

Carat Weight **3.06 CARATS**
 Color Grade **E**
 Clarity Grade **VS 1**

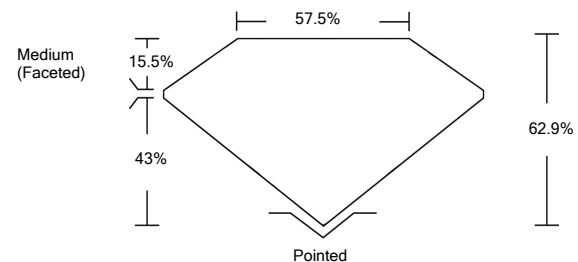
ADDITIONAL GRADING INFORMATION

Polish **EXCELLENT**
 Symmetry **EXCELLENT**
 Fluorescence **NONE**
 Inscription(s) **LABGROWN IGI LG526278453**

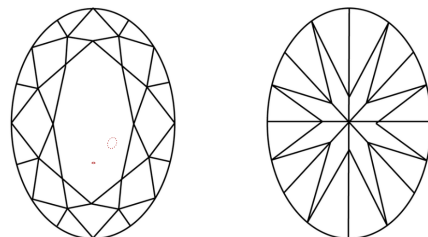
Comments: This Laboratory Grown Diamond was created by Chemical Vapor Deposition (CVD) growth process and may include post-growth treatment.
 Type IIa

LG526278453

PROPORTIONS



CLARITY CHARACTERISTICS

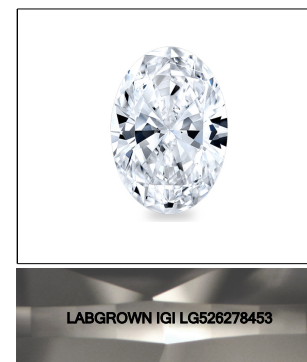


KEY TO SYMBOLS

Red symbols indicate internal characteristics.
 Green symbols indicate external characteristics.

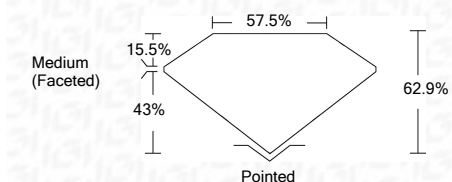
GRADING SCALES

COLOR GRADING SCALE	CL	NC	FT	VL	LT	
	COLORLESS D-F	NEAR COLORLESS G-J	FAINT K-M	VERY LIGHT N-R	LIGHT S-Z	
CLARITY (10x) GRADING SCALE	FL	IF	VVS	VS	SI	I
	FLAWLESS INTERNALLY FLAWLESS	VERY VERY SLIGHTLY INCLUDED	VERY SLIGHTLY INCLUDED	SLIGHTLY INCLUDED	INCLUDED	INCLUDED



LASERSCRIBESM
 Sample Image Used

April 28, 2022
 IGI Report Number **LG526278453**
 Description **LABORATORY GROWN
DIAMOND**
 Shape and Cutting Style **OVAL BRILLIANT**
 Measurements **11.55 X 8.21 X 5.16 MM**
GRADING RESULTS
 Carat Weight **3.06 CARATS**
 Color Grade **E**
 Clarity Grade **VS 1**



ADDITIONAL GRADING INFORMATION

Polish **EXCELLENT**
 Symmetry **EXCELLENT**
 Fluorescence **NONE**
 Inscription(s) **LABGROWN IGI LG526278453**

Comments: This Laboratory Grown Diamond was created by Chemical Vapor Deposition (CVD) growth process and may include post-growth treatment.
 Type IIa



IGI

April 28, 2022
 IGI Report No. **LG526278453**
OVAL BRILLIANT
 Measurements **11.55 X 8.21 X 5.16 MM**
 Carat Weight **3.06 CARATS**
 Color Grade **E**
 Clarity Grade **VS 1**
 Depth **62.9%**
 Table **57.5%**
 Girdle **Medium (Faceted)**
 Culet **Pointed**
 Polish **EXCELLENT**
 Symmetry **EXCELLENT**
 Fluorescence **NONE**
 Inscription(s) **LABGROWN IGI LG526278453**
 Comments: This Laboratory Grown Diamond was created by Chemical Vapor Deposition (CVD) growth process and may include post-growth treatment.
 Type IIa

