

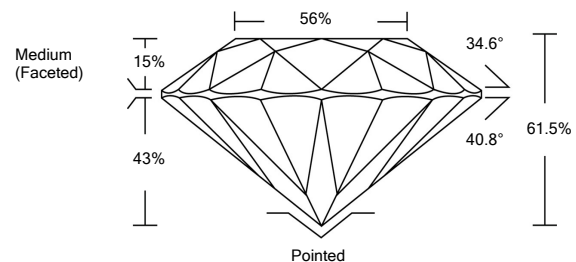


ELECTRONIC COPY

LABORATORY GROWN DIAMOND REPORT

LG526278449

PROPORTIONS



GRADING SCALES

COLOR GRADING SCALE	CL	NC	FT	VL	LT	
	COLORLESS D-F	NEAR COLORLESS G-J	FAINT K-M	VERY LIGHT N-R	LIGHT S-Z	
CLARITY (10x) GRADING SCALE	FL	IF	VVS	VS	SI	I
	FLAWLESS INTERNALLY FLAWLESS	VERY VERY SLIGHTLY INCLUDED	VERY SLIGHTLY INCLUDED	SLIGHTLY INCLUDED	INCLUDED	

May 4, 2022

IGI Report Number

LG526278449

Description

LABORATORY GROWN DIAMOND

Shape and Cutting Style

ROUND BRILLIANT

Measurements

9.59 - 9.62 X 5.91 MM

GRADING RESULTS

Carat Weight

3.33 CARATS

Color Grade

F

Clarity Grade

VS 1

Cut Grade

IDEAL

May 4, 2022

IGI Report Number

LG526278449

Description

LABORATORY GROWN DIAMOND

Shape and Cutting Style

ROUND BRILLIANT

Measurements

9.59 - 9.62 X 5.91 MM

GRADING RESULTS

Carat Weight

3.33 CARATS

Color Grade

F

Clarity Grade

VS 1

Cut Grade

IDEAL

ADDITIONAL GRADING INFORMATION

Polish

EXCELLENT

Symmetry

EXCELLENT

Fluorescence

NONE

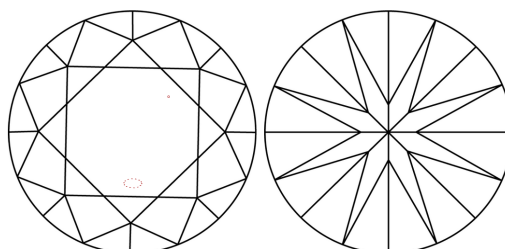
Inscription(s)

LABGROWN IGI LG526278449

Comments: This Laboratory Grown Diamond was created by Chemical Vapor Deposition (CVD) growth process and may include post-growth treatment.

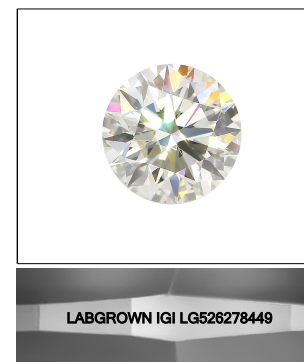
Type IIa

CLARITY CHARACTERISTICS



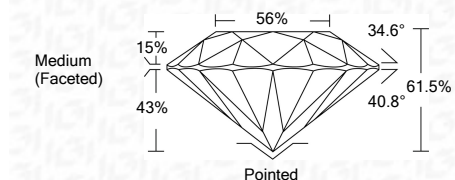
KEY TO SYMBOLS

Red symbols indicate internal characteristics.
Green symbols indicate external characteristics.



LASERSCRIBESM

Sample Image Used



ADDITIONAL GRADING INFORMATION

Polish

EXCELLENT

Symmetry

EXCELLENT

Fluorescence

NONE

Inscription(s)

LABGROWN IGI LG526278449

Comments: This Laboratory Grown Diamond was created by Chemical Vapor Deposition (CVD) growth process and may include post-growth treatment.

Type IIa



IGI

IGI Report No. LG526278449	3.33 CARATS	F	Pointed
ROUND BRILLIANT	VS 1	EXCELLENT	EXCELLENT
9.59 - 9.62 X 5.91 MM	IDEAL	EXCELLENT	EXCELLENT
Carat Weight	61.5%	NONE	NONE
Color Grade	56%	LABGROWN IGI	LABGROWN IGI
Clarity Grade	Medium (Faceted)	LG526278449	LG526278449
Cut Grade			
Depth			
Table			
Girdle			
Culet			
Polish			
Symmetry			
Fluorescence			
Inscription(s)			

Comments: This Laboratory Grown Diamond was created by Chemical Vapor Deposition (CVD) growth process and may include post-growth treatment.
Type IIa