



ELECTRONIC COPY

LABORATORY GROWN DIAMOND REPORT

April 28, 2022
 IGI Report Number **LG526278439**
 Description **LABORATORY GROWN
DIAMOND**
 Shape and Cutting Style **ROUND BRILLIANT**
 Measurements **9.89 - 9.91 X 6.09 MM**

GRADING RESULTS

Carat Weight **3.65 CARATS**
 Color Grade **G**
 Clarity Grade **VS 2**
 Cut Grade **IDEAL**

ADDITIONAL GRADING INFORMATION

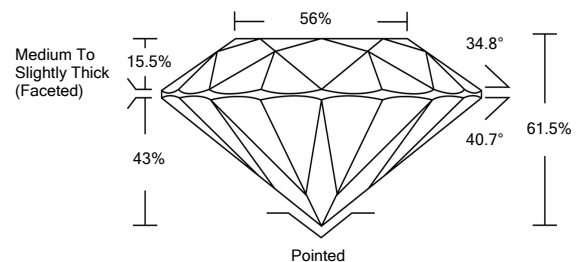
Polish **EXCELLENT**
 Symmetry **EXCELLENT**
 Fluorescence **NONE**

Inscription(s) **LABGROWN IGI LG526278439**

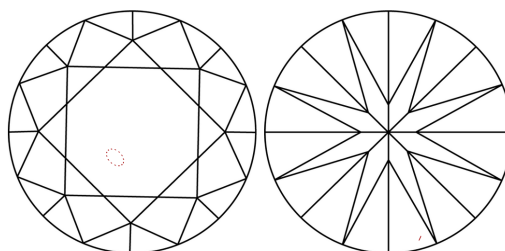
Comments: This Laboratory Grown Diamond was created by Chemical Vapor Deposition (CVD) growth process and may include post-growth treatment.
 Type IIa

LG526278439

PROPORTIONS



CLARITY CHARACTERISTICS

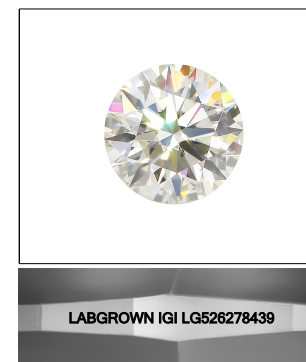


KEY TO SYMBOLS

Red symbols indicate internal characteristics.
 Green symbols indicate external characteristics.

GRADING SCALES

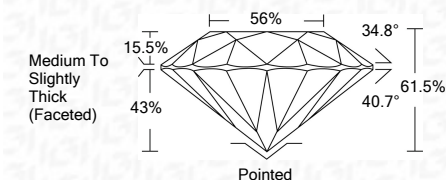
| COLOR GRADING SCALE | CL | NC | FT | VL | LT | |
|-----------------------------|------------------------------|-----------------------------|------------------------|-------------------|-----------|---|
| | COLORLESS D-F | NEAR COLORLESS G-J | FAINT K-M | VERY LIGHT N-R | LIGHT S-Z | |
| CLARITY (10x) GRADING SCALE | FL | IF | VVS | VS | SI | I |
| | FLAWLESS INTERNALLY FLAWLESS | VERY VERY SLIGHTLY INCLUDED | VERY SLIGHTLY INCLUDED | SLIGHTLY INCLUDED | INCLUDED | |



LASERSCRIBESM

Sample Image Used

April 28, 2022
 IGI Report Number **LG526278439**
 Description **LABORATORY GROWN
DIAMOND**
 Shape and Cutting Style **ROUND BRILLIANT**
 Measurements **9.89 - 9.91 X 6.09 MM**
GRADING RESULTS
 Carat Weight **3.65 CARATS**
 Color Grade **G**
 Clarity Grade **VS 2**
 Cut Grade **IDEAL**



ADDITIONAL GRADING INFORMATION

Polish **EXCELLENT**
 Symmetry **EXCELLENT**
 Fluorescence **NONE**

Inscription(s) **LABGROWN IGI LG526278439**

Comments: This Laboratory Grown Diamond was created by Chemical Vapor Deposition (CVD) growth process and may include post-growth treatment.
 Type IIa



IGI



| | | | | | | | | | | | | | |
|----------------------------|----------------------------|-----------------------|-------------|------|-------|-------|-----|------------------------------------|---------|-----------|-----------|------|--------------------------|
| April 28, 2022 | IGI Report No. LG526278439 | 3.65 CARATS | G | VS 2 | IDEAL | 61.5% | 56% | Medium To Slightly Thick (Faceted) | Pointed | EXCELLENT | EXCELLENT | NONE | LABGROWN IGI LG526278439 |
| IGI Report No. LG526278439 | ROUND BRILLIANT | 9.89 - 9.91 X 6.09 MM | 3.65 CARATS | VS 2 | IDEAL | 61.5% | 56% | Medium To Slightly Thick (Faceted) | Pointed | EXCELLENT | EXCELLENT | NONE | LABGROWN IGI LG526278439 |
| IGI Report No. LG526278439 | ROUND BRILLIANT | 9.89 - 9.91 X 6.09 MM | 3.65 CARATS | VS 2 | IDEAL | 61.5% | 56% | Medium To Slightly Thick (Faceted) | Pointed | EXCELLENT | EXCELLENT | NONE | LABGROWN IGI LG526278439 |

Comments: This Laboratory Grown Diamond was created by Chemical Vapor Deposition (CVD) growth process and may include post-growth treatment.
 Type IIa