



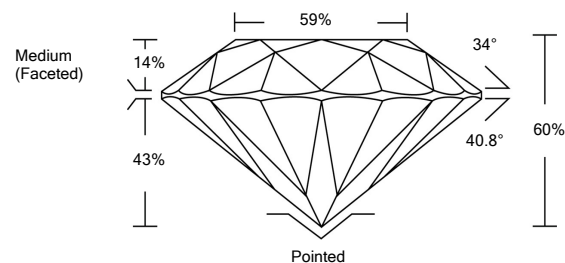
ELECTRONIC COPY

LG526275451

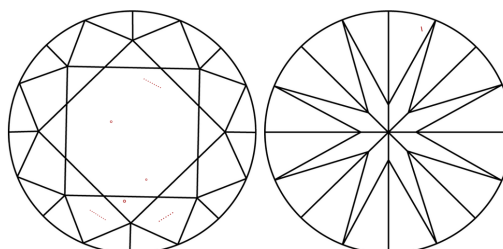
GRADING SCALES

| | | | | | | |
|-----------------------------|------------------------------|-----------------------------|------------------------|-------------------|-----------|---|
| COLOR GRADING SCALE | CL | NC | FT | VL | LT | |
| | COLORLESS D-F | NEAR COLORLESS G-J | FAINT K-M | VERY LIGHT N-R | LIGHT S-Z | |
| CLARITY (10x) GRADING SCALE | FL | IF | VVS | VS | SI | I |
| | FLAWLESS INTERNALLY FLAWLESS | VERY VERY SLIGHTLY INCLUDED | VERY SLIGHTLY INCLUDED | SLIGHTLY INCLUDED | INCLUDED | |

PROPORTIONS

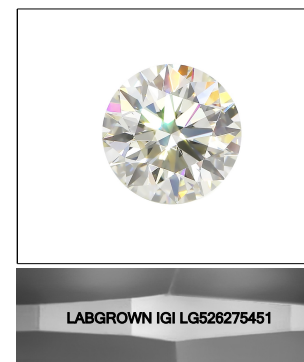


CLARITY CHARACTERISTICS



KEY TO SYMBOLS

Red symbols indicate internal characteristics. Green symbols indicate external characteristics.



LASERSCRIBESM

Sample Image Used

May 3, 2022

IGI Report Number **LG526275451**

Description **LABORATORY GROWN DIAMOND**

Shape and Cutting Style **ROUND BRILLIANT**

Measurements **9.43 - 9.47 X 5.67 MM**

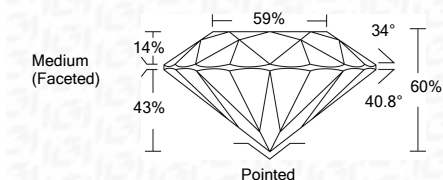
GRADING RESULTS

Carat Weight **3.07 CARATS**

Color Grade **F**

Clarity Grade **VS 1**

Cut Grade **IDEAL**



ADDITIONAL GRADING INFORMATION

Polish **EXCELLENT**

Symmetry **EXCELLENT**

Fluorescence **NONE**

Inscription(s) **LABGROWN IGI LG526275451**

Comments: This Laboratory Grown Diamond was created by Chemical Vapor Deposition (CVD) growth process and may include post-growth treatment. Type IIa



IGI

| | | | | | | | | | | | | |
|----------------------------|-------------|---|------|-------|-----|-----|------------------|---------|-----------|-----------|------|--------------------------|
| IGI Report No. LG526275451 | 3.07 CARATS | F | VS 1 | IDEAL | 60% | 59% | Medium (Faceted) | Pointed | EXCELLENT | EXCELLENT | NONE | LABGROWN IGI LG526275451 |
| ROUND BRILLIANT | | | | | | | | | | | | |
| 9.43 - 9.47 X 5.67 MM | | | | | | | | | | | | |
| Carat Weight | | | | | | | | | | | | |
| Color Grade | | | | | | | | | | | | |
| Clarity Grade | | | | | | | | | | | | |
| Cut Grade | | | | | | | | | | | | |
| Depth | | | | | | | | | | | | |
| Table | | | | | | | | | | | | |
| Girdle | | | | | | | | | | | | |
| Culet | | | | | | | | | | | | |
| Polish | | | | | | | | | | | | |
| Symmetry | | | | | | | | | | | | |
| Fluorescence | | | | | | | | | | | | |
| Inscriptions(s) | | | | | | | | | | | | |

Comments: This Laboratory Grown Diamond was created by Chemical Vapor Deposition (CVD) growth process and may include post-growth treatment. Type IIa

