



ELECTRONIC COPY

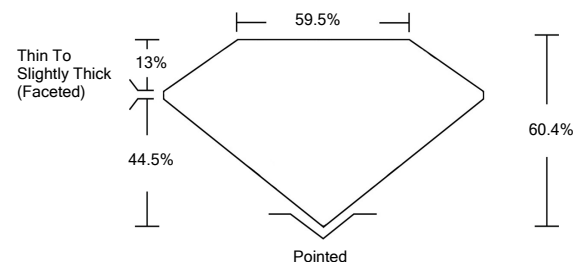
LABORATORY GROWN DIAMOND REPORT

LG526269956

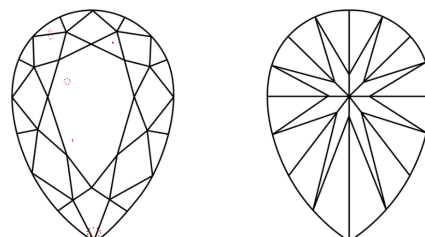
GRADING SCALES

COLOR GRADING SCALE	CL	NC	FT	VL	LT	
	COLORLESS D-F	NEAR COLORLESS G-J	FAINT K-M	VERY LIGHT N-R	LIGHT S-Z	
CLARITY (10x) GRADING SCALE	FL	IF	VVS	VS	SI	I
	FLAWLESS INTERNALLY FLAWLESS	VERY VERY SLIGHTLY INCLUDED	VERY SLIGHTLY INCLUDED	SLIGHTLY INCLUDED	INCLUDED	

PROPORTIONS

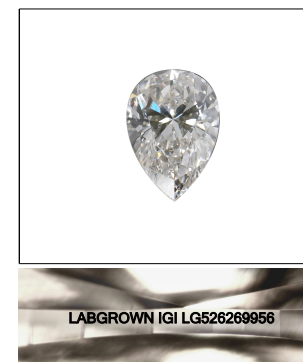


CLARITY CHARACTERISTICS



KEY TO SYMBOLS

Red symbols indicate internal characteristics. Green symbols indicate external characteristics.



LASERSCRIBESM

Sample Image Used

April 30, 2022

IGI Report Number

LG526269956

Description

LABORATORY GROWN DIAMOND

Shape and Cutting Style

PEAR BRILLIANT

Measurements

9.66 X 5.84 X 3.53 MM

GRADING RESULTS

Carat Weight

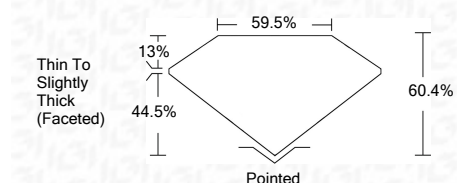
1.12 CARAT

Color Grade

F

Clarity Grade

VS 2



ADDITIONAL GRADING INFORMATION

Polish

EXCELLENT

Symmetry

EXCELLENT

Fluorescence

NONE

Inscription(s)

LABGROWN IGI LG526269956

Comments: This Laboratory Grown Diamond was created by Chemical Vapor Deposition (CVD) growth process and may include post-growth treatment. Type IIa

April 30, 2022

IGI Report Number

LG526269956

Description

LABORATORY GROWN DIAMOND

Shape and Cutting Style

PEAR BRILLIANT

Measurements

9.66 X 5.84 X 3.53 MM

GRADING RESULTS

Carat Weight

1.12 CARAT

Color Grade

F

Clarity Grade

VS 2

ADDITIONAL GRADING INFORMATION

Polish

EXCELLENT

Symmetry

EXCELLENT

Fluorescence

NONE

Inscription(s)

LABGROWN IGI LG526269956

Comments: This Laboratory Grown Diamond was created by Chemical Vapor Deposition (CVD) growth process and may include post-growth treatment. Type IIa

April 30, 2022
 IGI Report No. LG526269956
PEAR BRILLIANT
 9.66 X 5.84 X 3.53 MM
 Carat Weight
 Color Grade
 Clarity Grade
 Depth
 Table
 Girdle
 Culet
 Polish
 Symmetry
 Fluorescence
 Inscription(s)
 Comments:

1.12 CARAT
 F
 VS 2
 60.4%
 59.5%
 Thin To Slightly Thick (Faceted)
 Pointed
 EXCELLENT
 EXCELLENT
 NONE
 LABGROWN IGI LG526269956

This Laboratory Grown Diamond was created by Chemical Vapor Deposition (CVD) growth process and may include post-growth treatment. Type IIa

