



ELECTRONIC COPY

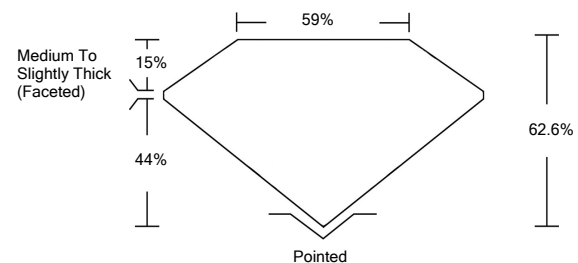
LABORATORY GROWN DIAMOND REPORT

April 25, 2022	
IGI Report Number	LG524245298
Description	LABORATORY GROWN DIAMOND
Shape and Cutting Style	OVAL BRILLIANT
Measurements	10.75 X 7.45 X 4.66 MM
GRADING RESULTS	
Carat Weight	2.33 CARATS
Color Grade	G
Clarity Grade	VS 1
ADDITIONAL GRADING INFORMATION	
Polish	EXCELLENT
Symmetry	EXCELLENT
Fluorescence	NONE
Inscription(s)	LABGROWN IGI LG524245298

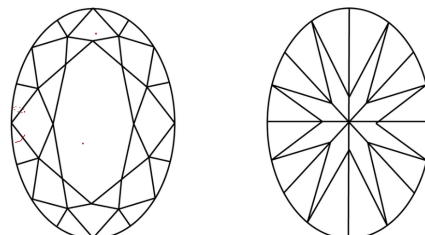
Comments: This Laboratory Grown Diamond was created by Chemical Vapor Deposition (CVD) growth process and may include post-growth treatment.
Type IIa

LG524245298

PROPORTIONS



CLARITY CHARACTERISTICS

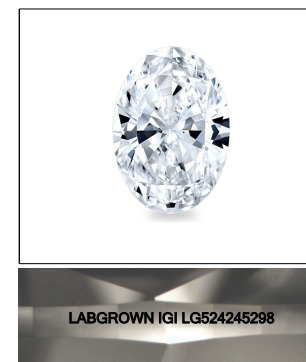


KEY TO SYMBOLS

Red symbols indicate internal characteristics.
Green symbols indicate external characteristics.

GRADING SCALES

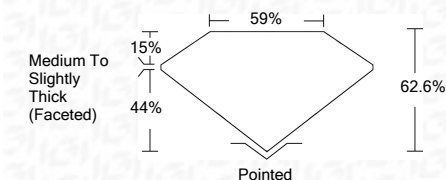
COLOR GRADING SCALE	CL	NC	FT	VLT	LT	
	COLORLESS D-F	NEAR COLORLESS G-J	FAINT K-M	VERY LIGHT N-R	LIGHT S-Z	
CLARITY (10x) GRADING SCALE	FL	IF	VVS	VS	SI	I
	FLAWLESS INTERNALLY FLAWLESS	VERY VERY SLIGHTLY INCLUDED	VERY SLIGHTLY INCLUDED	SLIGHTLY INCLUDED	INCLUDED	



LASERSCRIBESM

Sample Image Used

April 25, 2022	
IGI Report Number	LG524245298
Description	LABORATORY GROWN DIAMOND
Shape and Cutting Style	OVAL BRILLIANT
Measurements	10.75 X 7.45 X 4.66 MM
GRADING RESULTS	
Carat Weight	2.33 CARATS
Color Grade	G
Clarity Grade	VS 1



ADDITIONAL GRADING INFORMATION

Polish	EXCELLENT
Symmetry	EXCELLENT
Fluorescence	NONE
Inscription(s)	LABGROWN IGI LG524245298

Comments: This Laboratory Grown Diamond was created by Chemical Vapor Deposition (CVD) growth process and may include post-growth treatment.
Type IIa



April 25, 2022	IGI Report No. LG524245298
	OVAL BRILLIANT
	10.75 X 7.45 X 4.66 MM
	2.33 CARATS
	G
	VS 1
	62.6%
	59%
	Medium To Slightly Thick (Faceted)
	Pointed
	EXCELLENT
	EXCELLENT
	NONE
	LABGROWN IGI LG524245298
	Comments:
	This Laboratory Grown Diamond was created by Chemical Vapor Deposition (CVD) growth process and may include post-growth treatment. Type IIa

