

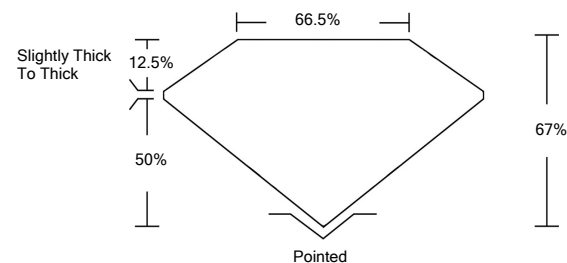


ELECTRONIC COPY

LABORATORY GROWN DIAMOND REPORT

LG524239679

PROPORTIONS



GRADING SCALES

COLOR GRADING SCALE	CL	NC	FT	VL	LT	
	COLORLESS D-F	NEAR COLORLESS G-J	FAINT K-M	VERY LIGHT N-R	LIGHT S-Z	
CLARITY (10x) GRADING SCALE	FL	IF	VVS	VS	SI	I
	FLAWLESS INTERNALLY FLAWLESS	VERY VERY SLIGHTLY INCLUDED	VERY SLIGHTLY INCLUDED	SLIGHTLY INCLUDED	INCLUDED	

April 22, 2022

IGI Report Number

LG524239679

Description

**LABORATORY GROWN
DIAMOND**

Shape and Cutting Style

**CUT CORNERED
RECTANGULAR MODIFIED
BRILLIANT**

Measurements

9.97 X 7.07 X 4.74 MM

GRADING RESULTS

Carat Weight

3.00 CARATS

Color Grade

H

Clarity Grade

VS 2

April 22, 2022

IGI Report Number

LG524239679

Description

**LABORATORY GROWN
DIAMOND**

Shape and Cutting Style

**CUT CORNERED
RECTANGULAR MODIFIED
BRILLIANT**

Measurements

9.97 X 7.07 X 4.74 MM

GRADING RESULTS

Carat Weight

3.00 CARATS

Color Grade

H

Clarity Grade

VS 2

ADDITIONAL GRADING INFORMATION

Polish

EXCELLENT

Symmetry

EXCELLENT

Fluorescence

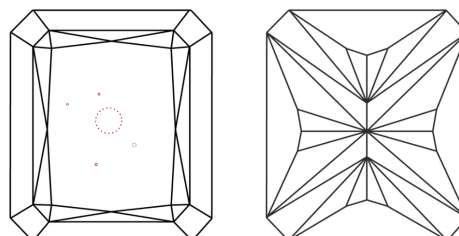
NONE

Inscription(s)

LABGROWN IGI LG524239679

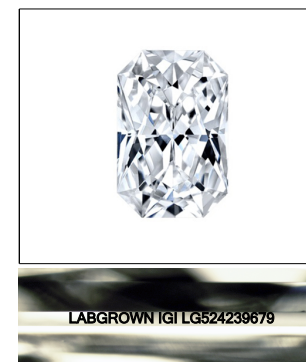
Comments: This Laboratory Grown Diamond was created by Chemical Vapor Deposition (CVD) growth process and may include post-growth treatment. Type IIa

CLARITY CHARACTERISTICS



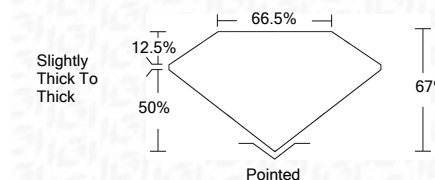
KEY TO SYMBOLS

Red symbols indicate internal characteristics.
Green symbols indicate external characteristics.



LASERSCRIBESM

Sample Image Used



ADDITIONAL GRADING INFORMATION

Polish

EXCELLENT

Symmetry

EXCELLENT

Fluorescence

NONE

Inscription(s)

LABGROWN IGI LG524239679

Comments: This Laboratory Grown Diamond was created by Chemical Vapor Deposition (CVD) growth process and may include post-growth treatment. Type IIa



IGI



IGI Report No. LG524239679	CUT CORNERED RECT. MODIFIED BRILLIANT	9.97 X 7.07 X 4.74 MM	3.00 CARATS	H	VS 2	67%	66.5%	Slightly Thick To Thick	Pointed	EXCELLENT	EXCELLENT	NONE	LABGROWN IGI LG524239679
Color Grade	Clarity Grade	Depth	Table	Girdle	Culet	Polish	Symmetry	Fluorescence	Inscription(s)	Comments:	This Laboratory Grown Diamond was created by Chemical Vapor Deposition (CVD) growth process and may include post-growth treatment. Type IIa		

