

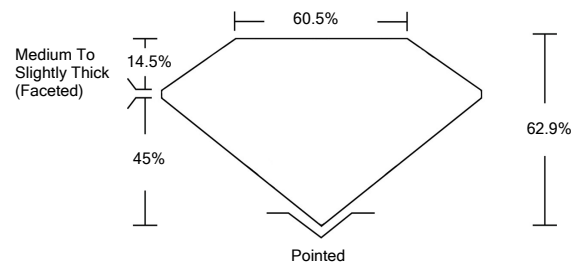


ELECTRONIC COPY

LABORATORY GROWN DIAMOND REPORT

LG523263025

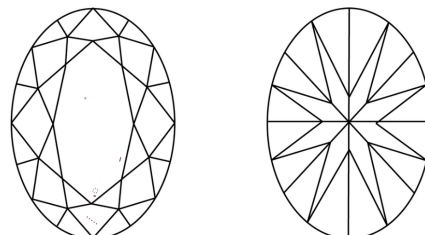
PROPORTIONS



GRADING SCALES

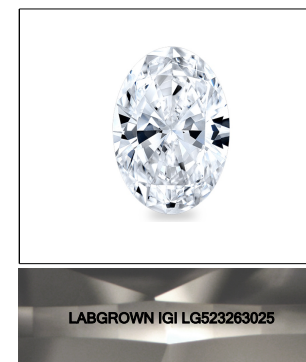
COLOR GRADING SCALE	CL	NC	FT	VL	LT	
	COLORLESS D-F	NEAR COLORLESS G-J	FAINT K-M	VERY LIGHT N-R	LIGHT S-Z	
CLARITY (10x) GRADING SCALE	FL	IF	VVS	VS	SI	I
	FLAWLESS INTERNALLY FLAWLESS	VERY VERY SLIGHTLY INCLUDED	VERY SLIGHTLY INCLUDED	SLIGHTLY INCLUDED	INCLUDED	

CLARITY CHARACTERISTICS



KEY TO SYMBOLS

Red symbols indicate internal characteristics.
Green symbols indicate external characteristics.



LASERSCRIBESM
Sample Image Used

March 30, 2022

IGI Report Number **LG523263025**

Description **LABORATORY GROWN DIAMOND**

Shape and Cutting Style **OVAL BRILLIANT**

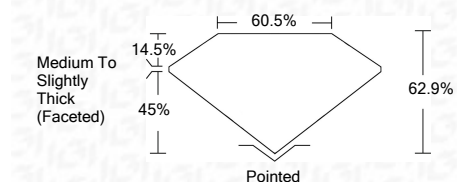
Measurements **12.22 X 8.66 X 5.45 MM**

GRADING RESULTS

Carat Weight **3.59 CARATS**

Color Grade **H**

Clarity Grade **VS 1**



ADDITIONAL GRADING INFORMATION

Polish **EXCELLENT**

Symmetry **EXCELLENT**

Fluorescence **NONE**

Inscription(s) **LABGROWN IGI LG523263025**

Comments: This Laboratory Grown Diamond was created by Chemical Vapor Deposition (CVD) growth process and may include post-growth treatment.
Type IIa



IGI Report No. LG523263025	3.59 CARATS	H	VS 1	62.9%	60.5%	Pointed	EXCELLENT	EXCELLENT	NONE	LABGROWN IGI LG523263025
OVAL BRILLIANT	12.22 X 8.66 X 5.45 MM					Medium To Slightly Thick (Faceted)				
Carat Weight										
Color Grade										
Clarity Grade										
Depth										
Table										
Girdle										
Culet										
Polish										
Symmetry										
Fluorescence										
Inscription(s)										
Comments:	This Laboratory Grown Diamond was created by Chemical Vapor Deposition (CVD) growth process and may include post-growth treatment. Type IIa									

