

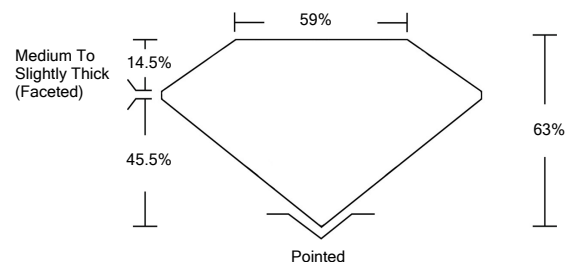


ELECTRONIC COPY

LABORATORY GROWN DIAMOND REPORT

LG522252895

PROPORTIONS



GRADING SCALES

COLOR GRADING SCALE	CL	NC	FT	VLT	LT	
	COLORLESS D-F	NEAR COLORLESS G-J	FAINT K-M	VERY LIGHT N-R	LIGHT S-Z	
CLARITY (10x) GRADING SCALE	FL	IF	VVS	VS	SI	I
	FLAWLESS INTERNALLY FLAWLESS	VERY VERY SLIGHTLY INCLUDED	VERY SLIGHTLY INCLUDED	SLIGHTLY INCLUDED	INCLUDED	

March 29, 2022

IGI Report Number

LG522252895

Description

LABORATORY GROWN DIAMOND

Shape and Cutting Style

OVAL BRILLIANT

Measurements

10.99 X 7.55 X 4.76 MM

GRADING RESULTS

Carat Weight

2.44 CARATS

Color Grade

G

Clarity Grade

VS 1

March 29, 2022

IGI Report Number

LG522252895

Description

LABORATORY GROWN DIAMOND

Shape and Cutting Style

OVAL BRILLIANT

Measurements

10.99 X 7.55 X 4.76 MM

GRADING RESULTS

Carat Weight

2.44 CARATS

Color Grade

G

Clarity Grade

VS 1

ADDITIONAL GRADING INFORMATION

Polish

EXCELLENT

Symmetry

EXCELLENT

Fluorescence

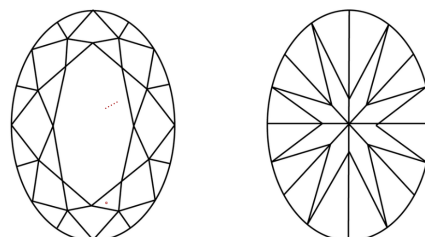
NONE

Inscription(s)

LABGROWN IGI LG522252895

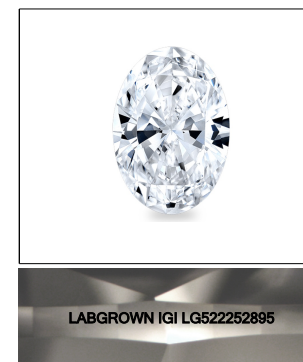
Comments: This Laboratory Grown Diamond was created by Chemical Vapor Deposition (CVD) growth process and may include post-growth treatment.
Type IIa

CLARITY CHARACTERISTICS



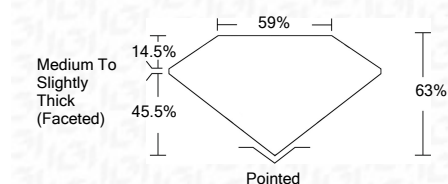
KEY TO SYMBOLS

Red symbols indicate internal characteristics.
Green symbols indicate external characteristics.



LASERSCRIBESM

Sample Image Used



ADDITIONAL GRADING INFORMATION

Polish

EXCELLENT

Symmetry

EXCELLENT

Fluorescence

NONE

Inscription(s)

LABGROWN IGI LG522252895

Comments: This Laboratory Grown Diamond was created by Chemical Vapor Deposition (CVD) growth process and may include post-growth treatment.
Type IIa



IGI

IGI Report No. LG522252895	2.44 CARATS	G
OVAL BRILLIANT	VS 1	EXCELLENT
10.99 X 7.55 X 4.76 MM	63%	EXCELLENT
Carat Weight	59%	EXCELLENT
Color Grade	Medium To Slightly Thick (Faceted)	EXCELLENT
Clarity Grade	Pointed	EXCELLENT
Depth	Polish	EXCELLENT
Table	Symmetry	EXCELLENT
Girdle	Fluorescence	NONE
Culet	Inscription(s)	LABGROWN IGI LG522252895
Polish	Comments:	This Laboratory Grown Diamond was created by Chemical Vapor Deposition (CVD) growth process and may include post-growth treatment. Type IIa