

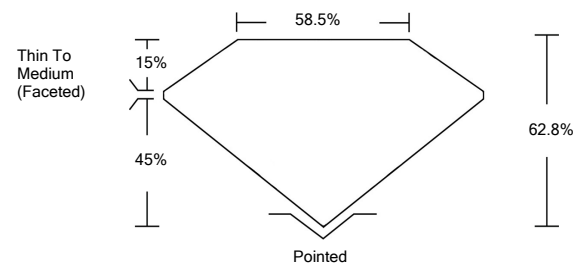


ELECTRONIC COPY

LABORATORY GROWN DIAMOND REPORT

LG522252886

PROPORTIONS



GRADING SCALES

| | | | | | | |
|-----------------------------|------------------------------|-----------------------------|------------------------|-------------------|-----------|---|
| COLOR GRADING SCALE | CL | NC | FT | VLT | LT | |
| | COLORLESS D-F | NEAR COLORLESS G-J | FAINT K-M | VERY LIGHT N-R | LIGHT S-Z | |
| CLARITY (10x) GRADING SCALE | FL | IF | VVS | VS | SI | I |
| | FLAWLESS INTERNALLY FLAWLESS | VERY VERY SLIGHTLY INCLUDED | VERY SLIGHTLY INCLUDED | SLIGHTLY INCLUDED | INCLUDED | |

| | |
|-------------------------|---------------------------------|
| April 1, 2022 | |
| IGI Report Number | LG522252886 |
| Description | LABORATORY GROWN DIAMOND |
| Shape and Cutting Style | OVAL BRILLIANT |
| Measurements | 10.83 X 7.48 X 4.70 MM |

GRADING RESULTS

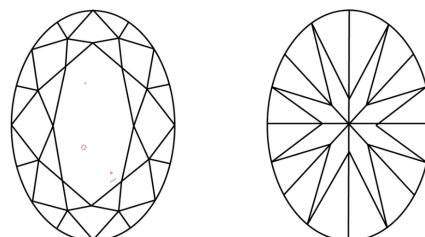
| | |
|---------------|--------------------|
| Carat Weight | 2.34 CARATS |
| Color Grade | E |
| Clarity Grade | VS 1 |

ADDITIONAL GRADING INFORMATION

| | |
|----------------|---------------------------------|
| Polish | EXCELLENT |
| Symmetry | EXCELLENT |
| Fluorescence | NONE |
| Inscription(s) | LABGROWN IGI LG522252886 |

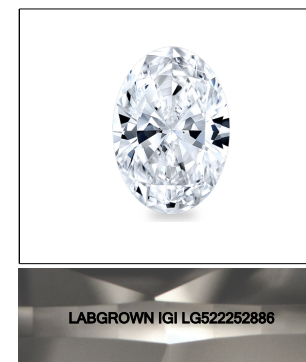
Comments: This Laboratory Grown Diamond was created by Chemical Vapor Deposition (CVD) growth process and may include post-growth treatment.
Type IIa

CLARITY CHARACTERISTICS



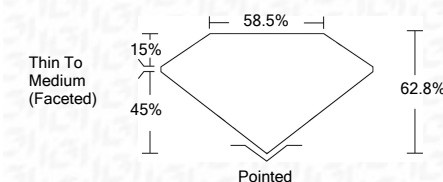
KEY TO SYMBOLS

Red symbols indicate internal characteristics.
Green symbols indicate external characteristics.



LASERSCRIBESM
Sample Image Used

| | |
|-------------------------|---------------------------------|
| April 1, 2022 | |
| IGI Report Number | LG522252886 |
| Description | LABORATORY GROWN DIAMOND |
| Shape and Cutting Style | OVAL BRILLIANT |
| Measurements | 10.83 X 7.48 X 4.70 MM |
| GRADING RESULTS | |
| Carat Weight | 2.34 CARATS |
| Color Grade | E |
| Clarity Grade | VS 1 |



ADDITIONAL GRADING INFORMATION

| | |
|----------------|---------------------------------|
| Polish | EXCELLENT |
| Symmetry | EXCELLENT |
| Fluorescence | NONE |
| Inscription(s) | LABGROWN IGI LG522252886 |

Comments: This Laboratory Grown Diamond was created by Chemical Vapor Deposition (CVD) growth process and may include post-growth treatment.
Type IIa



IGI

| | |
|----------------------------|---------------------------------|
| April 1, 2022 | |
| IGI Report No. LG522252886 | |
| OVAL BRILLIANT | |
| 10.83 X 7.48 X 4.70 MM | |
| Carat Weight | 2.34 CARATS |
| Color Grade | E |
| Clarity Grade | VS 1 |
| Depth | 62.8% |
| Table | 15.0% |
| Grade | Thin To Medium (Faceted) |
| Culet | Pointed |
| Polish | EXCELLENT |
| Symmetry | EXCELLENT |
| Fluorescence | NONE |
| Inscription(s) | LABGROWN IGI LG522252886 |
| Comments: | |

This Laboratory Grown Diamond was created by Chemical Vapor Deposition (CVD) growth process and may include post-growth treatment.
Type IIa