



ELECTRONIC COPY

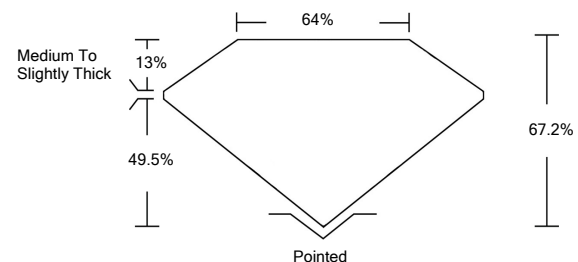
LABORATORY GROWN DIAMOND REPORT

April 1, 2022	
IGI Report Number	LG522252881
Description	LABORATORY GROWN DIAMOND
Shape and Cutting Style	CUT CORNERED RECTANGULAR MODIFIED BRILLIANT
Measurements	8.59 X 6.13 X 4.12 MM
GRADING RESULTS	
Carat Weight	1.90 CARAT
Color Grade	G
Clarity Grade	VS 1
ADDITIONAL GRADING INFORMATION	
Polish	EXCELLENT
Symmetry	EXCELLENT
Fluorescence	NONE
Inscription(s)	LABGROWN IGI LG522252881

Comments: This Laboratory Grown Diamond was created by Chemical Vapor Deposition (CVD) growth process and may include post-growth treatment. Type IIa

LG522252881

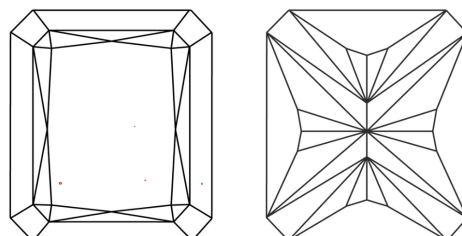
PROPORTIONS



GRADING SCALES

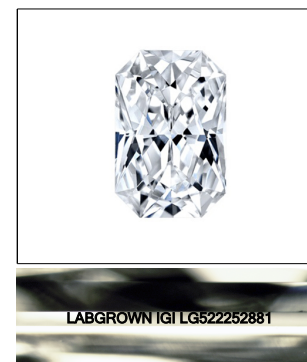
COLOR GRADING SCALE	CL	NC	FT	VL	LT	
	COLORLESS D-F	NEAR COLORLESS G-J	FAINT K-M	VERY LIGHT N-R	LIGHT S-Z	
CLARITY (10x) GRADING SCALE	FL	IF	VVS	VS	SI	I
	FLAWLESS INTERNALLY FLAWLESS	VERY VERY SLIGHTLY INCLUDED	VERY SLIGHTLY INCLUDED	SLIGHTLY INCLUDED	INCLUDED	

CLARITY CHARACTERISTICS



KEY TO SYMBOLS

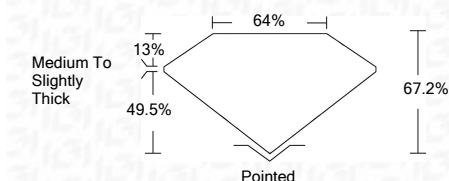
Red symbols indicate internal characteristics.
Green symbols indicate external characteristics.



LASERSCRIBESM

Sample Image Used

April 1, 2022	
IGI Report Number	LG522252881
Description	LABORATORY GROWN DIAMOND
Shape and Cutting Style	CUT CORNERED RECTANGULAR MODIFIED BRILLIANT
Measurements	8.59 X 6.13 X 4.12 MM
GRADING RESULTS	
Carat Weight	1.90 CARAT
Color Grade	G
Clarity Grade	VS 1



ADDITIONAL GRADING INFORMATION

Polish	EXCELLENT
Symmetry	EXCELLENT
Fluorescence	NONE
Inscription(s)	LABGROWN IGI LG522252881

Comments: This Laboratory Grown Diamond was created by Chemical Vapor Deposition (CVD) growth process and may include post-growth treatment. Type IIa



IGI

April 1, 2022	
IGI Report No. LG522252881	
CUT CORNERED RECT. MODIFIED BRILLIANT	
Measurements 8.59 X 6.13 X 4.12 MM	
Carat Weight 1.90 CARAT	
Color Grade G	
Clarity Grade VS 1	
Depth 67.2%	
Table 64%	
Grade Medium To Slightly Thick	
Culet Pointed	
Polish EXCELLENT	
Symmetry EXCELLENT	
Fluorescence NONE	
Inscription(s) LABGROWN IGI LG522252881	
Comments: This Laboratory Grown Diamond was created by Chemical Vapor Deposition (CVD) growth process and may include post-growth treatment. Type IIa	