

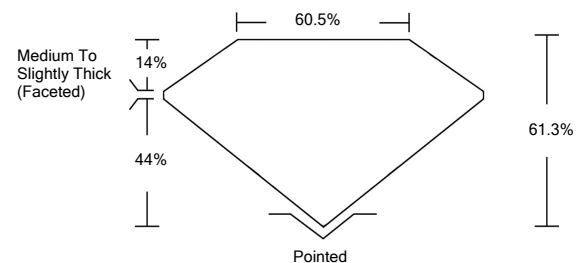


ELECTRONIC COPY

LABORATORY GROWN DIAMOND REPORT

LG522239939

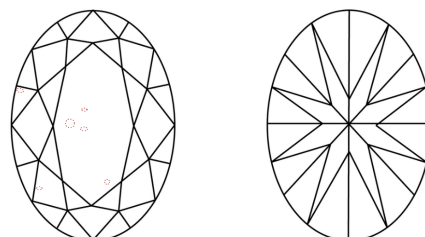
PROPORTIONS



GRADING SCALES

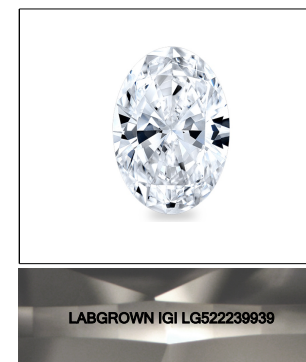
COLOR GRADING SCALE	CL	NC	FT	VLT	LT	
	COLORLESS D-F	NEAR COLORLESS G-J	FAINT K-M	VERY LIGHT N-R	LIGHT S-Z	
CLARITY (10x) GRADING SCALE	FL	IF	VVS	VS	SI	I
	FLAWLESS INTERNALLY FLAWLESS	VERY VERY SLIGHTLY INCLUDED	VERY SLIGHTLY INCLUDED	SLIGHTLY INCLUDED	INCLUDED	

CLARITY CHARACTERISTICS



KEY TO SYMBOLS

Red symbols indicate internal characteristics.
Green symbols indicate external characteristics.



March 31, 2022

IGI Report Number **LG522239939**

Description **LABORATORY GROWN DIAMOND**

Shape and Cutting Style **OVAL BRILLIANT**

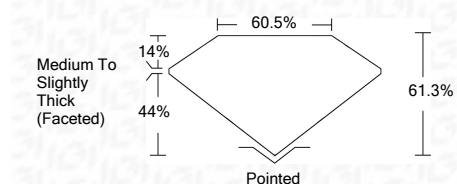
Measurements **11.94 X 8.44 X 5.17 MM**

GRADING RESULTS

Carat Weight **3.17 CARATS**

Color Grade **I**

Clarity Grade **VS 1**



ADDITIONAL GRADING INFORMATION

Polish **EXCELLENT**

Symmetry **EXCELLENT**

Fluorescence **NONE**

Inscription(s) **LABGROWN IGI LG522239939**

Comments: This Laboratory Grown Diamond was created by Chemical Vapor Deposition (CVD) growth process and may include post-growth treatment.
Type IIa

March 31, 2022

IGI Report Number **LG522239939**

Description **LABORATORY GROWN DIAMOND**

Shape and Cutting Style **OVAL BRILLIANT**

Measurements **11.94 X 8.44 X 5.17 MM**

GRADING RESULTS

Carat Weight **3.17 CARATS**

Color Grade **I**

Clarity Grade **VS 1**

ADDITIONAL GRADING INFORMATION

Polish **EXCELLENT**

Symmetry **EXCELLENT**

Fluorescence **NONE**

Inscription(s) **LABGROWN IGI LG522239939**

Comments: This Laboratory Grown Diamond was created by Chemical Vapor Deposition (CVD) growth process and may include post-growth treatment.
Type IIa



IGI

IGI Report No. LG522239939	3.17 CARATS	I
OVAL BRILLIANT	VS 1	61.3%
11.94 X 8.44 X 5.17 MM	60.5%	Medium To Slightly Thick (Faceted)
Carat Weight		Pointed
Color Grade		EXCELLENT
Clarity Grade		EXCELLENT
Depth		NONE
Table		LABGROWN IGI LG522239939
Girdle		Comments:
Culet		This Laboratory Grown Diamond was created by Chemical Vapor Deposition (CVD) growth process and may include post-growth treatment. Type IIa
Polish		
Symmetry		
Fluorescence		
Inscription(s)		