



**ELECTRONIC COPY**

**LABORATORY GROWN DIAMOND REPORT**

March 23, 2022  
IGI Report Number **LG522223584**

Description **LABORATORY GROWN  
DIAMOND**  
Shape and Cutting Style **ROUND BRILLIANT**  
Measurements **11.07 - 11.12 X 6.68 MM**

**GRADING RESULTS**

Carat Weight **5.01 CARATS**  
Color Grade **G**  
Clarity Grade **VS 2**  
Cut Grade **IDEAL**

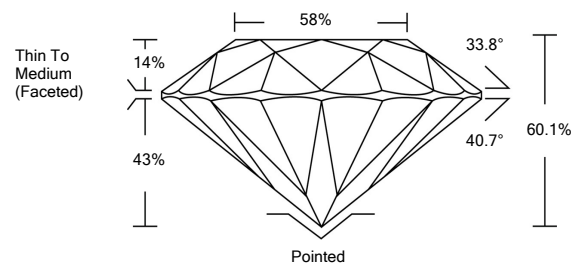
**ADDITIONAL GRADING INFORMATION**

Polish **EXCELLENT**  
Symmetry **EXCELLENT**  
Fluorescence **NONE**  
Inscription(s) **LABGROWN IGI LG522223584**

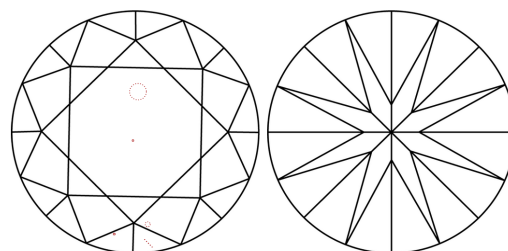
Comments: This Laboratory Grown Diamond was created by Chemical Vapor Deposition (CVD) growth process and may include post-growth treatment.  
Type IIa

LG522223584

**PROPORTIONS**



**CLARITY CHARACTERISTICS**

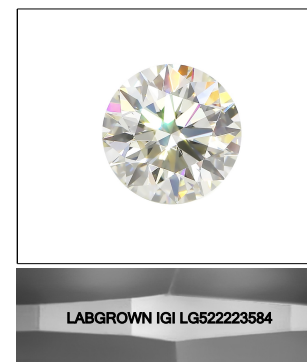


**KEY TO SYMBOLS**

Red symbols indicate internal characteristics.  
Green symbols indicate external characteristics.

**GRADING SCALES**

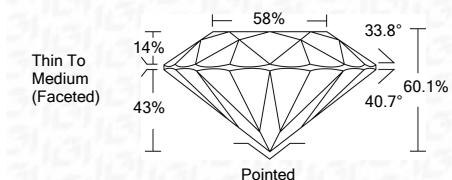
COLOR GRADING SCALE	CL	NC	FT	VLT	LT	
	COLORLESS D-F	NEAR COLORLESS G-J	FAINT K-M	VERY LIGHT N-R	LIGHT S-Z	
CLARITY (10x) GRADING SCALE	FL	IF	VVS	VS	SI	I
	FLAWLESS INTERNALLY FLAWLESS	VERY VERY SLIGHTLY INCLUDED	VERY SLIGHTLY INCLUDED	SLIGHTLY INCLUDED	INCLUDED	



**LASERSCRIBE<sup>SM</sup>**

Sample Image Used

March 23, 2022  
IGI Report Number **LG522223584**  
Description **LABORATORY GROWN  
DIAMOND**  
Shape and Cutting Style **ROUND BRILLIANT**  
Measurements **11.07 - 11.12 X 6.68 MM**  
**GRADING RESULTS**  
Carat Weight **5.01 CARATS**  
Color Grade **G**  
Clarity Grade **VS 2**  
Cut Grade **IDEAL**



**ADDITIONAL GRADING INFORMATION**

Polish **EXCELLENT**  
Symmetry **EXCELLENT**  
Fluorescence **NONE**  
Inscription(s) **LABGROWN IGI LG522223584**

Comments: This Laboratory Grown Diamond was created by Chemical Vapor Deposition (CVD) growth process and may include post-growth treatment.  
Type IIa



**IGI**

March 23, 2022  
IGI Report No. **LG522223584**  
**ROUND BRILLIANT**  
11.07 - 11.12 X 6.68 MM  
Carat Weight **5.01 CARATS**  
Color Grade **G**  
Clarity Grade **VS 2**  
Cut Grade **IDEAL**  
Depth **60.1%**  
Table **58%**  
Girdle **Thin To Medium (Faceted)**  
Culet **Pointed**  
Polish **EXCELLENT**  
Symmetry **EXCELLENT**  
Fluorescence **NONE**  
Inscription(s) **LABGROWN IGI LG522223584**  
Comments: This Laboratory Grown Diamond was created by Chemical Vapor Deposition (CVD) growth process and may include post-growth treatment.  
Type IIa