

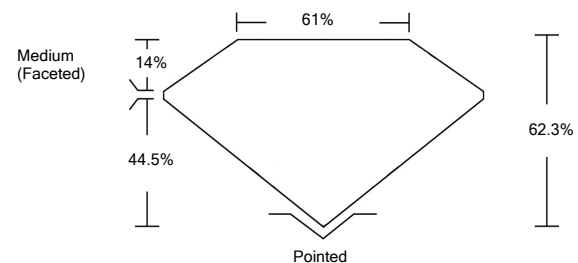


ELECTRONIC COPY

LABORATORY GROWN DIAMOND REPORT

LG520290009

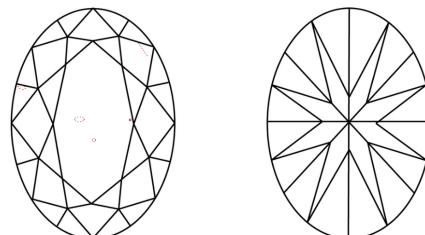
PROPORTIONS



GRADING SCALES

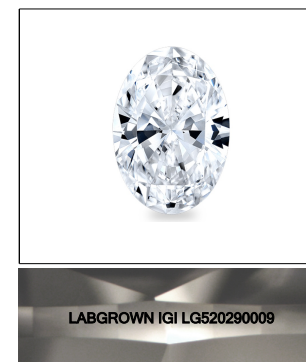
COLOR GRADING SCALE	CL	NC	FT	VL	LT	
	COLORLESS D-F	NEAR COLORLESS G-J	FAINT K-M	VERY LIGHT N-R	LIGHT S-Z	
CLARITY (10x) GRADING SCALE	FL	IF	VVS	VS	SI	I
	FLAWLESS INTERNALLY FLAWLESS	VERY VERY SLIGHTLY INCLUDED	VERY SLIGHTLY INCLUDED	SLIGHTLY INCLUDED		INCLUDED

CLARITY CHARACTERISTICS



KEY TO SYMBOLS

Red symbols indicate internal characteristics.
Green symbols indicate external characteristics.



LASERSCRIBESM
Sample Image Used

March 14, 2022

IGI Report Number

LG520290009

Description

**LABORATORY GROWN
DIAMOND**

Shape and Cutting Style

OVAL BRILLIANT

Measurements

12.02 X 8.56 X 5.33 MM

GRADING RESULTS

Carat Weight

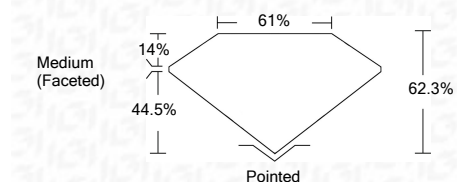
3.37 CARATS

Color Grade

F

Clarity Grade

VS 1



ADDITIONAL GRADING INFORMATION

Polish

EXCELLENT

Symmetry

EXCELLENT

Fluorescence

NONE

Inscription(s)

LABGROWN IGI LG520290009

Comments: This Laboratory Grown Diamond was created by Chemical Vapor Deposition (CVD) growth process and may include post-growth treatment.
Type IIa



IGI



IGI Report No. LG520290009	3.37 CARATS	F	Pointed
OVAL BRILLIANT	VS 1	EXCELLENT	EXCELLENT
12.02 X 8.56 X 5.33 MM	62.3%	EXCELLENT	EXCELLENT
Carat Weight	61%	NONE	NONE
Color Grade	Medium (Faceted)	LABGROWN IGI	LABGROWN IGI
Clarity Grade		LG520290009	
Depth			
Table			
Girdle			
Culet			
Polish			
Symmetry			
Fluorescence			
Inscription(s)			
Comments:			

This Laboratory Grown Diamond was created by Chemical Vapor Deposition (CVD) growth process and may include post-growth treatment.
Type IIa