



ELECTRONIC COPY

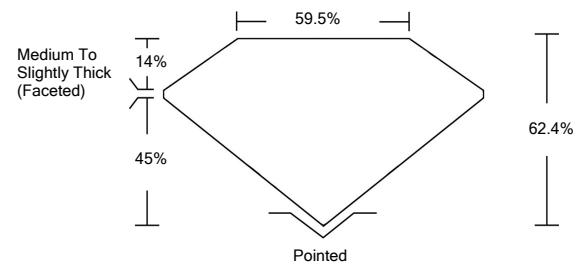
LABORATORY GROWN DIAMOND REPORT

March 14, 2022	
IGI Report Number	LG520289980
Description	LABORATORY GROWN DIAMOND
Shape and Cutting Style	OVAL BRILLIANT
Measurements	11.12 X 7.93 X 4.95 MM
GRADING RESULTS	
Carat Weight	2.68 CARATS
Color Grade	E
Clarity Grade	VS 1
ADDITIONAL GRADING INFORMATION	
Polish	EXCELLENT
Symmetry	EXCELLENT
Fluorescence	NONE
Inscription(s)	LABGROWN IGI LG520289980

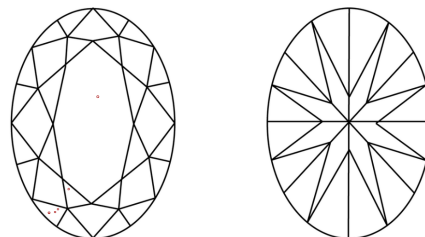
Comments: This Laboratory Grown Diamond was created by Chemical Vapor Deposition (CVD) growth process and may include post-growth treatment.
Type IIa

LG520289980

PROPORTIONS



CLARITY CHARACTERISTICS

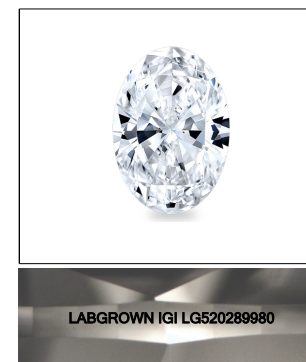


KEY TO SYMBOLS

Red symbols indicate internal characteristics.
Green symbols indicate external characteristics.

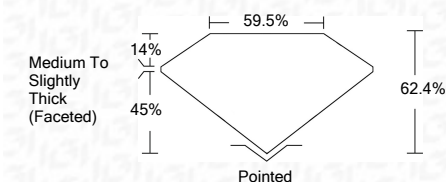
GRADING SCALES

COLOR GRADING SCALE	CL	NC	FT	VLT	LT	
	COLORLESS D-F	NEAR COLORLESS G-J	FAINT K-M	VERY LIGHT N-R	LIGHT S-Z	
CLARITY (10x) GRADING SCALE	FL	IF	VVS	VS	SI	I
	FLAWLESS INTERNALLY FLAWLESS	VERY VERY SLIGHTLY INCLUDED	VERY SLIGHTLY INCLUDED	SLIGHTLY INCLUDED	INCLUDED	



LASERSCRIBESM
Sample Image Used

March 14, 2022	
IGI Report Number	LG520289980
Description	LABORATORY GROWN DIAMOND
Shape and Cutting Style	OVAL BRILLIANT
Measurements	11.12 X 7.93 X 4.95 MM
GRADING RESULTS	
Carat Weight	2.68 CARATS
Color Grade	E
Clarity Grade	VS 1



ADDITIONAL GRADING INFORMATION	
Polish	EXCELLENT
Symmetry	EXCELLENT
Fluorescence	NONE
Inscription(s)	LABGROWN IGI LG520289980

Comments: This Laboratory Grown Diamond was created by Chemical Vapor Deposition (CVD) growth process and may include post-growth treatment.
Type IIa



March 14, 2022	
IGI Report No. LG520289980	
OVAL BRILLIANT	
11.12 X 7.93 X 4.95 MM	
2.68 CARATS	
E	
VS 1	
62.4%	
59.5%	
Medium To Slightly Thick (Faceted)	
Pointed	
EXCELLENT	
EXCELLENT	
NONE	
LABGROWN IGI LG520289980	
Comments:	
This Laboratory Grown Diamond was created by Chemical Vapor Deposition (CVD) growth process and may include post-growth treatment. Type IIa	