

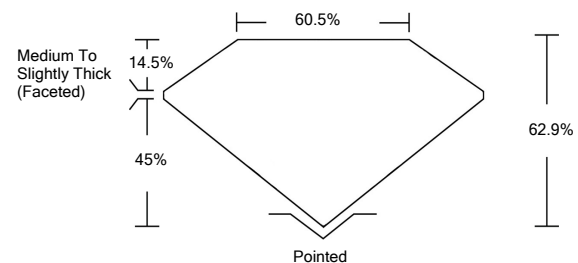


ELECTRONIC COPY

LABORATORY GROWN DIAMOND REPORT

LG520273935

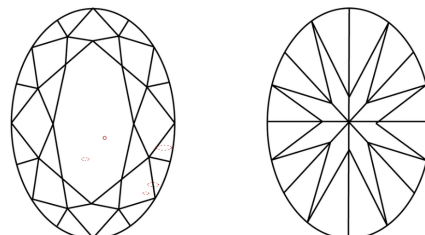
PROPORTIONS



GRADING SCALES

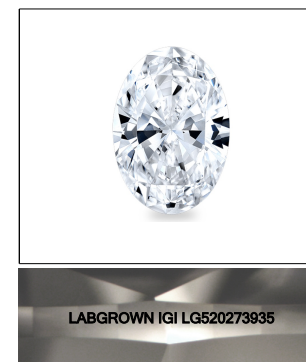
| | | | | | | |
|-----------------------------|------------------------------|-----------------------------|------------------------|-------------------|-----------|---|
| COLOR GRADING SCALE | CL | NC | FT | VL | LT | |
| | COLORLESS D-F | NEAR COLORLESS G-J | FAINT K-M | VERY LIGHT N-R | LIGHT S-Z | |
| CLARITY (10x) GRADING SCALE | FL | IF | VVS | VS | SI | I |
| | FLAWLESS INTERNALLY FLAWLESS | VERY VERY SLIGHTLY INCLUDED | VERY SLIGHTLY INCLUDED | SLIGHTLY INCLUDED | INCLUDED | |

CLARITY CHARACTERISTICS



KEY TO SYMBOLS

Red symbols indicate internal characteristics.
Green symbols indicate external characteristics.



LASERSCRIBESM
Sample Image Used

March 10, 2022

IGI Report Number **LG520273935**

Description **LABORATORY GROWN DIAMOND**

Shape and Cutting Style **OVAL BRILLIANT**

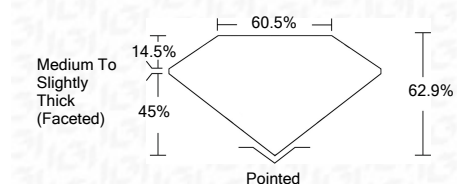
Measurements **11.74 X 8.31 X 5.23 MM**

GRADING RESULTS

Carat Weight **3.16 CARATS**

Color Grade **G**

Clarity Grade **VS 2**



ADDITIONAL GRADING INFORMATION

Polish **EXCELLENT**

Symmetry **EXCELLENT**

Fluorescence **NONE**

Inscription(s) **LABGROWN IGI LG520273935**

Comments: This Laboratory Grown Diamond was created by Chemical Vapor Deposition (CVD) growth process and may include post-growth treatment.
Type IIa

| | |
|---------------------------------------|---------------------------------|
| March 10, 2022 | |
| IGI Report Number | LG520273935 |
| Description | LABORATORY GROWN DIAMOND |
| Shape and Cutting Style | OVAL BRILLIANT |
| Measurements | 11.74 X 8.31 X 5.23 MM |
| GRADING RESULTS | |
| Carat Weight | 3.16 CARATS |
| Color Grade | G |
| Clarity Grade | VS 2 |
| ADDITIONAL GRADING INFORMATION | |
| Polish | EXCELLENT |
| Symmetry | EXCELLENT |
| Fluorescence | NONE |
| Inscription(s) | LABGROWN IGI LG520273935 |

Comments: This Laboratory Grown Diamond was created by Chemical Vapor Deposition (CVD) growth process and may include post-growth treatment.
Type IIa



| | |
|----------------------------|--|
| March 10, 2022 | IGI Report No. LG520273935 |
| IGI Report No. LG520273935 | OVAL BRILLIANT |
| 11.74 X 8.31 X 5.23 MM | 3.16 CARATS |
| Carat Weight | G |
| Color Grade | VS 2 |
| Clarity Grade | 62.9% |
| Depth | 60.5% |
| Table | Medium To Slightly Thick (Faceted) |
| Girdle | Pointed |
| Culet | EXCELLENT |
| Polish | EXCELLENT |
| Symmetry | EXCELLENT |
| Fluorescence | NONE |
| Inscription(s) | LABGROWN IGI LG520273935 |
| Comments: | This Laboratory Grown Diamond was created by Chemical Vapor Deposition (CVD) growth process and may include post-growth treatment. Type IIa |