



**INTERNATIONAL
GEMOLOGICAL
INSTITUTE**

LABORATORY GROWN DIAMOND REPORT

IGI LABORATORY GROWN DIAMOND IDENTIFICATION REPORT

February 16, 2022
 IGI Report Number LG517283055
 Description LABORATORY GROWN DIAMOND
 Shape and Cutting Style PEAR BRILLIANT
 Measurements 8.51 X 5.14 X 3.13 MM

GRADING RESULTS

Carat Weight 0.77 CARAT
 Color Grade H
 Clarity Grade VS 2

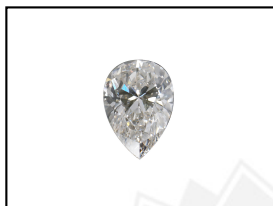
ADDITIONAL GRADING INFORMATION

Polish EXCELLENT
 Symmetry EXCELLENT
 Fluorescence NONE
 Inscription(s) LABGROWN IGI LG517283055

Comments: This Laboratory Grown Diamond was created by Chemical Vapor Deposition (CVD) growth process and may include post-growth treatment. Type IIa

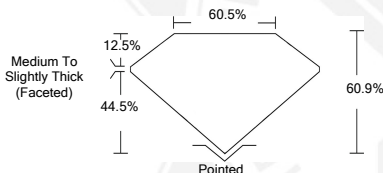
**ELECTRONIC COPY LABORATORY GROWN
DIAMOND REPORT**

LG517283055



LABGROWN IGI LG517283055

LASERSCRIBESM
Sample Images Used



**IGI LABORATORY GROWN
DIAMOND ID REPORT**

February 16, 2022
 IGI Report Number **LG517283055**
PEAR BRILLIANT
8.51 X 5.14 X 3.13 MM
 Carat Weight 0.77 CARAT
 Color Grade H
 Clarity Grade VS 2
 Polish EXCELLENT
 Symmetry EXCELLENT
 Fluorescence NONE
 Inscription(s) LABGROWN IGI
 LG517283055

Comments: This Laboratory Grown Diamond was created by Chemical Vapor Deposition (CVD) growth process and may include post-growth treatment. Type IIa

**IGI LABORATORY GROWN
DIAMOND ID REPORT**

February 16, 2022
 IGI Report Number **LG517283055**
PEAR BRILLIANT
8.51 X 5.14 X 3.13 MM
 Carat Weight 0.77 CARAT
 Color Grade H
 Clarity Grade VS 2
 Polish EXCELLENT
 Symmetry EXCELLENT
 Fluorescence NONE
 Inscription(s) LABGROWN IGI
 LG517283055

Comments: This Laboratory Grown Diamond was created by Chemical Vapor Deposition (CVD) growth process and may include post-growth treatment. Type IIa

THIS DOCUMENT WAS PRODUCED WITH THE FOLLOWING SECURITY MEASURES: SPECIAL DOCUMENT PAPER, INK SCREENS, WATERMARK, BACKGROUND DESIGN, HOLOGRAM AND OTHER SECURITY FEATURES NOT LISTED AND DO EXCEED DOCUMENT SECURITY INDUSTRY GUIDELINES.

For Terms & Conditions and to verify this report, please visit www.igi.org