



ELECTRONIC COPY

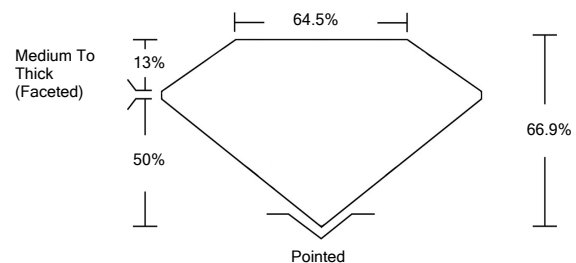
LG514266674

LABORATORY GROWN DIAMOND REPORT

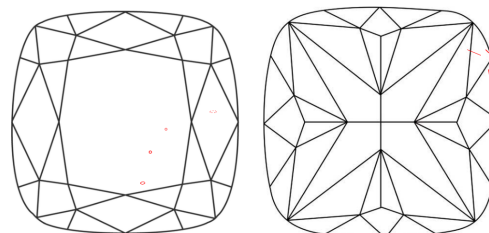
GRADING SCALES

COLOR GRADING SCALE	CL	NC	FT	VLT	LT	
	COLORLESS D-F	NEAR COLORLESS G-J	FAINT K-M	VERY LIGHT N-R	LIGHT S-Z	
CLARITY (10x) GRADING SCALE	FL	IF	VVS	VS	SI	I
	FLAWLESS INTERNALLY FLAWLESS	VERY VERY SLIGHTLY INCLUDED	VERY SLIGHTLY INCLUDED	SLIGHTLY INCLUDED	INCLUDED	

PROPORTIONS

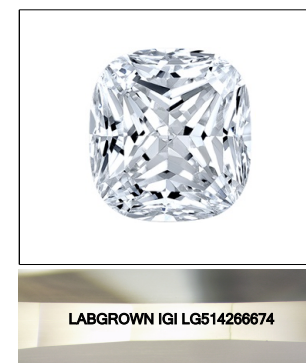


CLARITY CHARACTERISTICS



KEY TO SYMBOLS

Red symbols indicate internal characteristics.
Green symbols indicate external characteristics.



LASERSCRIBESM

Sample Image Used

January 31, 2022

IGI Report Number

LG514266674

Description

**LABORATORY GROWN
DIAMOND**

Shape and Cutting Style

**SQUARE CUSHION
BRILLIANT**

Measurements

7.60 X 7.55 X 5.05 MM

GRADING RESULTS

Carat Weight

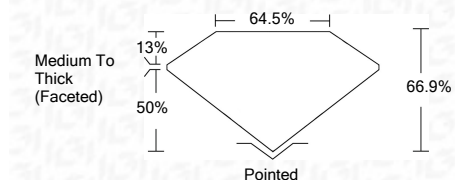
2.21 CARATS

Color Grade

I

Clarity Grade

SI 1



ADDITIONAL GRADING INFORMATION

Polish

EXCELLENT

Symmetry

EXCELLENT

Fluorescence

NONE

Inscription(s)

LABGROWN IGI LG514266674

Comments: This Laboratory Grown Diamond was created by Chemical Vapor Deposition (CVD) growth process and may include post-growth treatment.
Type IIa

January 31, 2022

IGI Report Number

LG514266674

Description

**LABORATORY GROWN
DIAMOND**

Shape and Cutting Style

SQUARE CUSHION BRILLIANT

Measurements

7.60 X 7.55 X 5.05 MM

GRADING RESULTS

Carat Weight

2.21 CARATS

Color Grade

I

Clarity Grade

SI 1

ADDITIONAL GRADING INFORMATION

Polish

EXCELLENT

Symmetry

EXCELLENT

Fluorescence

NONE

Inscription(s)

LABGROWN IGI LG514266674

Comments: This Laboratory Grown Diamond was created by Chemical Vapor Deposition (CVD) growth process and may include post-growth treatment.
Type IIa

January 31, 2022	IGI Report No. LG514266674	2.21 CARATS	I	Pointed
	SQUARE CUSHION BRILLIANT	66.9%	SI 1	EXCELLENT
	7.60 X 7.55 X 5.05 MM	64.5%	Medium To Thick (Faceted)	EXCELLENT
	Carat Weight			NONE
	Color Grade			LABGROWN IGI LG514266674
	Clarity Grade			
	Depth			
	Table			
	Girdle			
	Culet			
	Polish			
	Symmetry			
	Fluorescence			
	Inscription(s)			
	Comments:			

This Laboratory Grown Diamond was created by Chemical Vapor Deposition (CVD) growth process and may include post-growth treatment.
Type IIa

