

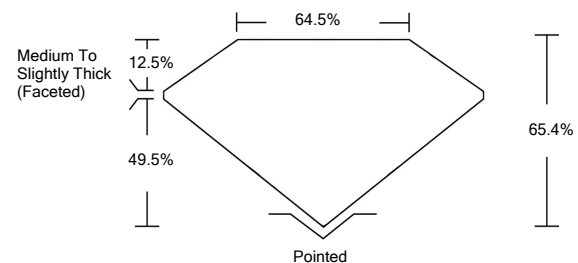


ELECTRONIC COPY

LABORATORY GROWN DIAMOND REPORT

LG512203056

PROPORTIONS



GRADING SCALES

COLOR GRADING SCALE	CL	NC	FT	VL	LT	
	COLORLESS D-F	NEAR COLORLESS G-J	FAINT K-M	VERY LIGHT N-R	LIGHT S-Z	
CLARITY (10x) GRADING SCALE	FL	IF	VVS	VS	SI	I
	FLAWLESS INTERNALLY FLAWLESS	VERY VERY SLIGHTLY INCLUDED	VERY SLIGHTLY INCLUDED	SLIGHTLY INCLUDED	INCLUDED	

January 17, 2022

IGI Report Number

LG512203056

Description

LABORATORY GROWN DIAMOND

Shape and Cutting Style

SQUARE CUSHION BRILLIANT

Measurements

8.10 X 7.88 X 5.15 MM

GRADING RESULTS

Carat Weight

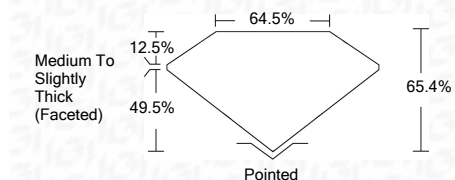
2.46 CARATS

Color Grade

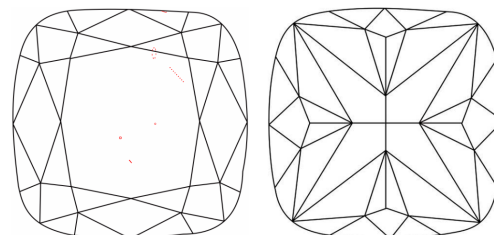
I

Clarity Grade

VS 2

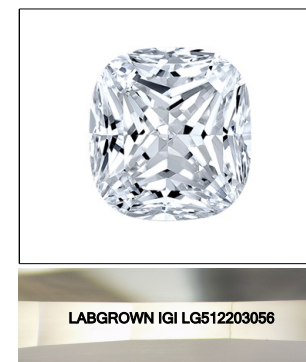


CLARITY CHARACTERISTICS



KEY TO SYMBOLS

Red symbols indicate internal characteristics.
Green symbols indicate external characteristics.



LASERSCRIBESM

Sample Images Used

ADDITIONAL GRADING INFORMATION

Polish

EXCELLENT

Symmetry

EXCELLENT

Fluorescence

NONE

Inscription(s)

LABGROWN IGI LG512203056

Comments: This Laboratory Grown Diamond was created by Chemical Vapor Deposition (CVD) growth process and may include post-growth treatment.
Type IIa

January 17, 2022

IGI Report Number

LG512203056

Description

LABORATORY GROWN DIAMOND

Shape and Cutting Style

SQUARE CUSHION BRILLIANT

Measurements

8.10 X 7.88 X 5.15 MM

GRADING RESULTS

Carat Weight

2.46 CARATS

Color Grade

I

Clarity Grade

VS 2

ADDITIONAL GRADING INFORMATION

Polish

EXCELLENT

Symmetry

EXCELLENT

Fluorescence

NONE

Inscription(s)

LABGROWN IGI LG512203056

Comments: This Laboratory Grown Diamond was created by Chemical Vapor Deposition (CVD) growth process and may include post-growth treatment.
Type IIa

January 17, 2022
IGI Report No. LG512203056
SQUARE CUSHION BRILLIANT
8.10 X 7.88 X 5.15 MM
Carat Weight **2.46 CARATS**
Color Grade **I**
Clarity Grade **VS 2**
Depth **65.4%**
Table **64.5%**
Girdle **Medium To Slightly Thick (Faceted)**
Culet **Pointed**
Polish **EXCELLENT**
Symmetry **EXCELLENT**
Fluorescence **NONE**
Inscription(s) **LABGROWN IGI LG512203056**
Comments: This Laboratory Grown Diamond was created by Chemical Vapor Deposition (CVD) growth process and may include post-growth treatment.
Type IIa

