



**INTERNATIONAL
GEMOLOGICAL
INSTITUTE**

**ELECTRONIC COPY LABORATORY GROWN
DIAMOND REPORT**

**IGI LABORATORY GROWN
DIAMOND ID REPORT**

January 11, 2022
IGI Report Number **LG510192565**

LABORATORY GROWN DIAMOND REPORT

LG510192565

PEAR BRILLIANT
8.17 X 5.11 X 3.26 MM
Carat Weight 0.81 CARAT
Color Grade E
Clarity Grade VS 1
Polish EXCELLENT
Symmetry EXCELLENT
Fluorescence NONE
Inscription(s) LABGROWN IGI
LG510192565

IGI LABORATORY GROWN DIAMOND IDENTIFICATION REPORT

January 11, 2022
IGI Report Number LG510192565
Description LABORATORY GROWN DIAMOND
Shape and Cutting Style PEAR BRILLIANT
Measurements 8.17 X 5.11 X 3.26 MM

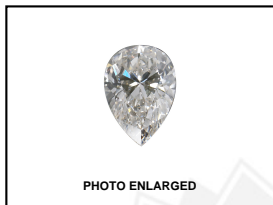


PHOTO ENLARGED

Comments: This Laboratory Grown Diamond was created by Chemical Vapor Deposition (CVD) growth process and may include post-growth treatment.
Type IIa

GRADING RESULTS

Carat Weight 0.81 CARAT
Color Grade E
Clarity Grade VS 1



LABGROWN IGI LG510192565

LASERSCRIBESM

ADDITIONAL GRADING INFORMATION

Polish EXCELLENT
Symmetry EXCELLENT
Fluorescence NONE
Inscription(s) LABGROWN IGI LG510192565



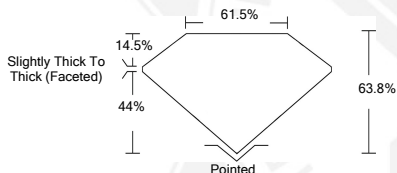
**IGI LABORATORY GROWN
DIAMOND ID REPORT**

January 11, 2022
IGI Report Number **LG510192565**

PEAR BRILLIANT
8.17 X 5.11 X 3.26 MM
Carat Weight 0.81 CARAT
Color Grade E
Clarity Grade VS 1
Polish EXCELLENT
Symmetry EXCELLENT
Fluorescence NONE
Inscription(s) LABGROWN IGI
LG510192565

Comments: This Laboratory Grown Diamond was created by Chemical Vapor Deposition (CVD) growth process and may include post-growth treatment.
Type IIa

Comments: This Laboratory Grown Diamond was created by Chemical Vapor Deposition (CVD) growth process and may include post-growth treatment.
Type IIa



THIS DOCUMENT WAS PRODUCED WITH THE FOLLOWING SECURITY MEASURES: SPECIAL DOCUMENT PAPER, INK SCREENS, WATERMARK, BACKGROUND DESIGN, HOLOGRAM AND OTHER SECURITY FEATURES NOT LISTED AND DO EXCEED DOCUMENT SECURITY INDUSTRY GUIDELINES.

For Terms & Conditions and to verify this report, please visit www.igi.org