



**INTERNATIONAL
GEMOLOGICAL
INSTITUTE**

LABORATORY GROWN DIAMOND REPORT

IGI LABORATORY GROWN DIAMOND IDENTIFICATION REPORT

December 31, 2021
 IGI Report Number LG510184891
 Description LABORATORY GROWN DIAMOND
 Shape and Cutting Style PEAR BRILLIANT
 Measurements 8.03 X 5.01 X 3.12 MM

GRADING RESULTS

Carat Weight 0.73 CARAT
 Color Grade F
 Clarity Grade VS 1

ADDITIONAL GRADING INFORMATION

Polish EXCELLENT
 Symmetry EXCELLENT
 Fluorescence NONE
 Inscription(s) LABGROWN IGI LG510184891

Comments: This Laboratory Grown Diamond was created by Chemical Vapor Deposition (CVD) growth process and may include post-growth treatment. Type IIa

ELECTRONIC COPY LABORATORY GROWN
DIAMOND REPORT

LG510184891

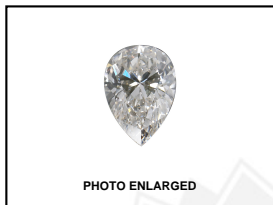
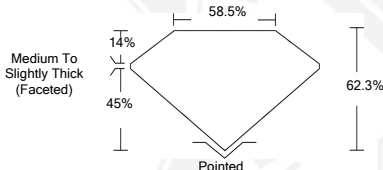


PHOTO ENLARGED



LABGROWN IGI LG510184891

LASERSCRIBESM



**IGI LABORATORY GROWN
DIAMOND ID REPORT**

December 31, 2021
 IGI Report Number **LG510184891**
PEAR BRILLIANT
8.03 X 5.01 X 3.12 MM
 Carat Weight 0.73 CARAT
 Color Grade F
 Clarity Grade VS 1
 Polish EXCELLENT
 Symmetry EXCELLENT
 Fluorescence NONE
 Inscription(s) LABGROWN IGI
 LG510184891

Comments: This Laboratory Grown Diamond was created by Chemical Vapor Deposition (CVD) growth process and may include post-growth treatment. Type IIa

**IGI LABORATORY GROWN
DIAMOND ID REPORT**

December 31, 2021
 IGI Report Number **LG510184891**
PEAR BRILLIANT
8.03 X 5.01 X 3.12 MM
 Carat Weight 0.73 CARAT
 Color Grade F
 Clarity Grade VS 1
 Polish EXCELLENT
 Symmetry EXCELLENT
 Fluorescence NONE
 Inscription(s) LABGROWN IGI
 LG510184891

Comments: This Laboratory Grown Diamond was created by Chemical Vapor Deposition (CVD) growth process and may include post-growth treatment. Type IIa

THIS DOCUMENT WAS PRODUCED WITH THE FOLLOWING SECURITY MEASURES: SPECIAL DOCUMENT PAPER, INK SCREENS, WATERMARK, BACKGROUND DESIGN, HOLOGRAM AND OTHER SECURITY FEATURES NOT LISTED AND DO EXCEED DOCUMENT SECURITY INDUSTRY GUIDELINES.