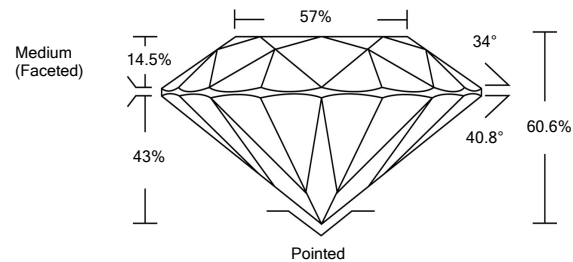




LG510174575

LABORATORY GROWN DIAMOND REPORT

PROPORTIONS

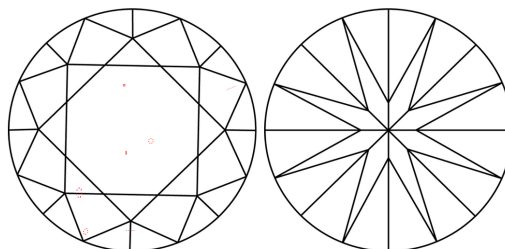


GRADING SCALES

Table with 5 columns: COLOR GRADING SCALE (CL, NC, FT, VLT, LT), CLARITY (10x) GRADING SCALE (FL, IF, VVS, VS, SI, I).

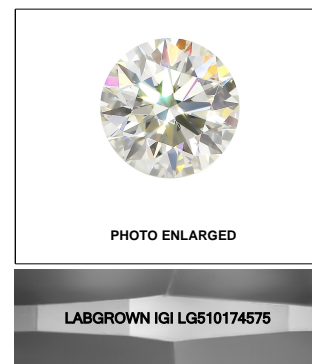
The laboratory grown diamond described in this Report (Report) has been graded, tested, analyzed, examined and/or inscribed by International Gemological Institute (IGI). A laboratory grown diamond is one that has essentially the same chemical, physical and optical properties as a mined diamond...

CLARITY CHARACTERISTICS

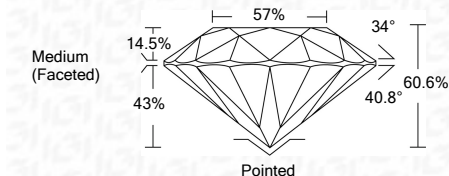


KEY TO SYMBOLS

Red symbols indicate internal characteristics. Green symbols indicate external characteristics.



January 7, 2022
IGI Report Number: LG510174575
Description: LABORATORY GROWN DIAMOND
Shape and Cutting Style: ROUND BRILLIANT
Measurements: 11.59 - 11.65 X 7.04 MM
Carat Weight: 5.77 CARATS
Color Grade: F
Clarity Grade: VS 1
Cut Grade: IDEAL



ADDITIONAL GRADING INFORMATION
Polish: EXCELLENT
Symmetry: EXCELLENT
Fluorescence: NONE
Inscription(s): LABGROWN IGI LG510174575

Comments: This Laboratory Grown Diamond was created by Chemical Vapor Deposition (CVD) growth process and may include post-growth treatment. Type IIa

January 7, 2022
IGI Report Number: LG510174575
Description: LABORATORY GROWN DIAMOND
Shape and Cutting Style: ROUND BRILLIANT
Measurements: 11.59 - 11.65 X 7.04 MM

GRADING RESULTS
Carat Weight: 5.77 CARATS
Color Grade: F
Clarity Grade: VS 1
Cut Grade: IDEAL

ADDITIONAL GRADING INFORMATION
Polish: EXCELLENT
Symmetry: EXCELLENT
Fluorescence: NONE
Inscription(s): LABGROWN IGI LG510174575

Comments: This Laboratory Grown Diamond was created by Chemical Vapor Deposition (CVD) growth process and may include post-growth treatment. Type IIa



IGI

January 7, 2022
IGI Report No. LG510174575
ROUND BRILLIANT
11.59 - 11.65 X 7.04 MM
Carat Weight: 5.77 CARATS
Color Grade: F
Clarity Grade: VS 1
Depth: 60.6%
Table: 57%
Girdle: Medium (Faceted)
Culet: Pointed
Polish: EXCELLENT
Symmetry: EXCELLENT
Fluorescence: NONE
Inscriptions(s): LABGROWN IGI LG510174575
Comments: This Laboratory Grown Diamond was created by Chemical Vapor Deposition (CVD) growth process and may include post-growth treatment. Type IIa