



**INTERNATIONAL
GEMOLOGICAL
INSTITUTE**

**ELECTRONIC COPY LABORATORY GROWN
DIAMOND REPORT**

LG500165029

**IGI LABORATORY GROWN
DIAMOND ID REPORT**

11/17/2021
IGI Report Number **LG500165029**
PEAR BRILLIANT
8.08 X 5.07 X 3.09 MM
Carat Weight 0.71 CARAT
Color Grade E
Clarity Grade SI 1
Polish EXCELLENT
Symmetry EXCELLENT
Fluorescence NONE
Inscription(s) LABGROWN IGI
LG500165029

Comments: This Laboratory Grown Diamond was created by Chemical Vapor Deposition (CVD) growth process and may include post-growth treatment.
Type IIa

**IGI LABORATORY GROWN
DIAMOND ID REPORT**

11/17/2021
IGI Report Number **LG500165029**
PEAR BRILLIANT
8.08 X 5.07 X 3.09 MM
Carat Weight 0.71 CARAT
Color Grade E
Clarity Grade SI 1
Polish EXCELLENT
Symmetry EXCELLENT
Fluorescence NONE
Inscription(s) LABGROWN IGI
LG500165029

Comments: This Laboratory Grown Diamond was created by Chemical Vapor Deposition (CVD) growth process and may include post-growth treatment.
Type IIa

LABORATORY GROWN DIAMOND REPORT

IGI LABORATORY GROWN DIAMOND IDENTIFICATION REPORT

11/17/2021
IGI Report Number **LG500165029**
Shape and Cutting Style **PEAR BRILLIANT**
Measurements **8.08 X 5.07 X 3.09 MM**

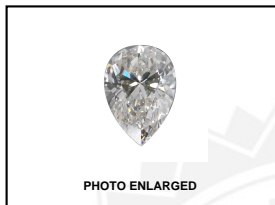
GRADING RESULTS

Carat Weight **0.71 CARAT**
Color Grade **E**
Clarity Grade **SI 1**

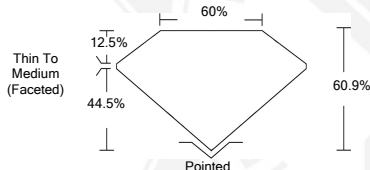
ADDITIONAL GRADING INFORMATION

Polish **EXCELLENT**
Symmetry **EXCELLENT**
Fluorescence **NONE**
Inscription(s) **LABGROWN IGI LG500165029**

Comments: This Laboratory Grown Diamond was created by Chemical Vapor Deposition (CVD) growth process and may include post-growth treatment.
Type IIa



LASERSCRIBESM



This Laboratory Grown Diamond (LGD) described in this Report has been analyzed, graded and Laserscribed® by International Gemological Institute (IGI). A LGD has essentially the chemical, physical and optical properties as a mined diamond, with the exception of being man-made (a manufactured product). LGDs are typically produced by CVD (chemical vapor deposition) or by HPHT (high pressure high temperature) growth processes and may include post growth modifications to change the color. IGI utilizes the most advanced techniques and equipment currently available including, binocular microscopes, diamond color masters, non-contact-optical measuring device, a wide range analytical techniques including FTIR, UV-VIS-NIR, raman spectroscopy, and fluorescence analysis at various excitation wavelengths. This Report includes advanced security features. This Report is neither a guarantee, valuation nor appraisal and by making the report IGI does not agree to purchase or replace the article.

INTERNATIONAL GEMOLOGICAL INSTITUTE, INC

THIS DOCUMENT WAS PRODUCED WITH THE FOLLOWING SECURITY MEASURES: SPECIAL DOCUMENT PAPER, INK SCREENS, WATERMARK, BACKGROUND DESIGN, HOLOGRAM AND OTHER SECURITY FEATURES NOT LISTED AND DO EXCEED DOCUMENT SECURITY INDUSTRY GUIDELINES.

For Terms & Conditions and to verify this report, please visit www.igi.org