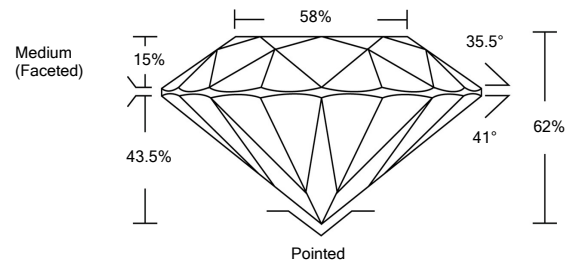




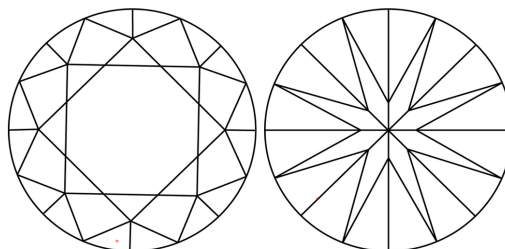
LABORATORY GROWN DIAMOND REPORT

LG492135366

PROPORTIONS



CLARITY CHARACTERISTICS



KEY TO SYMBOLS

Red symbols indicate internal characteristics.
Green symbols indicate external characteristics.

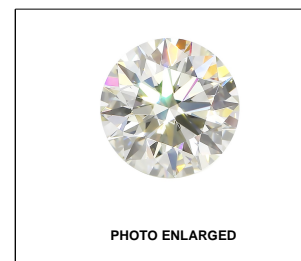
GRADING SCALES

COLOR GRADING SCALE	CL	NC	FT	VL	LT	
	COLORLESS D-F	NEAR COLORLESS G-J	FAINT K-M	VERY LIGHT N-R	LIGHT S-Z	
CLARITY (10x) GRADING SCALE	FL	IF	VVS	VS	SI	I
	FLAWLESS INTERNALLY FLAWLESS	VERY VERY SLIGHTLY INCLUDED	VERY SLIGHTLY INCLUDED	SLIGHTLY INCLUDED	INCLUDED	

The laboratory grown diamond described in this Report (Report) has been graded, tested, analyzed, examined and/or inscribed by International Gemological Institute (IGI). A laboratory grown diamond is one that has essentially the same chemical, physical and optical properties as a mined diamond, with the exception of being grown by man (a manufactured product). IGI employs and utilizes those techniques and equipment currently available to IGI, including, without limitation, 10X magnification, corrected triplet loupe, binocular microscope, master color comparison stones, non-contact-optical measuring device, Diamond Sure™, Diamond View™, Spectrophotometer and such other instruments and/or processes as deemed appropriate by IGI. This Report includes advanced security features. A duly accredited gemologist or jeweler can advise you with respect to the importance of and interrelationship between cut, color, clarity and carat weight.

THIS REPORT IS NEITHER A GUARANTEE, VALUATION, NOR APPRAISAL OF THE GEMSTONE DESCRIBED HEREIN. PLEASE REVIEW THE LIMITATIONS AND RESTRICTIONS SET FORTH ONLINE. FOR ADDITIONAL INFORMATION, IMPORTANT LIMITATIONS AND DISCLAIMERS, PLEASE GO TO WWW.IGI.ORG OR CALL 1-888-BUY-IGIS.

© INTERNATIONAL GEMOLOGICAL INSTITUTE, INC.



LABGROWN IGI LG492135366

LASERSCRIBESM

September 6, 2021

IGI Report Number

LG492135366

Description

LABORATORY GROWN
DIAMOND

Shape and Cutting Style

ROUND BRILLIANT

Measurements

6.41 - 6.45 X 3.99 MM

GRADING RESULTS

Carat Weight

1.01 CARAT

Color Grade

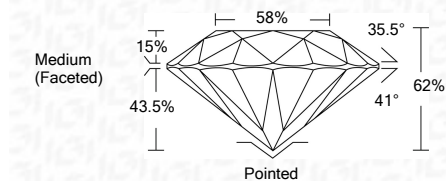
D

Clarity Grade

VVS 2

Cut Grade

IDEAL



ADDITIONAL GRADING INFORMATION

Polish

EXCELLENT

Symmetry

EXCELLENT

Fluorescence

NONE

Inscription(s)

LABGROWN IGI LG492135366

Comments: As Grown - No indication of post-growth treatment.
This Laboratory Grown Diamond was created by High Pressure High Temperature (HPHT) growth process.
Type II

September 6, 2021

IGI Report Number

LG492135366

Description

LABORATORY GROWN
DIAMOND

Shape and Cutting Style

ROUND BRILLIANT

Measurements

6.41 - 6.45 X 3.99 MM

GRADING RESULTS

Carat Weight

1.01 CARAT

Color Grade

D

Clarity Grade

VVS 2

Cut Grade

IDEAL

ADDITIONAL GRADING INFORMATION

Polish

EXCELLENT

Symmetry

EXCELLENT

Fluorescence

NONE

Inscription(s)

LABGROWN IGI LG492135366

Comments: As Grown - No indication of post-growth treatment.
This Laboratory Grown Diamond was created by High Pressure High Temperature (HPHT) growth process.
Type II



IGI

September 6, 2021	1.01 CARAT	D	Pointed
IGI Report No. LG492135366	VVS 2	IDEAL	EXCELLENT
ROUND BRILLIANT	6.41 - 6.45 X 3.99 MM	62%	EXCELLENT
Carat Weight	Color Grade	58%	EXCELLENT
Clarity Grade	Cut Grade	Medium (Faceted)	NONE
Depth	Table	LABGROWN IGI LG492135366	NONE
Grade	Grille	Inscription(s)	LABGROWN IGI LG492135366
Culet	Polish	Comments:	As Grown - No indication of post-growth treatment.
Symmetry	Symmetry		This Laboratory Grown Diamond was created by High Pressure High Temperature (HPHT) growth process.
Fluorescence	Fluorescence		Type II
Inscription(s)	Inscription(s)		