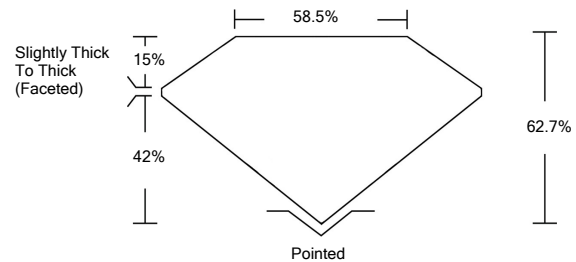




LG490194688

LABORATORY GROWN DIAMOND REPORT

PROPORTIONS

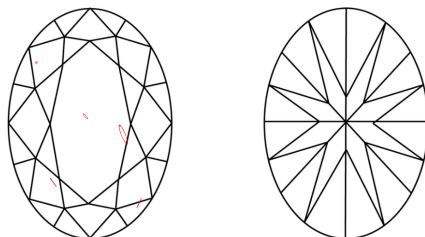


GRADING SCALES

Table with 5 columns for Color Grading Scale (CL, NC, FT, VLT, LT) and Clarity (10x) Grading Scale (FL, IF, VVS, VS, SI, I).

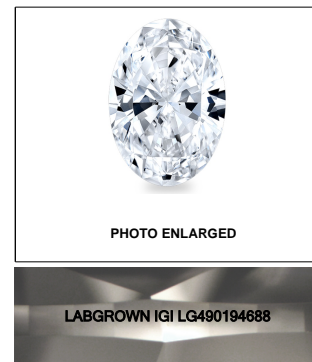
The laboratory grown diamond described in this Report (Report) has been graded, tested, analyzed, examined and/or inscribed by International Gemological Institute (IGI). A laboratory grown diamond is one that has essentially the same chemical, physical and optical properties as a mined diamond...

CLARITY CHARACTERISTICS

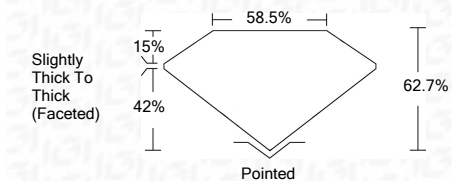


KEY TO SYMBOLS

Red symbols indicate internal characteristics. Green symbols indicate external characteristics.



08/27/2021 IGI Report Number LG490194688 Shape and Cutting Style OVAL BRILLIANT Measurements 9.02 x 6.40 x 4.01 mm GRADING RESULTS Carat Weight 1.50 CARAT Color Grade D Clarity Grade SI 1



ADDITIONAL GRADING INFORMATION

Polish EXCELLENT Symmetry EXCELLENT Fluorescence NONE Inscription(s) LABGROWN IGI LG490194688

Comments: As Grown - No indication of post-growth treatment. This Laboratory Grown Diamond was created by High Pressure High Temperature (HPHT) growth process. Type II



08/27/2021 IGI Report No. LG490194688 OVAL BRILLIANT 9.02 x 6.40 x 4.01 mm 1.50 CARAT D SI 1 62.7% 58.5% Slightly Thick To Thick (Faceted) Pointed EXCELLENT EXCELLENT NONE LABGROWN IGI LG490194688

As Grown - No indication of post-growth treatment. This Laboratory Grown Diamond was created by High Pressure High Temperature (HPHT) growth process. Type II

