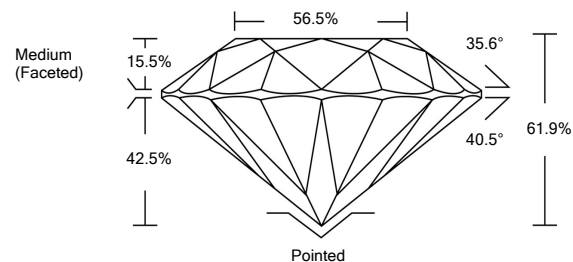




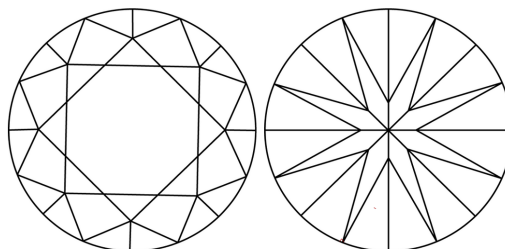
LG488156948

**LABORATORY GROWN DIAMOND REPORT**

**PROPORTIONS**



**CLARITY CHARACTERISTICS**



**KEY TO SYMBOLS**

Red symbols indicate internal characteristics.  
Green symbols indicate external characteristics.

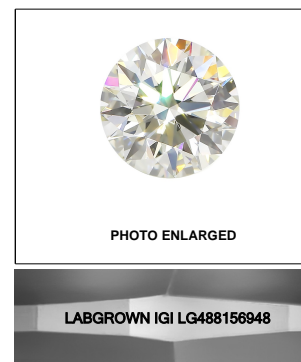
**GRADING SCALES**

COLOR GRADING SCALE	CL	NC	FT	VL	LT	
COLORLESS D-F		NEAR COLORLESS G-J	FAINT K-M	VERY LIGHT N-R	LIGHT S-Z	
CLARITY (10x) GRADING SCALE	FL	IF	VVS	VS	SI	I
FLAWLESS INTERNALLY FLAWLESS		VERY VERY SLIGHTLY INCLUDED	VERY SLIGHTLY INCLUDED	SLIGHTLY INCLUDED		INCLUDED

The laboratory grown diamond described in this Report (Report) has been graded, tested, analyzed, examined and/or inscribed by International Gemological Institute (IGI). A laboratory grown diamond is one that has essentially the same chemical, physical and optical properties as a mined diamond, with the exception of being grown by man (a manufactured product). IGI employs and utilizes those techniques and equipment currently available to IGI, including, without limitation, 10X magnification, corrected triplet loupe, binocular microscope, master color comparison stones, non-contact-optical measuring device, Diamond Sure™, Diamond View™, Spectrophotometer and such other instruments and/or processes as deemed appropriate by IGI. This Report includes advanced security features. A duly accredited gemologist or jeweler can advise you with respect to the importance of and interrelationship between cut, color, clarity and carat weight.

**THIS REPORT IS NEITHER A GUARANTEE, VALUATION, NOR APPRAISAL OF THE GEMSTONE DESCRIBED HEREIN. PLEASE REVIEW THE LIMITATIONS AND RESTRICTIONS SET FORTH ONLINE. FOR ADDITIONAL INFORMATION, IMPORTANT LIMITATIONS AND DISCLAIMERS, PLEASE GO TO WWW.IGI.ORG OR CALL 1-888-BUY-IGIS.**

© INTERNATIONAL GEMOLOGICAL INSTITUTE, INC.



**LASERSCRIBE<sup>SM</sup>**

08/18/2021

IGI Report Number **LG488156948**

Shape and Cutting Style **ROUND BRILLIANT**

Measurements **6.67 - 6.71 x 4.15 mm**

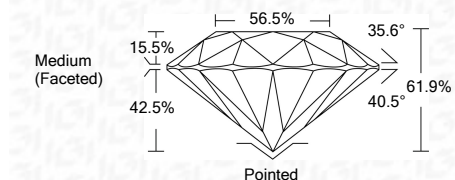
**GRADING RESULTS**

Carat Weight **1.15 CARAT**

Color Grade **I**

Clarity Grade **VVS 1**

Cut Grade **IDEAL**



**ADDITIONAL GRADING INFORMATION**

Polish **EXCELLENT**

Symmetry **EXCELLENT**

Fluorescence **NONE**

Inscription(s) **LABGROWN IGI LG488156948**

Comments: Faint Blue  
As Grown - No indication of post-growth treatment.  
This Laboratory Grown Diamond was created by High Pressure High Temperature (HPHT) growth process.  
Type II



**IGI**

08/18/2021	IGI Report No. LG488156948	1.15 CARAT	I	Pointed	EXCELLENT	EXCELLENT	NONE	LABGROWN IGI LG488156948	Comments: Faint Blue - No indication of post-growth treatment. As Grown - No indication of post-growth treatment. This Laboratory Grown Diamond was created by High Pressure High Temperature (HPHT) growth process. Type II
	ROUND BRILLIANT	6.67 - 6.71 x 4.15 mm	VVS 1	IDEAL	EXCELLENT	EXCELLENT	NONE	LABGROWN IGI LG488156948	
	Carat Weight	1.15 CARAT	Color Grade	I	Depth	61.9%	Fluorescence	NONE	
	Cut Grade	IDEAL	Girdle	56.5%	Table	15.5%	Inscription(s)	LABGROWN IGI LG488156948	
	Clarity Grade	VVS 1	Culet	Pointed	Polish	EXCELLENT			
	Depth	61.9%	Symmetry	EXCELLENT					
	Table	15.5%	Fluorescence	NONE					
	Girdle	56.5%	Inscription(s)	LABGROWN IGI LG488156948					

