



LG480153351

LABORATORY GROWN DIAMOND REPORT

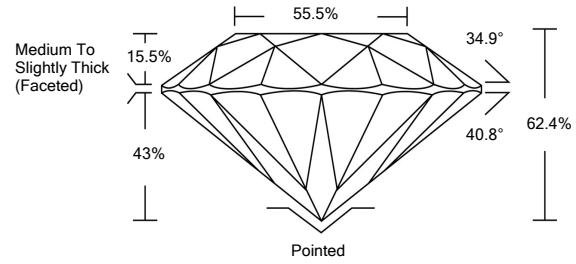
06/18/2021
IGI Report Number LG480153351
Shape and Cutting Style ROUND BRILLIANT
Measurements 8.33 - 8.40 x 5.22 mm

GRADING RESULTS
Carat Weight 2.25 CARATS
Color Grade H
Clarity Grade SI 2
Cut Grade IDEAL

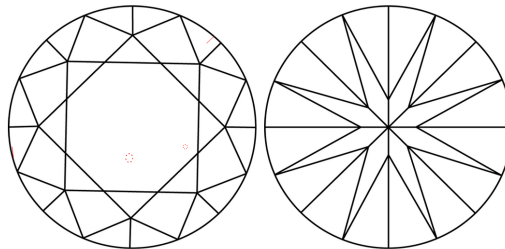
ADDITIONAL GRADING INFORMATION
Polish EXCELLENT
Symmetry EXCELLENT
Fluorescence NONE
Inscription(s) LABGROWN IGI LG480153351

Comments: This Laboratory Grown Diamond was created by Chemical Vapor Deposition (CVD) growth process and may include post-growth treatment. Type IIa

PROPORTIONS



CLARITY CHARACTERISTICS



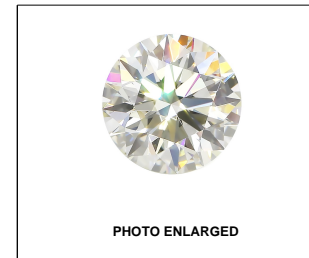
KEY TO SYMBOLS

Red symbols indicate internal characteristics. Green symbols indicate external characteristics.

GRADING SCALES

Table with 5 columns for Color Grading Scale (CL to LT) and Clarity (10x) Grading Scale (FL to I).

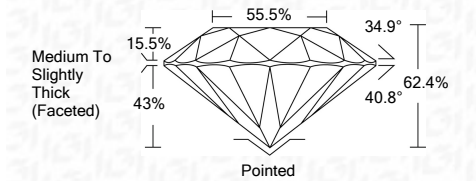
The laboratory grown diamond described in this Report (Report) has been graded, tested, analyzed, examined and/or inscribed by International Gemological Institute (IGI). A laboratory grown diamond is one that has essentially the same chemical, physical and optical properties as a mined diamond...



LABGROWN IGI LG480153351

LASERSCRIBE SM

06/18/2021
IGI Report Number LG480153351
Shape and Cutting Style ROUND BRILLIANT
Measurements 8.33 - 8.40 x 5.22 mm
GRADING RESULTS
Carat Weight 2.25 CARATS
Color Grade H
Clarity Grade SI 2
Cut Grade IDEAL



ADDITIONAL GRADING INFORMATION
Polish EXCELLENT
Symmetry EXCELLENT
Fluorescence NONE
Inscription(s) LABGROWN IGI LG480153351

Comments: This Laboratory Grown Diamond was created by Chemical Vapor Deposition (CVD) growth process and may include post-growth treatment. Type IIa



IGI

06/18/2021
IGI Report No. LG480153351
ROUND BRILLIANT
8.33 - 8.40 x 5.22 mm
Carat Weight 2.25 CARATS
Color Grade H
Clarity Grade SI 2
Cut Grade IDEAL
Depth 62.4%
Table 55.5%
Girdle Medium To Slightly Thick (Faceted)
Culet Pointed
Polish EXCELLENT
Symmetry EXCELLENT
Fluorescence NONE
Inscription(s) LABGROWN IGI LG480153351
Comments: This Laboratory Grown Diamond was created by Chemical Vapor Deposition (CVD) growth process and may include post-growth treatment. Type IIa